

CARLISLE

SUMMER 2024 LOOKBOOK

TABLE OF CONTENTS

ACCESSORIES			
1-SC-3106	MASTERWORK	\$225	18
5-SC-3161	ROYALE	\$225	27
DRESSES			
1-DR-3176	CARBONADO	\$395	15
1-DR-2565	CLEO	\$550	14
1-DR-3077	ESMERALDA	\$425	19
5-DR-3091	GARDEN PARTY	\$695	30
1-DR-3019	HENNA	\$395	6
5-DR-2513	JARDINIERE	\$595	31
1-DR-3064	PENELOPE	\$550	14
5-DR-3092	PICASSO	\$450	26
1-DR-2923	PRINTEMPS	\$675	19
1-DR-3056	RAMBUTAN	\$495	14
1-DR-2999	SOLARIUM	\$695	19
1-DR-3109	TANAGER	\$675	10
5-DR-3083	TEMPRANILLO	\$495	27
JACKETS			
1-JK-3125	ALBA	\$795	10
1-JK-3002	ALCAZAR	\$495	18
1-JK-3025	EL DORADO	\$725	6
5-JK-3070	GOYA	\$650	26
5-OW-3133	GREENWOOD	\$525	31
5-JK-3076	HYACINTH	\$725	30
1-JK-3157	IMMACULATE	\$995	15
5-JK-3132	LETIZIA	\$1,095	27
1-JK-2994	MYSTIC AURA	\$650	22
1-JK-3120	PATIO	\$795	7
5-JK-3184	PRADO	\$550	30
1-JK-3055	RAMBUTAN	\$625	14
1-JK-2982	TANAGER	\$675	10
5-JK-3084	TEMPRANILLO	\$550	27

KNITS			
1-KN-3007	ACACIA-CARDI	\$325	18
1-KN-3008	ACACIA-SHELL	\$275	18
1-KN-3177	ANGLED-CARDI	\$525	14
1-KN-3158	ANGLED-SHELL	\$350	14
1-KN-2997	AROMATIC-CARDI	\$495	19
1-KN-2998	AROMATIC-SHELL	\$350	19
5-KN-3086	BALANCE-BLK	\$325	27
5-KN-3178	BALANCE-WHT	\$325	31
1-KN-3126	BELLFLOWER-CARDI	\$375	11
1-KN-3067	BELLFLOWER-SHELL	\$295	11
1-KN-3063	BLUSHING-CARDI	\$425	10
1-KN-3062	BLUSHING-SHELL	\$295	10
5-KN-3110	CARAVEL	\$350	27
1-KN-3026	CUMIN	\$325	6
1-KN-2558	DAY FOR NIGHT-CARDI	\$375	15
1-KN-2559	DAY FOR NIGHT-SHELL	\$275	15
5-KN-3119	GOLDEN-CARDI	\$525	27
5-KN-3095	GOLDEN-SHELL	\$325	27
1-KN-3018	MARBELLA	\$375	7
5-KN-2512	PAINTED FERN	\$295	31
5-KN-2482	PARADISE	\$495	31
1-KN-3326	PARAGON-BLU	\$295	11
1-KN-3327	PARAGON-BRN	\$295	7
1-KN-3329	PARAGON-GRN	\$295	18
1-KN-3328	PARAGON-PNK	\$295	14
1-KN-3330	PARAGON-PUR	\$295	22
5-KN-3130	PARASOL	\$475	26
5-KN-3131	PARASOL	\$375	26
5-KN-3072	SUNDOWN	\$375	30
1-KN-3122	TURRON-CARDI	\$495	7
1-KN-3123	TURRON-SHELL	\$350	7
5-KN-3134	VERDURE	\$450	31
5-KN-3096	VIBRATO	\$425	26

PANTS			
1-PT-3105	ALCAZAR	\$395	18
5-PT-3136	CALATRAVA	\$350	7
1-PT-3024	EL DORADO	\$450	6
5-PT-2993	FINESSE-BLK	\$425	27
5-PT-3239	FINESSE-WHT	\$425	31
1-PT-3162	FLAMENCO	\$395	10
5-PT-3128	HYACINTH	\$595	30
5-PT-3135	INSPIRATION	\$395	26
1-PT-3269	JAUNT-BLK	\$325	15
1-PT-2618	JAUNT-WHT	\$325	11
1-PT-3006	MYSTIC AURA	\$450	22
5-PT-3074	PARADE	\$450	30
1-PT-3013	PATIO	\$375	7
1-PT-3003	SWIFT-GRN	\$325	18
1-PT-3094	TANAGER	\$425	10
5-PT-3097	VIBRATO	\$395	26

SKIRTS			
1-SK-2988	EL DORADO	\$575	6
5-SK-3163	GOYA	\$450	26
5-SK-3088	IBERIA	\$425	31
1-SK-3066	MENORCA	\$450	11
1-SK-2984	TANAGER	\$395	10
5-SK-3071	TROPICAL	\$450	30
1-SK-3010	VERANDA	\$550	19
TOPS			
1-TP-3104	ALDER	\$495	18
5-TP-3164	BARBIANA	\$295	30
1-TP-3022	BEAMING	\$425	7
1-TP-4424	CITADEL	\$325	7
1-TP-3159	ECHO	\$450	19
1-TP-3068	FANDANGO	\$450	11
1-TP-2995	GWEN-LAV	\$295	22
1-TP-3268	HOLLYHOCK	\$395	14
1-TP-3005	IBIZA	\$425	11
1-TP-3065	MENORCA	\$475	11
5-TP-3085	PALISADE	\$475	26
5-TP-3127	PARADE	\$450	30
1-TP-3325	PARADIGM-BLK	\$195	15
1-TP-3323	PARADIGM-IVR	\$195	18
1-TP-3324	PARADIGM-NVY	\$195	11
1-TP-3322	PARADIGM-WHT	\$195	22
5-TP-2888	PETIT PALAIS	\$375	31
1-TP-3000	SOLARIUM	\$495	19
1-TP-3181	STREAM-GLD	\$275	6
1-TP-3170	STREAM-WHT	\$275	15
1-TP-3054	TABERNAS-GLD	\$395	6
1-TP-3160	TABERNAS-WHT	\$395	15
1-TP-3069	THALIA	\$315	10
1-TP-3009	VERANDA	\$395	19

ESSENTIALS & CLASSICS

5-TP-2259	EMMA-BLK	\$188	36
1-TP-780	GWEN-BLK	\$278	36
1-TP-161	GWEN-WHT	\$278	36
1-TP-885	TORY-BLK	\$95	36
1-TP-884	TORY-ND	\$95	36
1-TP-163	TORY-WHT	\$95	36
<hr/>			
5-PT-734	HORSESHOE	\$298	36
5-PT-852	NIKITA-BLK	\$348	37
1-PT-2389	NIKITA-CML	\$348	37
5-PT-769	NIKITA-MEL	\$348	37
5-PT-1244	NIKITA-NVY	\$348	37
5-PT-917	SASHA-IVR	\$328	37
5-PT-107	SOHO-BLK	\$298	36
5-PT-961	SOHO-NVY	\$298	36



CARLISLE
COLLECTION



1 HENNA

\$395

1-DR-3019

XS-XXL

SHIFT SHAPE

EASY FIT



Terracotta

Jersey knit dress with an open zig-zag pointelle pattern. Linked-on full-needle polo collar and placket. Self-start cuffs and hem. Knit-in pointelle waistband. Side slits. Adjustable slip dress: 28". Dress length: 41". Skirt length: 26".

A	B	C	D	E	F
S	M	L	M	S	L

62% Viscose, 38% Polyester Exclusive of Trims

4 EL DORADO

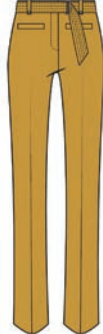
\$450

1-PT-3024

O-18

STRAIGHT LEG

CHRISTY CLASSIC FIT



Golden Spice

Full-length pants in Italian stretch linen twill. Applied waistband with belt loops. Fly-front. Self trapunto belt with shiny nickel double D-ring buckle. Front welt pockets. Back patch pockets with self facing and shaping darts. Unlined. Front rise: 10 1/4". Inseam: 32". Leg opening: 17 1/2".

A	B	C	D	E	F
8	10	2	2	4	6

66% Linen, 32% Viscose, 2% Elastane

7 EL DORADO

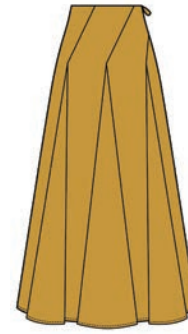
\$575

1-SK-2988

O-18

A-LINE SHAPE

CLASSIC FIT



Golden Spice

Italian stretch linen twill skirt with godets. Clean, no-waistband style with self facing and six angled seams that become triangular godets 6" below the waist. Hidden side zipper. Eight gores create a 148 1/2" sweep. Baby hem. Lined. Length: 26".

A	B	C	D	E	F
8	10	10	2	4	6

66% Linen, 32% Viscose, 2% Elastane

2 EL DORADO

\$725

1-JK-3025

O-18

CLASSIC FIT



Golden Spice

Italian stretch linen twill jacket. Notched collar with lapels. Bracelet sleeves. Shoulder pads. Golden spice buttons set with grosgrain ribbons. Removable epaulettes with loops. Side pockets with self facing. 75" trapunto self belt. Styling seams at front, back, and hem. Shoulder yoke. Nickel coin logo chain. Lined. Length: 26 1/2".

A	B	C	D	E	F
8	10	2	2	4	6

66% Linen, 32% Viscose, 2% Elastane

5 TABERNAS-GLD

\$395

1-TP-3054

O-18

CLASSIC FIT



Golden Spice

Blouse in cotton plain weave with eyelet embroidery. Solid golden spice Mandarin collar, placket, shoulder yoke, and pocket flaps. Trapunto shoulders and cuffs. Front and back shaping panels. Bracelet sleeves Shirred at caps and button cuffs. Gold mother of pearl buttons. Shirtail hem. Side slits. Unlined. Length: 27".

A	B	C	D	E	F
4	6	8	10	12	2

Self: 100% Cotton. Embroidery Combo: 100% Cotton

3 CUMIN

\$325

1-KN-3026

XL-XXL

SEMI FITTED



Golden Spice

Pullover silk-rich knit top in a textured link-links stitch with a jersey shoulder yoke. Rib-knit crew neck with tubular jersey link-on. Elbow sleeves. Mixed rib-start cuffs and hem. Fully fashioned. Unlined. Length: 21".

A	B	C	D	E	F
L	S	M	L	S	M

66% Cotton, 34% Silk

6 STREAM-GLD

\$275

1-TP-3181

O-18

CLASSIC FIT



Golden Spice

Bias-cut crêpe-back satin blouse reverses from a V-neck to a boat neck. French binding at neck and cutaway armholes. Lingerie loops. Clean-finished hem. Unlined. Length: 22".

A	B	C	D	E	F
8	10	4	2	8	6

100% Viscose



8 PATIO \$795 1-JK-3120 O-18 CLASSIC FIT



Aragon Twill jacket with exclusive embroidery at right lapel and hip, and at left shoulder: dots, circles, star circles, and diamond circles. V-neck with self facing. Dull nickel floral buttons at front and removable back belt. Bracelet sleeves. Shoulder pads. Side shaping panels. Bust darts. Side slits. Lined body. Length: 28 1/2".

Size chart for item 8: A B C D E F, 6 8 10 2 2 4. 78% Polyester, 22% Rayon

11 TURRON-CARDI \$495 1-KN-3122 XS-XXL CLASSIC FIT



Dusty Aragon Open-front, jersey knit silk-rich cardigan with rows of wavy and triangular links-links patterns and open drop-needle chevron details in front and back. Linked-on full-needle V-neck and placket. Rib-start cuffs and hem. Side slits. Fully fashioned. Unlined. Length: 26".

Size chart for item 11: A B C D E F, M S L XS M S. 70% Cotton, 30 Silk

14 BEAMING \$425 1-TP-3022 O-18 EASY FIT



Ivory, Golden Spice, Terracotta, Fern Green, Green Eyes, Honeydew, Campanula, Tanager Turquoise, Pink Yarrow, Aragon High-low blouse in stretch silk crêpe de chine. Front-placed print with pineapple, sun, moon, stars, diamonds and more. Shirt collar. White mother of pearl button placket. Shirred front shoulder seam. Two-ply back yoke and box pleat. Patch pockets. Forward side seams. Shirrtail. Unlined. Front length: 26 1/2". Back length: 27".

Size chart for item 14: A B C D E F, 6 2 4 6 8 10. 92% Silk, 8% Spandex

9 CITADEL \$325 1-TP-4424 O-18 CLASSIC FIT



Aragon, Golden Spice, Terracotta, Navy, White, Campanula, Camellia Bias-cut stretch silk crêpe de chine tank blouse in an intricate placed tile print. Open jewel neck and armholes with bias French binding. Lingerie loops. Self double-turn hem. Unlined. Length: 24".

Size chart for item 9: A B C D E F, 6 8 10 12 2 4. 95% Silk, 5% Spandex

12 TURRON-SHELL \$350 1-KN-3123 XS-XXL SEMI FITTED



Dusty Aragon Pullover silk-rich jersey knit shell with front rows of wavy and triangular links-links patterns, and open drop-needle chevron details. Linked-on full-needle V-neck, cutaway armholes, and hem. Angled front styling seams. Fully fashioned. Unlined. Length: 22 1/2".

Size chart for item 12: A B C D E F, M S L XS M S. 70% Cotton, 30 Silk

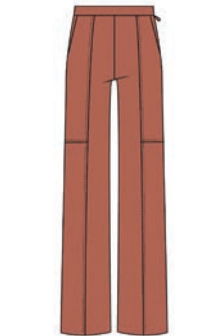
15 PARAGON-BRN \$295 1-KN-3327 XS-XXL SEMI FITTED



Carnelian Pullover jersey knit top in ultrasoft Suvin cotton, flame-tempered for extra smoothness and strength. Linked-on tubular jersey crew neck. Elbow-length sleeves. Rib-start cuffs and hem. Fully fashioned. Unlined. Length: 24".

Size chart for item 15: A B C D E F, S XS XL L M M. 100% Suvin Cotton. Exclusive of Trims

10 PATIO \$375 1-PT-3013 O-18 WIDE LEG ELLE EASY FIT



Aragon Full-length twill pants with front and back styling seams. Applied waistband with bias facing. Hidden side zipper. Front slash pockets with self facing. Back welt pockets. Unlined. Front rise: 11 1/4". Inseam: 34". Leg opening: 21".

Size chart for item 10: A B C D E F, 6 8 10 6 2 4. 78% Polyester, 22% Rayon

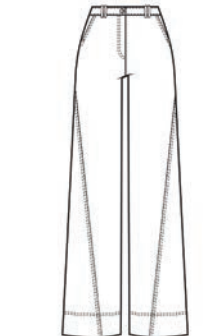
13 MARBELLA \$375 1-KN-3018 XS-XXL EASY FIT



Ivory, Golden Spice, Aragon Jersey knit cotton lace-up pullover with diamond pointelle 3/4 sleeves, front and back columns in minicable stitches, and contrast-color tipping in tubular jersey and links-links stitches. Linked-on full-needle V-neck with self cord and pointelle lace holes. Fully fashioned. Unlined. Length: 23".

Size chart for item 13: A B C D E F, XL S M XL S M. 86% Cotton, 14% Nylon

16 CALATRAVA \$350 5-PT-3136 O-18 EXTRA-WIDE LEG BROOKE CLASSIC FIT



White Full-length jeans in soft, garment-washed stretch cotton twill. Applied waistband with paired belt loops. Fly-front with tack button. Front slash and back patch pockets with rivets. Shiny nickel hardware. Angled styling seams from side seams to center front and back. Unlined. Front rise: 10 1/2". Inseam: 32". Leg opening: 24".

Size chart for item 16: A B C D E F, 12 2 4 6 8 10. 53% Cotton, 45% Lyocell, 2% Spandex



A



B

A
 1-DR-3019 HENNA \$395
 5-SC-3161 ROYALE \$225

B
 1-JK-3025 EL DORADO \$725
 5-KN-3131 PARASOL \$375
 5-PT-3135 INSPIRATION \$395

C
 1-JK-3025 EL DORADO \$725
 5-KN-3131 PARASOL \$375
 1-PT-3105 ALCAZAR \$395

D
 1-TP-3054 TABERNAS-GLD \$395
 1-SK-2988 EL DORADO \$575



C



D



E



F



G



H

E
 1-JK-3120 PATIO \$795
 1-TP-4424 CITADEL \$325
 1-PT-3013 PATIO \$375

F
 1-JK-3025 EL DORADO \$725
 1-TP-3022 BEAMING \$425
 5-PT-3136 CALATRAVA \$350

G
 1-KN-3018 MARBELLA \$375
 1-PT-3024 EL DORADO \$450

H
 1-KN-3122 TURRON-CARDI \$495
 1-KN-3123 TURRON-SHELL \$350
 5-PT-3136 CALATRAVA \$350
 5-SC-3161 ROYALE \$225



17 Tanager

\$675

1-JK-2982

0-18

CLASSIC FIT

Campanula



Jacket in Italian stretch linen twill with contrast topstitching. Notched collar with lapels. Four-hole nickel buttons with campanula enamel. Sleeves with curved slit. Back loop and tie lace-up. Flap pockets. Inside welts. Front and back princess seams. Nickel coin logo chain. Shoulder pads. Stretch satin chiffon lined. Length: 26 1/2".

A	B	C	D	E	F
6	8	10	8	2	4

66% Linen, 32% Viscose, 2% Elastane

20 ALBA

\$795

1-JK-3125

0-18

EASY FIT

Ivory, Campanula, Pink Yarrow, Aqua



Italian placed jacquard swing jacket with 3/4" self fringe inset at lapel, placket, bottom band, and cuff edges. V-neck with back facing. Shiny nickel button front and flap bust pockets. Bracelet sleeves. Shoulder pads. Front and back princess seams. Shoulder yoke. On-seam welt pockets. Printed Italian crêpe piping inside. Lined. Length: 24 1/2".

A	B	C	D	E	F
2	4	6	8	10	10

41% Polyester, 39% Cotton, 13% Acrylic, 5% Other Fibers, 2% Polyamide, Exclusive Of Trim, Inside Piping Combo: 100% Viscose

23 BLUSHING-CARDI

\$425

1-KN-3063

XS-XXL

CLASSIC FIT

Pink Yarrow



Open-front knit cardigan in pointelle and modified Ottoman stitches. Linked-on tubular jersey V-neck and placket. 3/4 sleeves. Self-start pointelle cuffs and hem. Fully fashioned. Unlined. Length: 24 1/2".

A	B	C	D	E	F
L	M	XS	L	M	XS

66% Viscose, 34% Nylon

18 THALIA

\$315

1-TP-3069

XS-XXL

SEMI FITTED

Campanula



Pullover jersey knit tee shirt with crisscross draping detail in front that attaches to side seams. Crew neck and cap sleeves with self banding. Gathered cummerbund seamed into back panel with shirring. Double-needle coverstitch at hem. Cut and sew. Unlined. Length: 23 1/2".

A	B	C	D	E	F
M	L	S	M	L	S

95% Rayon, 5% Spandex

21 Tanager

\$675

1-DR-3109

0-18

CLASSIC FIT

A-LINE SHAPE

Campanula



Dress in Italian stretch linen twill with contrast topstitching. Boat neck. Hidden back zipper. Lingerie loops. Slash pockets with self facing. 72" two-ply self belt. Crochet belt loops. Bust darts. Back princess seams and waist darts. Stretch satin chiffon lined. Dress length: 44". Skirt length: 28".

A	B	C	D	E	F
6	8	10	12	2	4

66% Linen, 32% Viscose, 2% Elastane

24 BLUSHING-SHELL

\$295

1-KN-3062

XS-XXL

SEMI FITTED

Pink Yarrow



Jersey knit pullover shell. Linked-on Ottoman pointelle details with tubular jersey at open crew neck and armholes. Linked-on modified Ottoman pointelle hem. Fully fashioned. Unlined. Length: 23".

A	B	C	D	E	F
L	M	XS	L	M	XS

66% Viscose, 34% Nylon

19 Tanager

\$425

1-PT-3094

0-18

WIDE LEG

CHRISTY CLASSIC FIT

Campanula



Full-length pants in Italian stretch linen twill with contrast topstitching. Applied waistband with belt loops. Two-ply self tie belt. Fly-front. Front and back styling seams for shape. Front scoop pockets. Back welt pockets. Unlined. Front rise: 10 1/4". Inseam: 34". Leg opening: 22".

A	B	C	D	E	F
6	8	10	8	2	4

66% Linen, 32% Viscose, 2% Elastane

22 Tanager

\$395

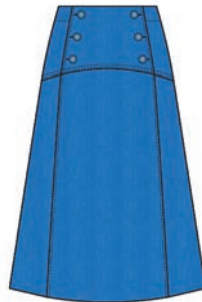
1-SK-2984

0-18

CLASSIC FIT

A-LINE SHAPE

Campanula



Skirt in Italian stretch linen twill with contrast topstitching. Clean no-waistband style sits 1" below the natural waist. Two-ply waist yokes curve up in front and down in back. Decorative four-hole nickel buttons with campanula enamel. Front and back panel seams. Hidden back zipper. Stretch satin chiffon lined. Length: 23".

A	B	C	D	E	F
6	8	10	8	2	4

66% Linen, 32% Viscose, 2% Elastane

25 FLAMENCO

\$395

1-PT-3162

0-18

STRAIGHT LEG

BROOKE CLASSIC FIT

Ivory, Blazing Orange, Camellia, Parfait Pink, Pink Yarrow, Cerise, Campanula, Imperial Blue, Green Ash, Green Eyes, Fern Green



Full-length jeans in stretch cotton twill feature a floral print that looks like an ikat weave. Applied waistband with belt loops. Fly-front with tack button. Five-pocket styling with rivets. Shiny nickel hardware. Back shaping yoke. Unlined. Front rise: 10 1/4". Inseam: 34". Leg opening: 14 3/4".

A	B	C	D	E	F
4	6	8	10	6	2

96% Cotton, 4% Spandex



26 PARAGON-BLU \$295
1-KN-3326 XS-XXL
SEMI FITTED

Campanula



Pullover jersey knit top in ultrasoft Suvin cotton, flame-tempered for extra smoothness and strength. Linked-on tubular jersey crew neck. Elbow-length sleeves. Rib-start cuffs and hem. Fully fashioned. Unlined. Length: 24".

A	B	C	D	E	F
XS	XL	L	M	S	S

100% Suvin Cotton. Exclusive of Trims

29 BELLFLOWER-CARDI \$375
1-KN-3126 XS-XXL
CLASSIC FIT

Campanula



Better Cotton Initiative tuck-stitch cardigan features a yoke with tuck, pointelle, and links-links stitches. Linked-on half-Milano polo collar, rib-knit placket, and side gussets. Campanula mother of pearl buttons. Bracelet sleeves. Fully fashioned. Unlined. Front length: 21 1/2". Back length: 22 1/4".

A	B	C	D	E	F
XL	L	S	M	XS	L

71% BCI Cotton, 29% Nylon

32 PARADIGM-NVY \$195
1-TP-3324 XS-XXL
FITTED

Navy



Fitted V-neck tee shirt in ultra-stretch nylon jersey. Self-banding at neck. Double-needle coverstitched short sleeves and hem. Cut and sew. Unlined. Length: 24 1/2".

A	B	C	D	E	F
L	S	M	L	XL	XS

87% Nylon, 13% Spandex

27 MENORCA \$475
1-TP-3065 0-18
EASY FIT

White, Campanula



Pullover tunic with rows of purl-embroidered geometric lace in five different guipure styles. Wide boat neck with bias binding. Flared elbow sleeves. Bust darts. Lingerie loops. 22" adjustable stretch satin chiffon cami. Length: 20".

A	B	C	D	E	F
6	2	4	6	8	10

100% Polyester. Cami: 97% Polyester, 3% Spandex

30 BELLFLOWER-SHELL \$295
1-KN-3067 XS-XXL
SEMI FITTED

Campanula



Better Cotton Initiative pullover racking stitch knit shell with a yoke in mixed tuck, pointelle, and links-links stitches. Linked-on rib-knit boat neck, cutaway armholes, and hem. Side slits. Unlined. Length: 22".

A	B	C	D	E	F
M	L	S	M	L	S

71% BCI Cotton, 29% Nylon

33 FANDANGO \$450
1-TP-3068 0-18
EASY FIT

White, Tanager Turquoise, Campanula, Pink Yarrow



Stretch silk crêpe de chine poet blouse in a palm tree and toucan print. Shirred peasant neck with encased elastic can be worn on or off shoulder. Two 21" cord tassel ties. Sleeves are bracelet in front and full in back, with shirring and encased elastic. Shirttail hem. Baby hem. Unlined. Length: 24".

A	B	C	D	E	F
4	6	8	10	2	2

95% Silk, 5% Spandex

28 MENORCA \$450
1-SK-3066 0-18
A-LINE SHAPE CLASSIC FIT

White, Campanula



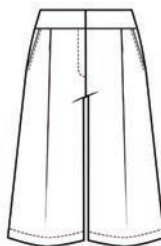
Skirt with rows of purl-embroidered geometric lace in five different guipure styles. Applied waist yoke with self facing sits 1" below the natural waist. Hidden side zipper. Side slits. Stretch satin chiffon lined with the shiny side facing in. Length: 27".

A	B	C	D	E	F
6	2	4	6	8	10

100% Polyester

31 JAUNT-WHT \$325
1-PT-2618 0-18
EXTRA-WIDE LEG LINDA SLIM FIT

White



Bermuda shorts in stretch Italian linen twill. Applied waistband. Fly-front. Front pleats and slash pockets. Back welt pockets and shaping darts. Lined. Front rise: 10 1/2". Inseam: 14". Leg opening: 29 1/2".

A	B	C	D	E	F
2	4	6	8	10	10

66% Linen, 32% Viscose, 2% Elastane

34 IBIZA \$425
1-TP-3005 0-18
EASY FIT

White, Campanula, Pink Yarrow, Navy



Stripe print pullover blouse in stretch cotton sateen with a long, solid navy polo placket. Shirt collar. V-notch. Shiny nickel buttons at placket and cuffs. French darts. Lower 6 3/4" of the shirred puff sleeves and the right placket stripes are cut on the cross grain. 2 1/2" shirttail panel with self facing. Unlined. Length: 24 1/2".

A	B	C	D	E	F
10	2	2	4	6	8

97% Cotton, 3% Spandex



A



B

A
 1-JK-3125 ALBA \$795
 1-DR-3109 TANAGER \$675

B
 1-JK-3125 ALBA \$795
 1-KN-3326 PARAGON-BLU \$295
 1-PT-3094 TANAGER \$425

C
 1-TP-3069 THALIA \$315
 5-SK-3088 IBERIA \$425

D
 1-KN-3126 BELLFLOWER-CARDI \$375
 1-KN-3067 BELLFLOWER-SHELL \$295
 1-PT-3162 FLAMENCO \$395



C



D



E



F

E
 1-TP-3065 MENORCA \$475
 5-PT-3136 CALATRAVA \$350

F
 1-JK-3157 IMMACULATE \$995
 1-KN-3326 PARAGON-BLU \$295
 1-SK-2984 TANAGER \$395

G
 1-JK-2982 TANAGER \$675
 1-TP-161 GWEN-WHT \$278
 1-SK-3066 MENORCA \$450

H
 1-TP-3005 IBIZA \$425
 5-PT-3128 HYACINTH \$595



G



H



35 RAMBUTAN

\$625

1-JK-3055

0-18

CLASSIC FIT

Pink Yarrow



Cutaway jacket in Italian stretch chain jacquard. Notched collar with lapels. Shiny nickel ring and toggle front closure. Flared 3/4 slit sleeves. Front and back princess seams. On-seam welt pockets. Shoulder pads. Nickel coin logo hang chain. Topstitching. Side slits with self facing. Lined. Length: 26 1/2".

A	B	C	D	E	F
6	8	10	4	2	4

68% Polyester, 30% Cotton, 2% Elastane

38 ANGLED-CARDI

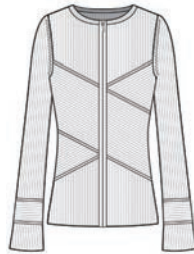
\$525

1-KN-3177

XS-XXL

SEMI FITTED

Ivory



Ottoman-rib cardigan in a diagonal patchwork separated by tubular jersey link-ons. Linked-on tubular jersey crew neck and placket. Front zipper in shiny silver. Slightly flared long sleeves. Unlined. Length: 24".

A	B	C	D	E	F
L	S	M	L	S	M

57% Viscose, 41% Nylon, 2% Spandex

41 PENELOPE

\$550

1-DR-3064

0-18

FIT & FLARE SHAPE

CLASSIC FIT

White, Pink Yarrow, Campanula, Navy



Stretch cotton sateen wrap dress in a placed geometric print. Notched collar with lapels. Placket with hidden buttons. Self-faced armholes, on-seam pockets, and hem. Front and back princess seams. Two-ply tie belt. Crochet belt loops. Lingerie loops. 70" sweep. Stretch satin chiffon lined. Dress length: 45". Skirt length: 27 3/4".

A	B	C	D	E	F
8	10	12	2	4	6

97% Cotton, 3% Spandex

36 HOLLYHOCK

\$395

1-TP-3268

0-18

CLASSIC FIT

Pink Yarrow



Pullover blouse in silk crêpe de chine with a stretch cotton knit jersey back. V-neck and faux placket with ruffles and pintucks. Topstitched shoulder yoke. Bust darts. Lingerie loops. Baby hem ruffles. Double turnback front hem. 1/2" back hem with coverstitch. Side slits. Front lined in stretch satin chiffon. Length: 24 3/4".

A	B	C	D	E	F
2	4	6	8	10	12

Front: 100% Silk Back: 95% Cotton, 5% Spandex

39 ANGLED-SHELL

\$350

1-KN-3158

XS-XXL

FITTED

Ivory



Ottoman-rib knit shell in a diagonal patchwork, separated by tubular jersey link-ons, reverses from a V-neck to a crew neck. Linked-on tubular jersey neck and cutaway armholes. Fully fashioned. Unlined. Length: 23".

A	B	C	D	E	F
L	S	M	L	S	M

57% Viscose, 41% Nylon, 2% Spandex

42 CLEO

\$550

1-DR-2565

0-18

A-LINE SHAPE

CLASSIC FIT

White, Black



Stretch crêpe dress with a placed rose garland print in front and back. Draped boat neck with pleated shoulders. Hidden back zipper. Front and back princess seams. Lingerie loops. Stretch satin chiffon lined. Dress length: 47 1/2". Skirt length: 30 3/4".

A	B	C	D	E	F
10	12	2	4	6	8

95% Polyester, 5% Spandex

37 RAMBUTAN

\$495

1-DR-3056

0-18

SHEATH SHAPE

CLASSIC FIT

Pink Yarrow



Dress in stretch Italian chain jacquard. Self-faced jewel neck and armholes. Hidden back zipper. Extended shoulders. Blouse pads. Princess and curved waist seams in front and back. Front waist darts. On-seam pockets. Lingerie loops. Lined. Dress length: 39 1/2". Skirt length: 22 3/4".

A	B	C	D	E	F
4	6	8	10	8	2

68% Polyester, 30% Cotton, 2% Elastane

40 PARAGON-PNK

\$295

1-KN-3328

XS-XXL

SEMI FITTED

Pink Yarrow



Pullover jersey knit top in ultrasoft Suvin cotton, flame-tempered for extra smoothness and strength. Linked-on tubular jersey crew neck. Elbow-length sleeves. Rib-start cuffs and hem. Fully fashioned. Unlined. Length: 24".

A	B	C	D	E	F
M	S	XS	XL	L	L

100% Suvin Cotton. Exclusive of Trims



43 IMMACULATE \$995
1-JK-3157 O-18
EASY FIT

White



Stretch Italian linen twill jacket has satin and chain-stitch floral embroidery with cabochon beads. Notched collar with lapels. Hook and eye front with decorative shiny nickel shank buttons. Flared bracelet sleeves with inverted cap pleats. Shoulder pads. Nickel coin logo hang chain. Stretch satin chiffon lined. Length: 21 3/4".

A	B	C	D	E	F
8	10	12	2	4	6

66% Linen, 32% Viscose, 2% Elastane

45 TABERNAS-WHT \$395
1-TP-3160 O-18
CLASSIC FIT

White




Blouse in cotton plain weave with eyelet embroidery. Solid white Mandarin collar, placket, shoulder yoke, and pocket flaps. Trapunto shoulders and cuffs. Front and back shaping panels. Bracelet sleeves shirred at caps and button cuffs. White mother of pearl buttons. Shirrtail hem. Side slits. Unlined. Length: 27".

A	B	C	D	E	F
10	2	4	6	8	10

Self: 100% Cotton. Embroidery Combo: 100% Cotton

48 DAY FOR NIGHT-CARDI \$375
1-KN-2558 XS-XXL
SEMI FITTED

Ivory, Black



Jersey knit cardigan in silk-softened cotton has a rose garland print at the front, back, and sleeves. Linked-on tubular jersey crew neck, placket, elbow-sleeve cuffs, and hem. White mother of pearl buttons. Fully fashioned. Unlined. Length: 23 1/2".

A	B	C	D	E	F
M	L	XS	S	S	M

70% Cotton, 20% Nylon, 10% Silk

44 STREAM-WHT \$275
1-TP-3170 O-18
CLASSIC FIT

White



Bias-cut crêpe-back satin blouse reverses from a V-neck to a boat neck. French binding at neck and cutaway armholes. Lingerie loops. Clean-finished hem. Unlined. Length: 22".

A	B	C	D	E	F
10	6	2	4	6	8

100% Viscose

46 PARADIGM-BLK \$195
1-TP-3325 XS-XXL
FITTED

Black



Fitted V-neck tee shirt in ultra-stretch nylon jersey. Self-banding at neck. Double-needle coverstitched short sleeves and hem. Cut and sew. Unlined. Length: 24 1/2".

A	B	C	D	E	F
XS	M	L	XL	L	M

87% Nylon, 13% Spandex

49 DAY FOR NIGHT-SHELL \$275
1-KN-2559 XS-XXL
SEMI FITTED

Ivory, Black



Jersey knit pullover shell in silk-softened cotton with black tipping at the neck. Linked-on tubular jersey crew neck, armholes, and hem. Fully fashioned. Unlined. Length: 23".

A	B	C	D	E	F
M	L	XS	S	S	M

70% Cotton, 20% Nylon, 10% Silk

R JAUNT-WHT \$325
1-PT-2618 O-18
EXTRA-WIDE LEG LINDA SLIM FIT

White



Bermuda shorts in stretch Italian linen twill. Applied waistband. Fly-front. Front pleats and slash pockets. Back welt pockets and shaping darts. Lined. Front rise: 10 1/2". Inseam: 14". Leg opening: 29 1/2".

A	B	C	D	E	F
2	4	6	8	10	10

66% Linen, 32% Viscose, 2% Elastane

47 CARBONADO \$395
1-DR-3176 O-18
A-LINE SHAPE CLASSIC FIT

Black



Italian ponte knit dress. Jewel neck and armholes with self facing. Exposed two-way shiny black metal front zipper and pull. Angled on-seam front pockets with self facing. Front and back princess seams. Modesty placket. Lingerie loops. Unlined. Dress length: 40 3/4". Skirt length: 24".

A	B	C	D	E	F
8	10	12	2	4	6

65% Viscose, 30% Polyamide, 5% Elastane

50 JAUNT-BLK \$325
1-PT-3269 O-18
EXTRA-WIDE LEG LINDA SLIM FIT

Black



Bermuda shorts in stretch Italian linen twill. Applied waistband. Fly-front. Front pleats and slash pockets. Back welt pockets and shaping darts. Unlined. Front rise: 10 1/2". Inseam: 14". Leg opening: 29 1/2".

A	B	C	D	E	F
10	10	2	4	6	8

66% Linen, 32% Viscose, 2% Elastane



A
 1-JK-3055 RAMBUTAN \$625
 1-DR-3056 RAMBUTAN \$495



B
 1-KN-3063 BLUSHING-CARDI \$425
 1-DR-3064 PENELOPE \$550

C
 1-JK-3125 ALBA \$795
 1-TP-3268 HOLLYHOCK \$395
 5-PT-3136 CALATRAVA \$350

D
 1-DR-2565 CLEO \$550





E



F



G



H

E
 1-KN-3177 ANGLED-CARDI \$525
 1-KN-3158 ANGLED-SHELL \$350
 1-PT-3162 FLAMENCO \$395

F
 1-TP-3160 TABERNAS-WHT \$395
 1-PT-3006 MYSTIC AURA \$450

G
 5-TP-3127 PARADE \$450
 1-PT-3269 JAUNT-BLK \$325

H
 5-JK-3132 LETIZIA \$1,095
 1-DR-3176 CARBONADO \$395



51 ALCAZAR \$495
1-JK-3002 0-18

CLASSIC FIT



Ivory, Verbena, Cerise, Camellia, Golden Spice, Fern Green, Green Ash

Exclusive, front-placed, floral tile-printed cutaway jacket in stretch cotton sateen. Notched collar with peaked lapels. Shiny nickel button front; 3 for each sleeve vent. Front and back princess seams. Pocket flap aligns with seams. Shoulder pads. Back vent. Stretch satin chiffon lined. Length: 26 1/2".

A	B	C	D	E	F
10	6	2	4	6	8

98% Cotton, 2% Spandex

54 MASTERWORK \$225
1-SC-3106 ONE SIZE



Ivory, Verbena, Cerise, Camellia, Golden Spice, Fern Green, Green Ash

Silk-rich modal tile-print gauze scarf in seven bright colors. Unlined. Baby hem. Length: 70". Width: 20".

A	B	C	D	E	F
ONE	ONE	ONE	ONE	ONE	ONE

85% Modal, 15% Silk

57 PARAGON-GRN \$295
1-KN-3329 XS-XXL

SEMI FITTED



Fern Green

Pullover jersey knit top in ultrasoft Suvin cotton, flame-tempered for extra smoothness and strength. Linked-on tubular jersey crew neck. Elbow-length sleeves. Rib-start cuffs and hem. Fully fashioned. Unlined. Length: 24".

A	B	C	D	E	F
L	M	S	XS	XL	XS

100% Suvin Cotton. Exclusive of Trims

52 ALDER \$495
1-TP-3104 0-18

CLASSIC FIT



Fern Green

Wrap blouse in stretch silk double georgette. Notched collar with draped lapels. Double lapel on right. Self-covered half ball shank button and self loop. Inside spaghetti ties. Bust darts and back waist darts. Flutter sleeves. Two-ply 70" self sash. Crochet belt loops. Baby hem. Georgette lined body. Length: 26 1/2".

A	B	C	D	E	F
10	8	2	4	6	8

94% Silk, 6% Spandex

55 ACACIA-CARDI \$325
1-KN-3007 XS-XXL

CLASSIC FIT



Fern Green

Jacket-look knit cardigan in Ottoman, jersey, reverse jersey, and pointelle stitches. Linked-on, tubular jersey notched collar with lapels, placket, pocket welts, cuffs, and hem. Fern green mother of pearl button front. 3/4 sleeves. Fully fashioned. Unlined. Length: 22".

A	B	C	D	E	F
L	M	XL	S	L	XS

79% Viscose, 21% Nylon

58 PARADIGM-IVR \$195
1-TP-3323 XS-XXL

FITTED



Quartz

Fitted V-neck tee shirt in ultra-stretch nylon jersey. Self-banding at neck. Double-needle coverstitched short sleeves and hem. Cut and sew. Unlined. Length: 24 1/2".

A	B	C	D	E	F
M	L	S	M	S	XL

87% Nylon, 13% Spandex

53 ALCAZAR \$395
1-PT-3105 0-18

STRAIGHT LEG

GISELE SLIM FIT



Ivory, Verbena, Cerise, Camellia, Golden Spice, Fern Green, Green Ash

Full-length jeans in stretch cotton sateen feature a placed floral tile print. Applied waistband with four pairs of belt loops. Fly-front with tack button. Front scoop pockets with rivets. Shiny nickel hardware. Back welt pockets. Unlined. Front rise: 10". Inseam: 33". Leg opening: 15".

A	B	C	D	E	F
10	8	2	4	6	8

98% Cotton, 2% Spandex

56 ACACIA-SHELL \$275
1-KN-3008 XS-XXL

SEMI FITTED



Fern Green

Pullover knit shell in Ottoman, jersey, reverse jersey, and pointelle stitches. Linked-on tubular jersey V-neck with twist detail, faux placket, armholes, and hem. Fully fashioned. Unlined. Length: 22".

A	B	C	D	E	F
L	M	XL	S	L	XS

79% Viscose, 21% Nylon

59 SWIFT-GRN \$325
1-PT-3003 0-18

SLIM LEG

LINDA SLIM FIT



Fern Green

Full-length pants in fluid stretch double weave. Applied waistband with belt loops. Fly-front with hook and bar. Front slash pockets with self facing. Front and back panel seams with 5" front slits. Back welt pockets and shaping darts. Unlined. Front rise: 10 1/2". Inseam: 32". Leg opening: 12 3/4".

A	B	C	D	E	F
8	10	8	2	4	6

96% Polyester, 4% Spandex



60 ESMERALDA \$425
 1-DR-3077 0-18
 SHEATH SHAPE CLASSIC FIT



Fern Green

Belted dress in stretch double weave. Front and back square portrait neck, armholes, and on-seam pockets with self facing. Hidden back zipper. Front and back princess panels. Self belt and buckle with faux-leather backing. Crochet belt loops. Lingerie loops. Back vent. Lined. Dress length: 47". Skirt length: 30 1/2".

A	B	C	D	E	F
10	12	2	4	6	8

96% Polyester, 4% Spandex

63 AROMATIC-CARDI \$495
 1-KN-2997 XS-XXL
 CLASSIC FIT



Verbena

Silk-rich cotton jersey knit cardigan with alternating rows of textured zig-zag and wave patterns in links-links and pointelle stitches. Linked-on tubular jersey V-neck and placket. Rib-start cuffs and hem. Side slits. Fully fashioned. Unlined. Length: 26".

A	B	C	D	E	F
S	XS	M	L	S	M

70% Cotton, 30% Silk

66 SOLARIUM \$495
 1-TP-3000 0-18
 EASY FIT



Verbena

Lace-look pullover blouse features allover purl-embroidered, hand-cutwork in a tropical floral pattern. Boat neck. 3/4 bell sleeves. Lingerie loops. Adjustable stretch cami. Length: 23".

A	B	C	D	E	F
8	10	4	2	4	6

100% Polyester

61 SOLARIUM \$695
 1-DR-2999 0-18
 A-LINE SHAPE CLASSIC FIT



Verbena

Lace-look dress features allover purl-embroidered, hand-cutwork in a tropical floral pattern. Open jewel neck. Hidden back zipper. Front and back princess seams. Lingerie loops. Clean hem with bias binding. Lined. Dress length: 43 3/4". Skirt length: 27".

A	B	C	D	E	F
2	4	6	8	10	6

100% Polyester

64 AROMATIC-SHELL \$350
 1-KN-2998 XS-XXL
 SEMI FITTED



Verbena

Silk-rich jersey knit shell with alternating rows of textured zig-zag and wave patterns in links-links and pointelle stitches in front. Linked-on rib-knit V-neck and armholes. Tubular jersey hem with front ribs. Fully fashioned. Unlined. Length: 22 1/2".

A	B	C	D	E	F
S	XS	M	L	S	M

70% Cotton, 30% Silk

67 VERANDA \$395
 1-TP-3009 0-18
 CLASSIC FIT



Ivory, Absinthe Green, Verbena, Light Verbena, Golden Spice, Blue Bell, Campanula, Imperial Blue, Fern Green

Bias-cut, stretch silk crêpe de chine sleeveless tank blouse in an exclusive placed flower print from a renowned London studio. Open scoop neck and cutaway armholes with French binding. Lingerie loops. Clean-finished hem. Unlined. Length: 23 1/2".

A	B	C	D	E	F
2	4	6	8	10	2

92% Silk, 8% Spandex

62 PRINTEMPS \$675
 1-DR-2923 0-18
 A-LINE SHAPE CLASSIC FIT



Imperial Blue, Blue Bell, Green Ash, White, Parfait Pink, Lily pad, Black

Silk crêpe de chine shirt dress in placed tile and border prints. Stand collar. Mother of pearl button and loop front and wide cuffs. Circle-lace tape insets at front and back shoulder yoke. Bracelet sleeves. Shirred front and back yokes and hip seams. Two-ply sash belt. Lined body. Dress length: 43 1/2". Skirt length: 26 5/8".

A	B	C	D	E	F
4	6	8	10	12	2

95% Silk, 5% Spandex

65 VERANDA \$550
 1-SK-3010 0-18
 A-LINE SHAPE CLASSIC FIT



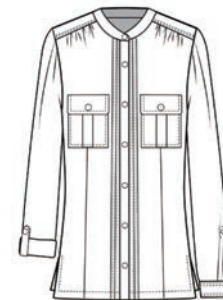
Ivory, Absinthe Green, Verbena, Light Verbena, Golden Spice, Blue Bell, Campanula, Imperial Blue, Fern Green

Stretch silk crêpe de chine wrap skirt in an exclusive placed flower print from a renowned London studio. Applied waistband with self facing, hook and bar, and darts. Inside button. Attached 68" self ties. Applied striped wrap edge and hem. Baby hem. Lined. Length: 36".

A	B	C	D	E	F
2	4	6	8	10	2

92% Silk, 8% Spandex

68 ECHO \$450
 1-TP-3159 0-18
 EASY FIT



White

Silk-rich georgette camp shirt with button-tab convertible sleeves. Mandarin collar with button. Mother of pearl button placket. Shoulder yoke with front shirring. Box-pleated patch pockets with button flaps. Four pintucks at center front and back. Button cuffs. Front and back darts. Side slits. Unlined. Length: 27".

A	B	C	D	E	F
2	4	6	8	10	8

75% Silk, 25% Viscose



A



B

A
 1-JK-3002 ALCAZAR \$495
 1-TP-3159 ECHO \$450
 1-PT-3105 ALCAZAR \$395

B
 1-KN-3007 ACACIA-CARDI \$325
 1-KN-3008 ACACIA-SHELL \$275
 1-PT-2618 JAUNT-WHT \$325

C
 1-TP-3104 ALDER \$495
 1-SK-3010 VERANDA \$550

D
 5-JK-3184 PRADO \$550
 1-TP-3104 ALDER \$495
 1-PT-3003 SWIFT-GRN \$325



C



D



E



F

E
 1-DR-3077 ESERALDA \$425
 1-SC-3106 MASTERWORK \$225

F
 1-KN-2997 AROMATIC-CARDI \$495
 1-KN-2998 AROMATIC-SHELL \$350
 1-PT-3105 ALCAZAR \$395

G
 1-DR-2923 PRINTEMPS \$675
 1-BT-2960 JANUS \$325

H
 1-JK-2982 TANAGER \$675
 1-TP-3009 VERANDA \$395
 1-SK-3010 VERANDA \$550



G



H



69 MYSTIC AURA \$650
1-JK-2994 0-18
CLASSIC FIT



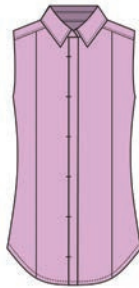
Verbena

Italian stretch double weave cotton jacket with pleated back peplum. Notched collar with lapels. Verbena mother of pearl button front; 2 for removable 1 1/2" back belt. Besom flap pockets. Front darts. Back princess seams. Shoulder pads. Italian crinkle gauze bias piping. Nickel coin logo hang chain. Lined. Length: 27 1/2".

A	B	C	D	E	F
4	6	8	10	6	2

51% Cotton, 44% Polyamide, 5% Elastane

72 GWEN-LAV \$295
1-TP-2995 0-18
CLASSIC FIT



Verbena

Stretch cotton sateen sleeveless blouse. Shirt collar. Bar-tacked placket with hidden verbena mother of pearl buttons. Armholes with double-fold inside bias facing. Front and back princess seams. Two-ply back yoke with forward shoulder seam. Lingerie loops. Shirrtail hem. Unlined. Length: 27".

A	B	C	D	E	F
6	8	10	10	2	4

98% Cotton, 2% Spandex

70 PARADIGM-WHT \$195
1-TP-3322 XS-XXL
FITTED



White

Fitted V-neck tee shirt in ultra-stretch nylon jersey. Self-banding at neck. Double-needle coverstitched short sleeves and hem. Cut and sew. Unlined. Length: 24 1/2".

A	B	C	D	E	F
S	XL	XS	S	M	L

87% Nylon, 13% Spandex

73 PARAGON-PUR \$295
1-KN-3330 XS-XXL
SEMI FITTED



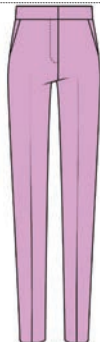
Verbena

Pullover jersey knit top in ultrasoft Suvin cotton, flame-tempered for extra smoothness and strength. Linked-on tubular jersey crew neck. Elbow-length sleeves. Rib-start cuffs and hem. Fully fashioned. Unlined. Length: 24".

A	B	C	D	E	F
XL	L	M	S	XS	XL

100% Suvin Cotton. Exclusive of Trims

71 MYSTIC AURA \$450
1-PT-3006 0-18
SLIM LEG LINDA SLIM FIT



Verbena

Full-length pants in Italian stretch-cotton double weave. Applied waistband. Fly-front. Front slash pockets. Back welt pockets and shaping darts. Unlined. Front rise: 10 1/2". Inseam: 32". Leg opening: 13 1/2".

A	B	C	D	E	F
4	6	8	10	6	2

51% Cotton, 44% Polyamide, 5% Elastane



A
 1-JK-2994 MYSTIC AURA \$650
 1-TP-3009 VERANDA \$395
 1-PT-3006 MYSTIC AURA \$450

B
 1-JK-2994 MYSTIC AURA \$650
 1-TP-3009 VERANDA \$395
 1-PT-3006 MYSTIC AURA \$450

C
 1-DR-2999 SOLARIUM \$695
 1-SC-3106 MASTERWORK \$225

D
 1-TP-3000 SOLARIUM \$495
 1-DR-2999 SOLARIUM \$695





per se

BY CARLISLE



74 PARASOL

\$475

5-KN-3130

XS-XXL

OVERSIZED FIT

Golden Spice



Open-front, silk-enriched knit shrug cardigan in a zig-zag pattern features a half-Milano stitch alternating with reverse jersey. Shawl neck and front edges. Dolman bracelet sleeves. Rib-start cuffs. Unlined. Length: 24 1/4".

Size chart for item 74

70% Cotton, 30% Silk

77 PALISADE

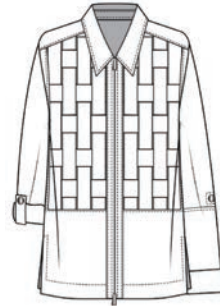
\$475

5-TP-3085

O-18

EASY FIT

White



Blouse in stretch cotton sateen with open front and back lattice panels woven in two-ply strips. Shirt collar. Placket with two-way zipper. Sleeves convert to 3/4 length with button-tabs. Elbow and waist seams align. Two-button cuffs. Shiny nickel hardware. Shoulder yoke. Self-faced hem and slits. Unlined. Length: 28".

Size chart for item 77

98% Cotton, 2% Spandex

80 GOYA

\$650

5-JK-3070

O-18

CLASSIC FIT

Black



High-low jacket in shiny, embossed herringbone stretch jacquard. Wing collar. Shiny black metal button front. Origami bracelet sleeves with elbow seams. Shoulder pads. Pointed front hem. Stretch satin chiffon lined. Front length: 25". Back length: 20".

Size chart for item 80

75% Acetate, 22% Polyamide, 3% Elastane

75 PARASOL

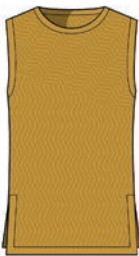
\$375

5-KN-3131

XS-XXL

FITTED

Golden Spice



Silk-enriched pullover knit shell in a zig-zag pattern features a half-Milano stitch alternating with reverse jersey. Linked-on tubular jersey crew neck. Full-needle armholes, hem, and self side slits. Unlined. Length: 24 1/4".

Size chart for item 75

70% Cotton, 30% Silk

78 VIBRATO

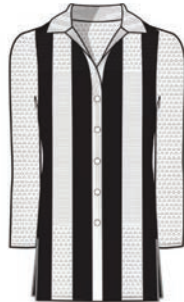
\$425

5-KN-3096

XS-XXL

CLASSIC FIT

Black, White



Intarsia-striped, half-Milano cotton cardigan features 3/4 sleeves, shoulder yoke, and hem with open triangles. Linked-on full-needle polo collar and placket. Matching four-hole resin buttons in black and white. Half-Milano start cuffs and hem. Fully fashioned. Side slits. Unlined. Length: 28".

Size chart for item 78

100% Cotton

81 GOYA

\$450

5-SK-3163

O-18

PENCIL SHAPE

CLASSIC FIT

Black



Shiny, embossed herringbone stretch jacquard skirt with an angled, off-center seam that opens into a center front slit with self facing. Applied curved waist yoke sits 1" below the natural waist. Hidden back zipper. Stretch satin chiffon lined. Length: 26".

Size chart for item 81

75% Acetate, 22% Polyamide, 3% Elastane

76 INSPIRATION

\$395

5-PT-3135

O-18

STRAIGHT LEG

BROOKE CLASSIC FIT



Black, Ivory, Golden Spice, Terracotta, Green Eyes, Amber Green

Stretch cotton twill full-length jeans in a tropical leaf and kingfisher bird print. Applied waistband with belt loops. Fly-front with tack button. Five-pocket styling with rivets. Shiny nickel hardware. Back shaping yoke. Unlined. Front rise: 10 1/4". Inseam: 34". Leg opening: 14 3/4".

Size chart for item 76

96% Cotton, 4% Spandex

79 VIBRATO

\$395

5-PT-3097

XS-XXL

EXTRA-WIDE LEG

COCO SLIM FIT

Black



Ankle-length, pull-on knit cotton pants in a half-Milano stitch with open triangles from the calves to the hem. Applied full-needle waistband. Front slash pockets. Unlined. Front rise: 9 1/2". Inseam: 29". Leg opening: 24".

Size chart for item 79

83% Cotton, 17% Nylon

82 PICASSO

\$450

5-DR-3092

O-18

A-LINE SHAPE

CLASSIC FIT

Black, Ivory, Golden Spice, Terracotta, Amber Green, Green Eyes



Silk-rich dress in stretch cotton shirting with a placed tropical leaf and kingfisher print. Wide jewel neck and squared armholes with self facing. Black side panels. Hidden back zipper. 10" pleated black ribbon origami appliqué with nickel rings. Shirred skirt. Lingerie loops. Lined. Dress length: 48". Skirt length: 31".

Size chart for item 82

51% Cotton, 40% Silk, 9% Spandex



83 LETIZIA \$1,095 5-JK-3132 0-18

CLASSIC FIT



Golden Spice, Aragon, Black, Metallic Gold

Hand-loomed metallic French jacquard jacket in a placed stripe pattern. Notched collar with lapels and inside facing. Sculptural nickel buttons. Welt flap pockets. Front and back princess seams. On-seam pockets with self facing. Back inverted pleat stitched down for 2 1/2". Shoulder pads. Lined. Length: 23 1/4".

Size chart table with columns A-F and rows 12, 2, 4, 6, 8, 10

62% Polyester, 32% Cotton, 3% Polyamide, 2% Viscose, 1% Metallic

86 GOLDEN-CARDI \$525 5-KN-3119 XS-XXL

CLASSIC FIT



Black, Golden Spice

Open-front pointelle knit cardigan with an exclusive pattern of placed flowers and leaves in jersey and reverse jersey intarsia. Linked on tubular jersey jewel neck, placket, cuffs, pocket welts, and hem. Kissing front with three shiny gold buckles. Fully fashioned. Unlined. Length: 34".

Size chart table with columns A-F and rows M, XS, S, M, XS, S

70% Viscose, 30% Nylon

89 BALANCE-BLK \$325 5-KN-3086 XS-XXL

OVERSIZED FIT



Black

Pullover open pointelle knit top in linen-cooled organic cotton reverses from a V-neck to a crew neck. Linked-on rib-knit neck. Front baby cables. Dolman sleeves. Rib-start cuffs and hem. Fully fashioned. Adjustable, jersey knit stretch modal cami. Length: 22".

Size chart table with columns A-F and rows M, L, S, M, L, S

60% Organic Cotton, 40% Linen Combo: 93% Modal, 7% Spandex

84 ROYALE \$225 5-SC-3161 ONE SIZE

Golden Spice, Aragon, Black, Gold



Silk-softened gauze scarf with a print that matches the French jacquard of the Letizia jacket. Baby hem on all four sides. Unlined. Length: 70". Width: 20".

Size chart table with columns A-F and row ONE

85% Modal, 15% Silk

87 GOLDEN-SHELL \$325 5-KN-3095 XS-XXL

SEMI FITTED



Black, Golden Spice

Plaited jersey knit shell with an exclusive pattern of placed flowers and leaves in jersey and reverse jersey intarsia. Linked-on tubular jersey crew neck, cutaway armholes, and hem. Fully fashioned. Unlined. Length: 23 1/2".

Size chart table with columns A-F and rows M, XS, S, M, XS, S

70% Viscose, 30% Nylon

90 TEMPRANILLO \$550 5-JK-3084 0-18

CLASSIC FIT



Black

High-low jacket in purl-embroidered, geometric cutwork lace with topstitched solid stretch cotton sateen bias binding at the stand collar, placket, cuffs, shoulders, sleeves, and front and back princess seams. Sateen bottom band. Shiny nickel zipper. Unlined. Front length: 19 1/2". Back length: 21".

Size chart table with columns A-F and rows 2, 4, 6, 8, 10, 12

Self: 100% Polyester Combo: 97% Cotton, 3% Spandex

85 FINESSE-BLK \$425 5-PT-2993 0-18

STRAIGHT LEG

ELLE EASY FIT



Black

Full-length pants in stretch double weave. Applied waist yoke with front flap besom pockets. Fly-front. Front slash pockets and shaping pleats. Tacked cuffs. Unlined. Front rise: 11 3/4". Inseam: 32". Leg opening: 15".

Size chart table with columns A-F and rows 10, 2, 4, 4, 6, 8

96% Polyester, 4% Spandex

88 CARAVEL \$350 5-KN-3110 XS-XXL

SEMI FITTED



Black

Silk-softened pullover jersey knit top features bracelet sailor sleeves with full-needle plackets and seven domed buttons in shiny nickel on each. Linked-on, zig-zag, tubular-rib crew neck, cuffs, and hem. Fully fashioned. Unlined. Length: 22 1/2".

Size chart table with columns A-F and rows XS, S, M, L, S, M

70% Cotton, 20% Nylon, 10% Silk

91 TEMPRANILLO \$495 5-DR-3083 0-18

FIT & FLARE SHAPE

SEMI FITTED



Black

Dress with stretch Italian ponte bodice, stretch shirting skirt, and purl-embroidered cutwork lace hem. Banded jewel neck and armholes. Hidden back zipper. Encased elastic waist. Self belt. Shiny nickel D-ring buckle. Front princess seams. Back skirt princess seams. Curved skirt seams. Lingerie loops. Unlined. Dress length: 50". Skirt length: 32 5/8".

Size chart table with columns A-F and rows 10, 12, 2, 4, 6, 8

Bodice: 65% Viscose, 30% Polyester, 5% Elastane Skirt: 97% Cotton, 3% Spandex. Lace Combo: 100% Polyester



A
 5-KN-3130 PARASOL \$475
 5-KN-3095 GOLDEN-SHELL \$325
 1-PT-3269 JAUNT-BLK \$325

B
 5-KN-3096 VIBRATO \$425
 1-TP-3170 STREAM-WHT \$275
 5-PT-3097 VIBRATO \$395

C
 5-TP-3085 PALISADE \$475
 1-TP-3170 STREAM-WHT \$275
 5-PT-3135 INSPIRATION \$395

D
 5-DR-3092 PICASSO \$450





E



F

E
 5-KN-3119 GOLDEN-CARDI \$525
 1-TP-3325 PARADIGM-BLK \$195
 1-PT-3024 EL DORADO \$450

F
 5-JK-3084 TEMPRANILLO \$550
 1-TP-885 TORY-BLK \$95
 5-SK-3163 GOYA \$450
 1-SC-4214 SPELLBOUND \$125

G
 5-KN-3110 CARAVEL \$350
 5-PT-3097 VIBRATO \$395

H
 5-DR-3083 TEMPRANILLO \$495
 1-SC-4214 SPELLBOUND \$125



G



H



92 GARDEN PARTY \$695

5-DR-3091 0-18

A-LINE SHAPE CLASSIC FIT



Black, Campanula, Pink Yarrow, Fern Green

Dress in placed, purl-embroidered floral cutwork lace. Open V-neck and armholes with facing. Hidden back zipper. Front and back darts. Lingerie loops. Stretch satin chiffon lining sewn to dress. Dress length: 46". Skirt length: 28 3/4".

Size chart table with columns A-F and rows 12-10

100% Polyester

95 PRADO \$550

5-JK-3184 XS-XXL

EASY FIT



Bosphorus, Fern Green, Blue Bell, Campanula, Pink Yarrow, Cerise, Plum Caspia, Black

Ponte knit jacket in a front-placed floral print with solid black baseball collar, placket, cuffs, hem, and front and back curved insets. Long exposed shiny nickel sleeve zippers and two-way front zipper. Bracelet sleeves. Welt pockets. Stretch satin chiffon lined. Length: 24 1/2".

Size chart table with columns A-F and rows M-S

94% Polyester, 6% Spandex

98 SUNDOWN \$375

5-KN-3072 XS-XXL

FITTED



Black

Jersey knit evening top with front and back angled traveling rib accents. Linked-on tubular jersey square portrait neck. Ribbed raglan elbow sleeves. Rib-start cuffs and hem. Fully fashioned. Unlined. Length: 23".

Size chart table with columns A-F and rows L-S

79% Viscose, 21% Nylon

93 PARADE \$450

5-TP-3127 0-18

CLASSIC FIT



Black, White, Golden Spice, Fern Green, Campanula, Pink Yarrow, Cerise, Alpine Green

Blouse in silky plain weave with a placed, multi-width stripe print. Notched rever collar with lapels. Smoke mother of pearl button front. Self-faced armholes. Four-piece front self sash. Shiny gunmetal buckle. Front and back shaping darts. Two-ply shoulder yoke. Lingerie loops. Side slits. Unlined. Length: 26 1/2".

Size chart table with columns A-F and rows 4-10

54% Viscose, 46% Rayon

96 HYACINTH \$725

5-JK-3076 0-18

CLASSIC FIT



Campanula

Double-breasted blazer in Japanese crêpe. Boat neck, slit sleeves, and side slits with self facing. Self-covered metal buttons. Inside buttons. Shoulder pleats. Front and back princess seams. On-seam flap pockets. Lingerie loops. Print Italian crêpe piping inside. Nickel coin logo and hang chain. Stretch satin chiffon lined. Length: 29 1/2".

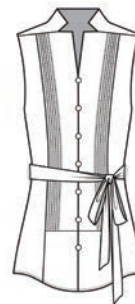
Size chart table with columns A-F and rows 2-10

64% Triacetate, 36% Polyester, Exclusive Of Trim. Piping: 100% Viscose

99 BARBIANA \$295

5-TP-3164 0-18

CLASSIC FIT



White

Tuxedo bib blouse in stretch cotton sateen with six front pintucks. Notched stand collar with no-fold lapels. Self-covered buttons with self loops. Armholes with bias self binding. Two-ply shoulder yoke and 75" self tie belt with crochet loops. Front and back princess seams. Shirttail hem. Lingerie loops. Unlined. Length: 26".

Size chart table with columns A-F and rows 8-6

98% Cotton, 2% Spandex

94 PARADE \$450

5-PT-3074 0-18

WIDE LEG CHRISTY CLASSIC FIT



Black, White, Golden Spice, Fern Green, Campanula, Pink Yarrow, Cerise, Alpine Green

Ankle-length, plain-weave, pull-on pants in a multi-width stripe print. Applied waistband. Encased elastic 2 1/4" from center front. Two-ply self sash. Belt loops. On-seam, and back patch pockets. Mother of pearl buttons, tabs, and black facing for cuffs. Side stripes. Unlined. Front rise: 11 1/2". Inseam: 30". Leg opening: 23".

Size chart table with columns A-F and rows 2-10

54% Viscose, 46% Rayon

97 HYACINTH \$595

5-PT-3128 0-18

EXTRA-WIDE LEG CHRISTY CLASSIC FIT



Campanula

Full-length pants in Japanese crêpe with front and back side pleats stitched down to 11" below top edge. Elegant no-waistband style. Hidden side zipper. Back shaping darts. Stretch satin chiffon lined. Front rise: 10 3/4". Inseam: 34". Leg opening: 22".

Size chart table with columns A-F and rows 2-10

64% Triacetate, 36% Polyester

100 TROPICAL \$450

5-SK-3071 0-18

FIT & FLARE SHAPE CLASSIC FIT



Fern Green, Irish Green, Honeydew, Black, Camellia, Campanula

Placed tropical-print skirt in Italian striped organza jacquard with black satin stripe appliqués at the hem. Applied waistband sits at the natural waist. Hidden side zipper. Waist pleats in front and back achieve a 64 1/2" sweep. Lined. Length: 28".

Size chart table with columns A-F and rows 4-2

100% Polyester



101 VERDURE \$450 5-KN-3134 XS-XXL

EASY FIT



Green Eyes

Linen-blend, pointelle-knit cardigan in a tape yarn with full-Milano trim at hood, cuffs, placket, and shirttail hem. Self knit drawcord. Tubular jersey hood tunnel. Two-way shiny nickel zipper front. Dolman 3/4 sleeves with drop shoulders. Rib-start kangaroo pocket edge. Fully fashioned. Adjustable knit cami. Length: 24 1/2".

Size chart table with columns A-F and rows L, S, M, L, S, M

Self: 40% Linen, 33% Cotton, 27% Nylon Camisole: 93% Cotton, 7% Spandex

104 PARADISE \$495 5-KN-2482 XS-XXL

CLASSIC FIT



Green Eyes, Ivory, Camellia, Lily pad

Silk birdseye jacquard knit cardigan in a tropical patch pattern. Linked-on tubular jersey striped V-neck and placket. Tubular jersey cuffs. Self-start hem. Side slits faced with full-needle rib. Unlined. Length: 25 1/2".

Size chart table with columns A-F and rows M, L, S, M, L, S

100% Silk

107 JARDINIERE \$595 5-DR-2513 0-18

A-LINE SHAPE

EASY FIT



Lily pad, Camellia, Green Ash, Green Eyes, Black, Ivory, Terracotta

Placed tropical patch-print dress in stretch silk crêpe de chine. Self-faced boat neck and armholes. Back keyhole. Self-covered ball shank button. Left side knife pleats with stitched edges. Shirred waist with encased-elastic. Two-ply self belt with crochet loops. Lingerie loops. Lined. Dress length: 45". Skirt length: 28".

Size chart table with columns A-F and rows 6, 8, 10, 12, 2, 4

95% Silk, 5% Spandex

102 PETIT PALAIS \$375 5-TP-2888 0-18

CLASSIC FIT



Lily pad, Camellia, Green Ash, Green Eyes, Black, Ivory, Terracotta

Placed tropical patch print high-low blouse in silk-enriched stretch cotton shirting. Shirt collar. Placket with white mother of pearl buttons. Flange armholes with self facing. Button patch pocket. Two-ply side insets at the shirttail hem. Bust darts and back waist darts for shape. Unlined. Front and back lengths: 25 3/4".

Size chart table with columns A-F and rows 2, 4, 6, 8, 10, 12

51% Cotton, 40% Silk, 9% Spandex

105 PAINTED FERN \$295 5-KN-2512 XS-XXL

STRAIGHT FIT

SEMI FITTED



Ivory, Green Eyes, Lily pad

Silk full Milano-stitch knit pullover shell with textured, placed fern motifs. Linked-on tubular jersey crew neck, armholes, and hem. Striped neck and armholes in 3 colors. Fully fashioned. Unlined. Length: 23 1/2".

Size chart table with columns A-F and rows L, S, M, L, S, M

94% Silk, 6% Nylon

108 BALANCE-WHT \$325 5-KN-3178 XS-XXL

OVERSIZED FIT

Parchment



Pullover open pointelle knit top in linen-cooled organic cotton reverses from a V-neck to a crew neck. Linked-on rib-knit neck. Front baby cables. Dolman sleeves. Rib-start cuffs and hem. Fully fashioned. Adjustable, jersey knit stretch modal cami. Length: 22".

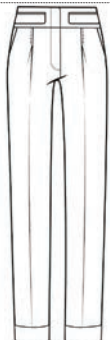
Size chart table with columns A-F and rows S, M, L, S, M, L

60% Organic Cotton, 40% Linen Combo: 93% Modal, 7% Spandex

103 FINESSE-WHT \$425 5-PT-3239 0-18

STRAIGHT LEG

ELLE EASY FIT



White

Full-length pants in stretch double weave. Applied wide waist yoke with front flap besom pockets. Fly-front. Front slash pockets and shaping pleats. Tacked cuffs. Unlined. Front rise: 11 3/4". Inseam: 32". Leg opening: 15".

Size chart table with columns A-F and rows 2, 4, 6, 12, 8, 10

96% Polyester, 4% Spandex

106 GREENWOOD \$525 5-OW-3133 0-18

EASY FIT



Green Eyes

Water-repellent rain anorak in coated taffeta with two-ply hood and trapunto placket. Two-way exposed zipper. Side bungee cords with grommets and spring stoppers. Front cord tie with aglets. Sleeves with darts and snap cuffs. Side-seam pockets. Shiny nickel hardware. Back vent and princess seams. Unlined. Length: 30".

Size chart table with columns A-F and rows 6, 8, 10, 2, 2, 4

100% Polyester

109 IBERIA \$425 5-SK-3088 0-18

A-LINE SHAPE

CLASSIC FIT



White, Bittersweet, Pink Yarrow, Camellia, Celandine, Campanula, Blue Bell, Fern Green, Summer Green, Antique Gold

Cotton sateen skirt has shiny floral embroidery in front with rose gold beads. Elegant, no-waistband style sits 1" below the natural waist. Hidden side zipper. Front inverted pleat stitched down 7" from top edge. Back patch pockets and vent. Lined. Length: 21".

Size chart table with columns A-F and rows 10, 12, 2, 4, 6, 8

100% Cotton



A



B

A
 5-JK-3070 GOYA \$650
 5-DR-3091 GARDEN PARTY \$695

B
 1-JK-2982 TANGER \$675
 1-TP-3104 ALDER \$495
 5-SK-3071 TROPICAL \$450

C
 5-KN-3086 BALANCE-BLK \$325
 5-PT-3074 PARADE \$450

D
 5-JK-3076 HYACINTH \$725
 5-PT-3128 HYACINTH \$595



C



D



E



F



G



H

- E
- 5-OW-3133 GREENWOOD \$525
- 5-TP-2888 PETIT PALAIS \$375
- 1-PT-2955 RAVISHING-WHT \$325
- F
- 5-DR-2513 JARDINIERE \$595
- G
- 5-KN-3178 BALANCE-WHT \$325
- 5-PT-3136 CALATRAVA \$350
- H
- 5-KN-2482 PARADISE \$495
- 5-KN-2512 PAINTED FERN \$295
- 1-PT-3013 PATIO \$375



110 GWEN-BLK

\$278

1-TP-780

0-18

CLASSIC FIT

Black



Solid stretch cotton shirting blouse. Shirt collar with topstitch. Hidden button front placket with bar tack details. Shaped with shoulder yoke and princess seams. High-low shirrtail. Unlined. Length: 26".

A	B	C	D	E	F
2	12	8	6	6	6

98% Cotton, 2% Spandex

113 TORY-BLK

\$95

1-TP-885

SM-LX

FITTED

Black



Reversible stretch nylon seamless jersey shapewear. Scoop neck front, V-neck back. Turnback and topstitching at hemline. Cut and sew. Unlined. Length: 25".

A	B	C	D	E	F
ML	XSS	XSS	ML	ML	XSS

96% Nylon, 4% Spandex

116 SOHO-BLK

\$298

5-PT-107

0-18

SKINNY LEG

EVA LEGGINGS FIT

Black



Ankle-length stretch leggings in a soft, lightweight ponte knit. Pull-on style with 2" set-on elastic waistband. Front princess seams for shape. Unlined. Front rise: 10 1/2". Inseam: 29". Leg opening: 11 1/2".

A	B	C	D	E	F

65% Rayon, 32% Nylon, 3% Spandex

111 GWEN-WHT

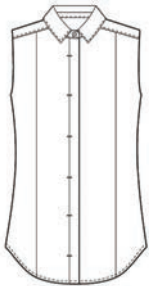
\$278

1-TP-161

0-18

CLASSIC FIT

White



Solid stretch cotton shirting blouse. Shirt collar with topstitch. Hidden button front placket with bar tack details. Shaped with shoulder yoke and princess seams. High-low shirrtail. Unlined. Length: 26".

A	B	C	D	E	F
6	6	2	12	8	12

98% Cotton, 2% Spandex

114 TORY-WHT

\$95

1-TP-163

SM-LX

FITTED

White



Reversible stretch nylon seamless jersey shapewear. Scoop neck front, V-neck back. Turnback and topstitching at hemline. Cut and sew. Unlined. Length: 25".

A	B	C	D	E	F
XSS	XLX	ML	XSS	XSS	XLX

96% Nylon, 4% Spandex

117 SOHO-NVY

\$298

5-PT-961

0-18

SKINNY LEG

EVA LEGGINGS FIT

Navy



Ankle-length stretch leggings in a soft, lightweight ponte knit. Pull-on style with 2" set-on elastic waistband. Front princess seams for shape. Unlined. Front rise: 10 1/2". Inseam: 29". Leg opening: 11 1/2".

A	B	C	D	E	F
8	2	12	6	4	10

65% Rayon, 32% Nylon, 3% Spandex

112 EMMA-BLK

\$188

5-TP-2259

XS-XXL

CLASSIC FIT

Black



Versatile, short sleeve pullover in the softest Japanese knit cotton jersey. The hand feel is silky and the fit, extremely comfortable. Classic fit. V-neckline. Short sleeves. Pullover styling. Overlock topstitch detailing. Self turnback finish at cuffs and hem. Cut and sew. Unlined. Length: 26".

A	B	C	D	E	F
M	S	L	M	S	S

100% Cotton

115 TORY-ND

\$95

1-TP-884

XS-XXL

FITTED

Nude



Reversible stretch nylon seamless jersey shapewear. Fitted. Scoop neckline front, V-neckline back. Turnback and topstitching at hemline. Cut and sew. Unlined. Length: 25".

A	B	C	D	E	F
XSS	ML	XSS	ML	XSS	ML

96% Nylon, 4% Spandex

118 HORSESHOE

\$298

5-PT-734

0-18

SKINNY LEG

EVA LEGGINGS FIT

Black



Ankle-length riding leggings in a textured stretch European twill with dry cleanable black leather knee patches, besom zipper pockets and zipper pulls. Applied waistband. Fly-front with black tack button. Angled side godets meet at the calf. Zippers at leg openings. Unlined. Front rise: 10 1/2". Inseam: 29". Leg opening: 10 3/4".

A	B	C	D	E	F
2	4	8	10	12	6

Body: 47% Cotton, 46% Modal, 7% Elastane. Combo: 100% Genuine Leather



119 NIKITA-BLK

\$348

5-PT-852

0-18

STRAIGHT LEG

LINDA SLIM FIT



Black

Full-length, double-knit, smooth fitting stretch straight-leg pants. Pull-on styling. Contoured waistband with exposed back elastic. Front pintucked crease line. Unlined. Front rise: 10 1/4". Inseam: 34". Leg opening: 17 1/2".

A	B	C	D	E	F
6	8	4	0	6	8

70% Viscose, 26% Polyamide, 4% Spandex

122 NIKITA-CML

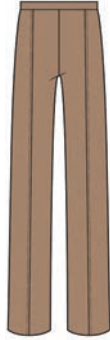
\$348

1-PT-2389

0-18

STRAIGHT LEG

LINDA SLIM FIT



Warm Camel

Full-length, pull-on pants in Italian ponte knit. Applied waistband with back satin elastic. Pintucked front and back creases. Back welt faux pockets. Unlined. Front rise: 10 1/4". Inseam: 34". Leg opening: 17 1/2".

A	B	C	D	E	F
4	6	10	12	14	0

71% Viscose, 24% Polyamide, 5% Elastane

120 NIKITA-MEL

\$348

5-PT-769

0-18

STRAIGHT LEG

LINDA SLIM FIT



Charcoal

Full-length, smooth ponte knit pants from Italy for versatile wear. Pull-on straight waistband with exposed back elastic. Front pintucked crease line. Unlined. Front rise: 10 1/4". Inseam: 34". Leg opening: 17 1/2".

A	B	C	D	E	F
10	0	2	4	2	12

70% Viscose, 25% Polyamide, 5% Elastane

123 SASHA-IVR

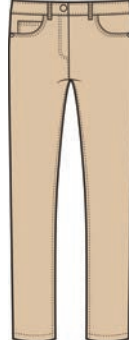
\$328

5-PT-917

0-18

SLIM LEG

STEPHANIE SLIM FIT



Biscotti

Ankle-length jeans in garment-washed, stretch cotton twill. Applied waistband with belt loops. Fly-front with tack button. Five-pocket styling with rivets. Gunmetal hardware. Unlined. Front rise: 9 1/4". Inseam: 31". Leg opening: 12 3/4".

A	B	C	D	E	F
12	8	10	6	4	2

75% Cotton, 13% Lyocell, 9% Rayon, 3% Spandex

121 NIKITA-NVY

\$348

5-PT-1244

0-18

STRAIGHT LEG

LINDA SLIM FIT



Navy

Full-length, double-knit, smooth fitting stretch straight-leg pants. Pull-on styling. Contoured waistband with exposed back elastic. Front pintucked crease line. Unlined. Front rise: 10 1/4". Inseam: 34". Leg opening: 17 1/2".

A	B	C	D	E	F
0	14	6	8	10	4

71% Viscose, 24% Polyamide, 5% Elastane

CARLISLE

GUIDES

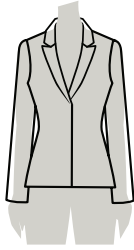


FIT

F

FITTED

Slim fit through bust, waist, and hip.



FITTED

C

CLASSIC

Generous fit through bust, waist, and hip.



CLASSIC

E

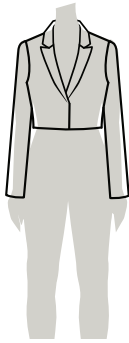
EASY

Relaxed fit through bust, waist, and hip.



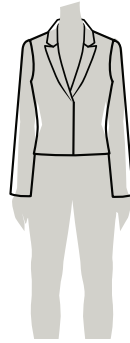
EASY

LENGTH



CROPPED

Hits above the hip bone.
20"



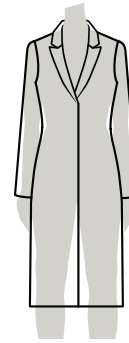
SHORT

Hits at high hip.
21"- 23"



HIP LENGTH

Hits at low hip.
24"- 26"



TOPPER

Hits below hip.
29" and up

ALL LENGTHS ARE MEASURED FROM THE HIGH POINT SHOULDER

C

CLASSIC

Generous fit through bust, waist, and hip



TEMPRANILLO

5-JK-3084

LENGTH: 19 1/2"

A	B	C	D	E	F
2	4	6	8	10	12

Black

Self: 100% Polyester Combo; 97% Cotton, 3% Spandex



OPERA

1-JK-3309

LENGTH: 22"

A	B	C	D	E	F
6	8	10	12	2	4

Black

70% Triacetate, 30% Polyester



PICTURESQUE

1-JK-2506

LENGTH: 22"

A	B	C	D	E	F
12	2	4	6	8	10

Ivory, Lilypad, Imperial Spice, Terracotta, Bittersweet, Camellia, Celandine, Green Ash

98% Cotton, 2% Spandex



LETIZIA

5-JK-3132

LENGTH: 23 1/4"

A	B	C	D	E	F
12	2	4	6	8	10

Golden Spice, Aragon, Black, Metallic Gold

62% Polyester, 32% Cotton, 3% Polyamide, 2% Viscose, 1% Metallic



CHERBOURG

5-JK-2659

LENGTH: 23 1/2"

A	B	C	D	E	F
4	6	8	10	12	2

Doeskin Melange, Celandine, Black, Ivory

98% Cotton, 2% Spandex



GRAND PRIX

5-JK-2566

LENGTH: 23 3/4"

A	B	C	D	E	F
6	8	10	12	2	4

Ivory, Black, Bittersweet, Camellia

Self: 63% Polyester, 34% Viscose, 3% Elastane, Combo: 85% Nylon, 12% Polyester, 3% Spandex



GOYA

5-JK-3070

LENGTH: 25"

A	B	C	D	E	F
4	6	8	10	4	2

Black

75% Acetate, 22% Polyamide, 3% Elastane



RIGHT BANK

1-JK-2622

LENGTH: 25"

A	B	C	D	E	F
10	12	2	4	6	8

Doeskin

73% Polyester, 23% Viscose, 3% Elastane



PONT NEUF

5-JK-2629

LENGTH: 25 1/2"

A	B	C	D	E	F
10	12	2	4	6	8

Doeskin, Lilypad, Sable, Green Ash, Smoke

78% Polyester, 17% Rayon, 3% Spandex



ALCAZAR

1-JK-3002

LENGTH: 26 1/2"

A	B	C	D	E	F
10	6	2	4	6	8

Ivory, Verbena, Gorse, Camellia, Golden Spice, Fern Green, Green Ash

98% Cotton, 2% Spandex



EL DORADO

1-JK-3025

LENGTH: 26 1/2"

A	B	C	D	E	F
8	10	2	2	4	6

Golden Spice

66% Linen, 32% Viscose, 2% Elastane



RAMBUTAN

1-JK-3055

LENGTH: 26 1/2"

A	B	C	D	E	F
6	8	10	4	2	4

Pink Yarrow

68% Polyester, 30% Cotton, 2% Elastane



TANAGER

1-JK-2982

LENGTH: 26 1/2"

A	B	C	D	E	F
6	8	10	8	2	4

Campanula

66% Linen, 32% Viscose, 2% Elastane



C

CLASSIC

Generous fit through bust, waist, and hip

CONTINUED



TUILERIES

1-JK-2537

LENGTH: 26 1/2"

A	B	C	D	E	F
8	10	12	2	4	6

Imperial Blue, Ivory, Doeskin, Sable, Camellia, Bug Bell, Lilypond, Green Ash, Green Eyes, Terracotta
Self: 51% Viscose, 36% Polyester, 11% Polyamide, 2% Elastane. Inside Piping Combo: 100% Silk



BOUCHER

1-JK-2521

LENGTH: 27"

A	B	C	D	E	F
8	10	12	2	4	6

Blue Bell, Doeskin, Green Ash, Green Eyes, Bronze Green
97% Cotton, 3% Spandex



DENEUVE

1-JK-2497

LENGTH: 27"

A	B	C	D	E	F
4	6	8	10	12	2

Ivory
50% Polyester, 44% Cotton, 5% Polyamide, 1% Metallic



PATISSERIE

1-JK-2625

LENGTH: 27"

A	B	C	D	E	F
2	4	6	8	10	12

Terracotta
61% Cotton, 36% Nylon, 3% Elastane



MYSTIC AURA

1-JK-2994

LENGTH: 27 1/2"

A	B	C	D	E	F
4	6	8	10	6	2

Verbena
51% Cotton, 44% Polyamide, 5% Elastane



PATIO

1-JK-3120

LENGTH: 28 1/2"

A	B	C	D	E	F
6	8	10	2	2	4

Aragon
78% Polyester, 22% Rayon



HYACINTH

5-JK-3076

LENGTH: 29 1/2"

A	B	C	D	E	F
2	4	6	8	10	10

Campanula
64% Triacetate, 36% Polyester, Exclusive Of Trim, Piping: 100% Viscose



CINEPHILE

5-JK-2599

LENGTH: 32 3/4"

A	B	C	D	E	F
4	6	8	10	12	2

Black
100% Genuine Leather

E

EASY

Relaxed fit through bust, waist, and hip.



AUDRAN

1-JK-2966

LENGTH: 19 1/4"

A	B	C	D	E	F
12	2	4	6	8	10

Black
Self: 100% Polyurethane, Combo: 70% Viscose, 25% Polyamide, 5% Spandex



IMMACULATE

1-JK-3157

LENGTH: 21 3/4"

A	B	C	D	E	F
8	10	12	2	4	6

White
66% Linen, 32% Viscose, 2% Elastane



MARAIS

1-JK-2703

LENGTH: 22"

A	B	C	D	E	F
6	8	10	12	2	4

Camellia, Bittersweet, Terracotta, Celandine
58% Cotton, 23% Polyester, 19% Acrylic



ALBA

1-JK-3125

LENGTH: 24 1/2"

A	B	C	D	E	F
2	4	6	8	10	10

Ivory, Campanula, Pink Yarrow, Aqua
41% Polyester, 39% Cotton, 13% Acrylic, 5% Other Fibers, 2% Polyamide, Exclusive Of Trim, Inside Piping Combo: 100% Viscose



PRADO

5-JK-3184

LENGTH: 24 1/2"

A	B	C	D	E	F
M	L	XS	S	S	M

Bosphorus, Fern Green, Blue Bell, Campanula, Pink Yarrow, Cerise, Plum Caspia, Black
94% Polyester, 6% Spandex



BAZAAR

1-JK-2620

LENGTH: 26"

A	B	C	D	E	F
2	4	6	8	10	12

Imperial Blue, Blue Bell
52% Recycled Polyester, 40% Polyester, 8% Elastane



CHARADE

5-JK-2553

LENGTH: 27 1/2"

A	B	C	D	E	F
8	10	12	2	4	6

Ivory, Doeskin, Camellia, Bittersweet, Dark Blue Bell, Imperial Blue, Black
98% Cotton, 2% Spandex



EXPLORER

5-JK-2514

LENGTH: 28 1/2"

A	B	C	D	E	F
2	4	6	8	10	12

Green Eyes
83% Cotton, 15% Lyocell, 2% Elastane



VEDETTE

1-JK-2626

LENGTH: 29"

A	B	C	D	E	F
12	2	4	6	8	10

Black
100% Silk



GREENWOOD

5-OW-3133

LENGTH: 30"

A	B	C	D	E	F
6	8	10	2	2	4

Green Eyes
100% Polyester



PIERROT

5-JK-2561

LENGTH: 30"

A	B	C	D	E	F
8	10	12	2	4	6

Bittersweet, Imperial Blue, Blue Bell, Camellia, Bright Peach, Green Ash, Ivory
100% Polyester



FIT

F

FITTED

Hugs the contours of the body; styles with sleeves have a smaller shoulder and higher armhole.

SF

SEMI FITTED

Follows the contours of the body, with a little ease at the waist. Sits on the shoulder.

C

CLASSIC

Not too slim, nor too loose. Fits the bust comfortably and the waist is not too shaped. Sits on the shoulder.

E

EASY

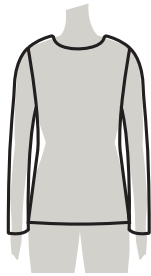
Relaxed fit through bust, waist and hips. Some styles may even have a lot of gathers and fullness.

O

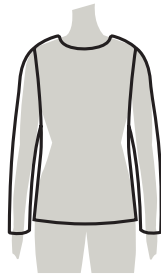
OVERSIZED

It is a very roomy, cozy style that is big overall.

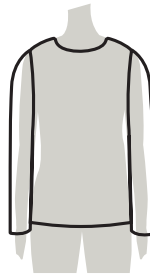
SILHOUETTES



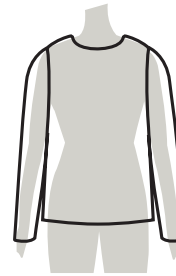
FITTED



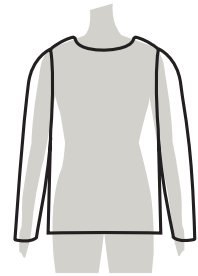
SEMI FITTED



CLASSIC



EASY



OVERSIZED

ALL LENGTHS ARE MEASURED FROM THE HIGH POINT SHOULDER

F

FITTED

Hugs the contours of the body; styles with sleeves have a smaller shoulder and higher armhole.



ANGLED-SHELL
1-KN-3158

LENGTH: 23"

A	B	C	D	E	F
L	S	M	L	S	M

Ivory

57% Viscose, 41% Nylon, 2% Spandex



SUNDOWN
5-KN-3072

LENGTH: 23"

A	B	C	D	E	F
L	S	M	L	S	M

Black

79% Viscose, 21% Nylon



PARASOL
5-KN-3131

LENGTH: 24 1/4"

A	B	C	D	E	F
S	L	M	S	L	M

Golden Spice

70% Cotton, 30% Silk



LOLA
5-KN-2602

LENGTH: 24 1/2"

A	B	C	D	E	F
M	L	S	M	L	S

Black

49% Viscose, 30% Polyester, 21% Nylon

SF

SEMI FITTED

Follows the contours of the body, with a little ease at the waist. Sits on the shoulder.



CUMIN
1-KN-3026

LENGTH: 21"

A	B	C	D	E	F
L	S	M	L	S	M

Golden Spice

66% Cotton, 34% Silk



ACACIA-SHELL
1-KN-3008

LENGTH: 22"

A	B	C	D	E	F
L	M	XL	S	L	XS

Fern Green

79% Viscose, 21% Nylon



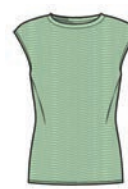
BELLFLOWER-SHELL
1-KN-3067

LENGTH: 22"

A	B	C	D	E	F
M	L	S	M	L	S

Campanula

71% BCI Cotton, 29% Nylon



ELYSIAN-SHELL
1-KN-2582

LENGTH: 22"

A	B	C	D	E	F
S	M	L	S	M	L

Green Ash

64% Silk, 31% Nylon, 5% Spandex



GIRANDOLE-SHELL
5-KN-2589

LENGTH: 22"

A	B	C	D	E	F
L	S	M	L	S	M

Celandine

60% Viscose, 23% Polyester, 15% Nylon, 2% Spandex



AROMATIC-SHELL
1-KN-2998

LENGTH: 22 1/2"

A	B	C	D	E	F
S	XS	M	L	S	M

Verbena

70% Cotton, 30% Silk



CARAVEL
5-KN-3110

LENGTH: 22 1/2"

A	B	C	D	E	F
XS	S	M	L	S	M

Black

70% Cotton, 20% Nylon, 10% Silk



TURRON-SHELL
1-KN-3123

LENGTH: 21"

A	B	C	D	E	F
M	S	L	XS	M	S

Dusty Aragon

70% Cotton, 30 Silk



APERITIF-SHELL
1-KN-2530

LENGTH: 23"

A	B	C	D	E	F
S	M	L	S	M	L

Platinum Heather, Terracotta, Bittersweet, Camellia

95% Cotton, 5% Cashmere



BLUSHING-SHELL
1-KN-3062

LENGTH: 23"

A	B	C	D	E	F
L	M	XS	L	M	XS

Pink Yarrow

66% Viscose, 34% Nylon



BOHEMIAN-SHELL
1-KN-2520

LENGTH: 23"

A	B	C	D	E	F
L	S	M	L	S	M

Black

48% Silk, 32% Cotton, 20% Nylon



CUISINE-SHELL
1-KN-2615

LENGTH: 23"

A	B	C	D	E	F
M	L	S	M	L	S

Terracotta

75% Silk, 22% Nylon, 3% Spandex



DAY FOR NIGHT-SHELL
1-KN-2559

LENGTH: 23"

A	B	C	D	E	F
M	L	XS	S	S	M

Ivory, Black

70% Cotton, 20% Nylon, 10% Silk



SF

SEMI FITTED

Follows the contours of the body, with a little ease at the waist. Sits on the shoulder.

CONTINUED



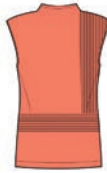
GODARD-SHELL
5-KN-2642

LENGTH: 23"

A	B	C	D	E	F
M	L	S	M	L	S

Bittersweet

62% Viscose, 38% Polyester



ILLUSION
5-KN-2644

LENGTH: 23"

A	B	C	D	E	F
L	S	M	L	S	M

Camellia

79% Viscose, 21% Nylon



ANNA KARINA-SHELL
5-KN-2597

LENGTH: 23 1/2"

A	B	C	D	E	F
S	M	L	S	M	L

Black, White

62% Viscose, 38% Polyester



DAY FOR NIGHT-CARDI
1-KN-2558

LENGTH: 23 1/2"

A	B	C	D	E	F
M	L	XS	S	S	M

Ivory, Black

70% Cotton, 20% Nylon, 10% Silk



EASY CHIC
5-KN-2577

LENGTH: 23 1/2"

A	B	C	D	E	F
M	L	S	M	L	S

Doeskin, Lillypad, Sable

53% Viscose, 45% Nylon, 2% Spandex



GOLDEN-SHELL
5-KN-3095

LENGTH: 23 1/2"

A	B	C	D	E	F
M	XS	S	M	XS	S

Black, Golden Spice

70% Viscose, 30% Nylon



PAINTED FERN
5-KN-2512

LENGTH: 23 1/2"

A	B	C	D	E	F
L	S	M	L	S	M

Ivory, Green Eyes, Lillypad

94% Silk, 6% Nylon



VALE
5-KN-2935

LENGTH: 23 1/2"

A	B	C	D	E	F
L	S	M	L	S	M

Dark Green Eyes

90% Cotton, 10% Nylon



ANGLED-CARDI
1-KN-3177

LENGTH: 24"

A	B	C	D	E	F
L	S	M	L	S	M

Ivory

57% Viscose, 41% Nylon, 2% Spandex



AVENUE-SHELL
1-KN-2613

LENGTH: 24"

A	B	C	D	E	F
M	L	S	M	L	S

Blue Bell

100% Cashmere Exclusive of Trim



LOUVRE-SHELL
1-KN-2920

LENGTH: 24"

A	B	C	D	E	F
S	M	S	M	S	M

Camellia

100% Cashmere Exclusive of Trim



PARAGON-BRN
1-KN-3327

LENGTH: 24"

A	B	C	D	E	F
S	XS	XL	L	M	M

Camellian

100% Suvin Cotton. Exclusive of Trims



PARAGON-PNK
1-KN-3328

LENGTH: 24"

A	B	C	D	E	F
M	S	XS	XL	L	L

Pink Yarrow

100% Suvin Cotton. Exclusive of Trims



PARAGON-BLU
1-KN-3326

LENGTH: 24"

A	B	C	D	E	F
XS	XL	L	M	S	S

Campanula

100% Suvin Cotton. Exclusive of Trims



PARAGON-GRN
1-KN-3329

LENGTH: 24"

A	B	C	D	E	F
L	M	S	XS	XL	XS

Fern Green

100% Suvin Cotton. Exclusive of Trims



PARAGON-PUR
1-KN-3330

LENGTH: 24"

A	B	C	D	E	F
XL	L	M	S	XS	XL

Verbena

100% Suvin Cotton. Exclusive of Trims



SUPREME
1-KN-2500

LENGTH: 24"

A	B	C	D	E	F
S	M	L	S	M	L

Blue Bell

97% Suvin Cotton, 3% Nylon

C

CLASSIC

Not too slim, nor too loose. Fits the bust comfortably and the waist is not too shaped. Sits on the shoulder.



BELLFLOWER-CARDI
1-KN-3126

LENGTH: 21 1/2"

A	B	C	D	E	F
XL	L	S	M	XS	L

Campanula

71% BCI Cotton, 29% Nylon



ACACIA-CARDI
1-KN-3007

LENGTH: 22"

A	B	C	D	E	F
L	M	XL	S	L	XS

Fern Green

79% Viscose, 21% Nylon



GIRANDOLE-CARDI
5-KN-2588

LENGTH: 22 1/2"

A	B	C	D	E	F
L	S	M	L	S	M

Celandine

60% Viscose, 23% Polyester, 15% Nylon, 2% Spandex



CUISINE-CARDI
1-KN-2921

LENGTH: 23"

A	B	C	D	E	F
M	L	XL	M	L	XL

Terracotta

83% Silk, 14% Nylon, 3% Spandex



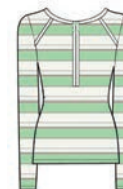
ELYSIAN-CARDI
1-KN-2581

LENGTH: 23"

A	B	C	D	E	F
S	M	L	S	M	L

Green Ash

64% Silk, 31% Nylon, 5% Spandex



MIME
1-KN-2583

LENGTH: 23"

A	B	C	D	E	F
M	L	S	M	L	S

Green Ash, Ivory, Deep Doeskin

100% Cotton



JOSEPHINE
1-KN-2505

LENGTH: 23 1/2"

A	B	C	D	E	F
S	M	L	S	M	L

Imperial Blue

85% Silk, 15% Nylon



BOHEMIAN-CARDI
1-KN-2519

LENGTH: 24"

A	B	C	D	E	F
L	S	M	L	S	M

Black

48% Silk, 32% Cotton, 20% Nylon



GODARD-CARDI
5-KN-2641

LENGTH: 24"

A	B	C	D	E	F
M	L	S	M	L	S

Bittersweet

62% Viscose, 38% Polyester



ART MODERNE
1-KN-2543

LENGTH: 24 1/2"

A	B	C	D	E	F
XL	S	L	XL	S	M

Ivory, Imperial Blue, Blue Bell, Deep Doeskin

55% Suvin Cotton, 27% Cotton, 18% Nylon



BLUSHING-CARDI
1-KN-3063

LENGTH: 24 1/2"

A	B	C	D	E	F
L	M	XS	L	M	XS

Pink Yarrow

66% Viscose, 34% Nylon



PARADISE
5-KN-2482

LENGTH: 25 1/2"

A	B	C	D	E	F
M	L	S	M	L	S

Green Eyes, Ivory, Camellia, Lillypad

100% Silk



AROMATIC-CARDI
1-KN-2997

LENGTH: 26"

A	B	C	D	E	F
S	XS	M	L	S	M

Verbena

70% Cotton, 30% Silk



C

CLASSIC

Not too slim, nor too loose. Fits the bust comfortably and the waist is not too shaped. Sits on the shoulder.

CONTINUED



TURRON-CARDI

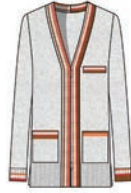
1-KN-3122

LENGTH: 26"

A	B	C	D	E	F
M	S	L	XS	M	S

Dusty Aragon

70% Cotton, 30 Silk



APERITIF-CARDI

1-KN-2529

LENGTH: 26 1/2"

A	B	C	D	E	F
S	M	L	S	M	L

Platinum Heather, Terracotta, Bittersweet, Camellia

84% Cotton, 10% Nylon, 4% Cashmere, 2% Spandex



VIBRATO

5-KN-3096

LENGTH: 28"

A	B	C	D	E	F
S	M	L	S	M	L

Black, White

100% Cotton



AVENUE-CARDI

1-KN-2612

LENGTH: 28 1/2"

A	B	C	D	E	F
M	L	S	M	L	S

Blue Bell

100% Cashmere Exclusive of Trim



LOUVRE-CARDI

1-KN-2919

LENGTH: 28 1/2"

A	B	C	D	E	F
S	M	S	M	S	M

Camellia

100% Cashmere Exclusive of Trim



MONET

5-KN-2922

LENGTH: 28 1/2"

A	B	C	D	E	F
S	XL	S	M	XL	L

Lilypad, Green Eyes, Dark Green Eyes, Black

Knit Shell: 43% Viscose, 31% Nylon, 26% Polyester. Woven Combo: 92% Silk, 8% Spandex



ANNA KARINA-CARDI

5-KN-2596

LENGTH: 29"

A	B	C	D	E	F
S	M	L	S	M	L

Black, White

62% Viscose, 38% Polyester



GOLDEN-CARDI

5-KN-3119

LENGTH: 34"

A	B	C	D	E	F
M	XS	S	M	XS	S

Black, Golden Spice

70% Viscose, 30% Nylon

E

EASY

Relaxed fit through bust, waist and hips. Some styles may even have a lot of gathers and fullness.



MARBELLA

1-KN-3018

LENGTH: 23"

A	B	C	D	E	F
XL	S	M	XL	S	M

Ivory, Golden Spice, Aragon

86% Cotton, 14% Nylon



VERDURE

5-KN-3134

LENGTH: 24 1/2"

A	B	C	D	E	F
L	S	M	L	S	M

Green Eyes

Self: 40% Linen, 33% Cotton, 27% Nylon. Camisole: 93% Cotton, 7% Spandex



AUTEUR

5-KN-2634

LENGTH: 25 1/2"

A	B	C	D	E	F
M	L	S	S	M	L

Sable

64% Cotton, 26% Nylon, 9% Silk, 1% Spandex

O

OVERSIZED

It is a very roomy, cozy style that is big overall.



BALANCE-BLK

5-KN-3086

LENGTH: 22"

A	B	C	D	E	F
M	L	S	M	L	S

Black

60% Organic Cotton, 40% Linen Combo: 93% Modal, 7% Spandex



BALANCE-WHT

5-KN-3178

LENGTH: 22"

A	B	C	D	E	F
S	M	L	S	M	L

Parchment

60% Organic Cotton, 40% Linen Combo: 93% Modal, 7% Spandex



PARASOL

5-KN-3130

LENGTH: 24 1/4"

A	B	C	D	E	F
S	L	M	S	L	M

Golden Spice

70% Cotton, 30% Silk



FIT

F

FITTED

Slim fit through bust, waist, and hip.

C

CLASSIC

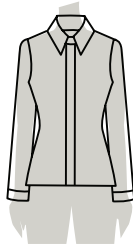
Generous fit through bust, waist, and hip.

E

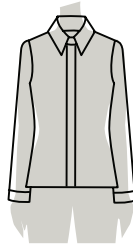
EASY

Relaxed fit through bust, waist, and hip.

SILHOUETTES



FITTED



CLASSIC



EASY

FIT

F

FITTED

Hugs the contours of the body; styles with sleeves have a smaller shoulder and higher armhole.

SF

SEMI FITTED

Follows the contours of the body, with a little ease at the waist. Sits on the shoulder.

C

CLASSIC

Not too slim, nor too loose. Fits the bust comfortably and the waist is not too shaped. Sits on the shoulder.

E

EASY

Relaxed fit through bust, waist and hips. Some styles may even have a lot of gathers and fullness.

O

OVERSIZED

It is a very roomy, cozy style that is big overall.

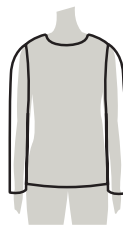
SILHOUETTES



FITTED



SEMI FITTED



CLASSIC



EASY



OVERSIZED

ALL LENGTHS ARE MEASURED FROM THE HIGH POINT SHOULDER



F

FITTED

Slim fit through bust, waist, and hip. Hugs the contours of the body; styles with sleeves have a smaller shoulder and higher armhole.



PARADIGM-BLK

1-TP-3325

LENGTH: 24 1/2"

Size chart for Paradigm-Blk

XS M L XL L M

Black

87% Nylon, 13% Spandex



PARADIGM-IVR

1-TP-3323

LENGTH: 24 1/2"

Size chart for Paradigm-Ivr

M L S M S XL

Quartz

87% Nylon, 13% Spandex



PARADIGM-NVY

1-TP-3324

LENGTH: 24 1/2"

Size chart for Paradigm-Nvy

L S M L XL XS

Navy

87% Nylon, 13% Spandex



PARADIGM-WHT

1-TP-3322

LENGTH: 24 1/2"

Size chart for Paradigm-Wht

S XL XS S M L

White

87% Nylon, 13% Spandex



TORY-BLK

1-TP-885

LENGTH: 25"

Size chart for Tory-Blk

ML XSS XSS ML ML XSS

Black

96% Nylon, 4% Spandex



TORY-ND

1-TP-884

LENGTH: 25"

Size chart for Tory-ND

XSS ML XSS ML XSS ML

Nude

96% Nylon, 4% Spandex



TORY-WHT

1-TP-163

LENGTH: 25"

Size chart for Tory-Wht

XSS XLX ML XSS XSS XLX

White

96% Nylon, 4% Spandex

SF

SEMI FITTED

Follows the contours of the body, with a little ease at the waist. Sits on the shoulder.



THALIA

1-TP-3069

LENGTH: 23 1/2"

Size chart for Thalia

M L S M L S

Campanula

95% Rayon, 5% Spandex

C

CLASSIC

Generous fit through bust, waist, and hip. Hugs the contours of the body; styles with sleeves have a smaller shoulder and higher armhole.



METRO

1-TP-2523

LENGTH: 22"

Size chart for Metro

4 6 8 10 12 2

Camellia, Bittersweet

58% Viscose, 42% Rayon



STREAM-GLD

1-TP-3181

LENGTH: 22"

Size chart for Stream-Gld

8 10 4 2 8 6

Golden Spice

100% Viscose



STREAM-WHT

1-TP-3170

LENGTH: 22"

Size chart for Stream-Wht

10 6 2 4 6 8

White

100% Viscose



FOUNTAIN

1-TP-2652

LENGTH: 23"

Size chart for Fountain

8 10 12 2 4 6

Imperial Blue

100% Silk



VERANDA

1-TP-3009

LENGTH: 23 1/2"

Size chart for Veranda

2 4 6 8 10 2

Ivory, Absinth Green, Verbena, Light Verdina, Golden Spice, Blue Bell, Campanula, Imperial Blue, Fern Green

92% Silk, 8% Spandex



CITADEL

1-TP-4424

LENGTH: 24"

Size chart for Citadel

6 8 10 12 2 4

Aragon, Golden Spice, Terracotta, Navy, White, Campanula, Camellia

95% Silk, 5% Spandex



HOLLYHOCK

1-TP-3268

LENGTH: 24 3/4"

Size chart for Hollyhock

2 4 6 8 10 12

Pink Yarrow

Front: 100% Silk Back: 95% Cotton, 5% Spandex



PARFUM

1-TP-2933

LENGTH: 25"

Size chart for Parfum

6 8 10 12 2 4

Ivory

97% Cotton, 3% Spandex



WATER LILIES

5-TP-2575

LENGTH: 25 1/2"

Size chart for Water Lilies

8 10 12 2 4 6

Lilypad, Green Eyes, Black

92% Silk, 8% Spandex



PETIT PALAIS

5-TP-2888

LENGTH: 25 3/4"

Size chart for Petit Palais

2 4 6 8 10 12

Lilypad, Camellia, Green Ash, Green Eyes, Black, Ivory, Terracotta

51% Cotton, 40% Silk, 9% Spandex



PONT NEUF

5-TP-2637

LENGTH: 25 3/4"

Size chart for Pont Neuf

10 12 2 4 6 8

Doeskin, Lilypad, Sable, Green Ash

78% Polyester, 17% Rayon, 5% Spandex



BARBIANA

5-TP-3164

LENGTH: 26"

Size chart for Barbiana

8 10 4 2 4 6

White

98% Cotton, 2% Spandex



EMMA-BLK

5-TP-2259

LENGTH: 26"

Size chart for Emma-Blk

M S L M S S

Black

100% Cotton



C

CLASSIC

Generous fit through bust, waist, and hip. Hugs the contours of the body; styles with sleeves have a smaller shoulder and higher armhole.

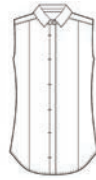
CONTINUED



GWEN-BLK
1-TP-780
LENGTH: 26"

A	B	C	D	E	F
2	12	8	6	6	6

Black
98% Cotton, 2% Spandex



GWEN-WHT
1-TP-161
LENGTH: 26"

A	B	C	D	E	F
6	6	2	12	8	12

White
98% Cotton, 2% Spandex



PARC MONCEAU
1-TP-2648
LENGTH: 26"

A	B	C	D	E	F
2	4	6	8	10	12

Camellia, Ivory, Terracotta
92% Silk, 8% Spandex



TROCADERO
5-TP-2568
LENGTH: 26"

A	B	C	D	E	F
6	8	10	12	2	4

Lilypad
97% Cotton, 3% Spandex



ALDER
1-TP-3104
LENGTH: 26 1/2"

A	B	C	D	E	F
10	8	2	4	6	8

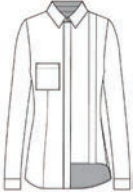
Fern Green
94% Silk, 6% Spandex



PARADE
5-TP-3127
LENGTH: 26 1/2"

A	B	C	D	E	F
4	2	4	6	8	10

Black, White, Golden Spice, Fern Green, Campanula, Pink Yarrow, Cerise, Alpine Green
54% Viscose, 46% Rayon



CACHET
5-TP-2638
LENGTH: 27"

A	B	C	D	E	F
12	2	4	6	8	10

White
97% Cotton, 3% Spandex



GWEN-LAV
1-TP-2995
LENGTH: 27"

A	B	C	D	E	F
6	8	10	10	2	4

Verbena
98% Cotton, 2% Spandex



TABERNAS-GLD
1-TP-3054
LENGTH: 27"

A	B	C	D	E	F
4	6	8	10	12	2

Golden Spice
Self: 100% Cotton, Embroidery Combo: 100% Cotton



TABERNAS-WHT
1-TP-3160
LENGTH: 27"

A	B	C	D	E	F
10	2	4	6	8	10

White
Self: 100% Cotton, Embroidery Combo: 100% Cotton



GALERIE
1-TP-2650
LENGTH: 28 1/4"

A	B	C	D	E	F
8	10	12	2	4	6

Ivory, White, Light Doestkin, Doestkin, Bright Peach, Dark Bright Peach, Parfait Pink, Lilypad, Green Eyes, Green Ash
95% Silk, 5% Spandex

E

EASY

Relaxed fit through bust, waist, and hip. Some styles may even have a lot of gathers and fullness.



MENORCA
1-TP-3065
LENGTH: 20"

A	B	C	D	E	F
6	2	4	6	8	10

White, Campanula
100% Polyester, Cami: 97% Polyester, 3% Spandex



STARLET
1-TP-2507
LENGTH: 22"

A	B	C	D	E	F
12	2	4	6	8	10

White
97% Cotton, 3% Spandex



SOLARIUM
1-TP-3000
LENGTH: 23"

A	B	C	D	E	F
8	10	4	2	4	6

Verbena
100% Polyester



FANDANGO
1-TP-3068
LENGTH: 24"

A	B	C	D	E	F
4	6	8	10	2	2

White, Tanager Turquoise, Campanula, Pink Yarrow
95% Silk, 5% Spandex



RADIANT
5-TP-2639
LENGTH: 24"

A	B	C	D	E	F
12	2	4	6	8	10

Celandine
100% Silk



ALABASTER
1-TP-2528
LENGTH: 24 1/2"

A	B	C	D	E	F
8	10	12	2	4	6

Ivory
67% Viscose, 28% Nylon, 5% Spandex



IBIZA
1-TP-3005
LENGTH: 24 1/2"

A	B	C	D	E	F
10	2	2	4	6	8

White, Campanula, Pink Yarrow, Navy
97% Cotton, 3% Spandex



RIVOLI
1-TP-2515
LENGTH: 25"

A	B	C	D	E	F
L	S	M	L	S	M

Ivory, Green Eyes, Green Ash, Bright Peach, Terracotta, Doestkin, Camellia
Shell: 97% Silk, 3% Spandex, Combo: 93% Cotton, 7% Spandex



TISSOT
1-TP-2645
LENGTH: 25 1/2"

A	B	C	D	E	F
6	8	10	12	2	2

Imperial Blue, Blue Bell
97% Cotton, 3% Spandex



EMILY
1-TP-2501
LENGTH: 26"

A	B	C	D	E	F
S	M	L	S	M	L

Camellia
58% Cotton, 39% Polyester, 3% Spandex



AMOUR
5-TP-2632
LENGTH: 26 1/2"

A	B	C	D	E	F
9-Jan	12	2	4	5-Jan	7-Jan

Bittersweet
75% Silk, 25% Viscose



BEAMING
1-TP-3022
LENGTH: 26 1/2"

A	B	C	D	E	F
6	2	4	6	8	10

Ivory, Golden Spice, Terracotta, Fern Green, Green Eyes, Honeydew, Campanula, Tanager Turquoise, Pink
92% Silk, 8% Spandex



TRUFFLE
1-TP-2934
LENGTH: 26 1/2"

A	B	C	D	E	F
4	6	8	10	12	2

Doestkin
92% Silk, 8% Spandex



PROMENADE
1-TP-2574
LENGTH: 27"

A	B	C	D	E	F
4	6	8	10	12	2

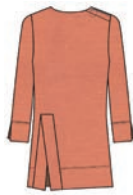
Green Ash, Forest Shade, Green Eyes, Lilypad, Doestkin, Camellia, Ivory
92% Silk, 8% Spandex



ECHO
1-TP-3159
LENGTH: 27"

A	B	C	D	E	F
2	4	6	8	10	8

White
75% Silk, 25% Viscose



ORANGERY
5-TP-2631
LENGTH: 28"

A	B	C	D	E	F
M	L	S	M	L	S

Camellia
71% Cotton, 25% Polyester, 4% Spandex



PALISADE
5-TP-3085
LENGTH: 28"

A	B	C	D	E	F
6	8	10	6	2	4

White
98% Cotton, 2% Spandex



ORLY
5-TP-2587
LENGTH: 28 1/2"

A	B	C	D	E	F
2	4	6	8	10	12

Doestkin, Celandine, Black
97% Silk, 3% Spandex



ROCOCO
1-TP-2893
LENGTH: 28 1/2"

A	B	C	D	E	F
10	12	2	4	6	8

Blue Bell, Doestkin, Green Ash, Green Eyes, Bronze Green
100% Silk



FIT

F

FITTED

Slim through bust, waist, and hip.

C

CLASSIC

Generous fit through bust, waist, and hip.

E

EASY

Relaxed fit through bust, waist, and hip.

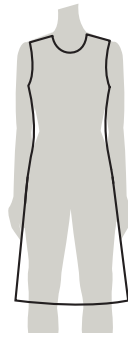
SILHOUETTES



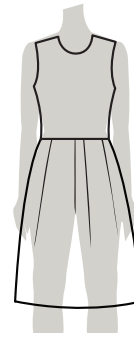
SHEATH



SHIFT



A-LINE



FIT & FLARE

ALL LENGTHS ARE MEASURED FROM THE HIGH POINT SHOULDER

F

FITTED

Slim through bust, waist, and hip.



COUNTESS
1-DR-2614

DRESS: 41" :SKIRT: 24"
UNLINED : SHEATH SHAPE

A	B	C	D	E	F
M	L	S	M	L	S

Imperial Blue

50% Organic Cotton, 23% Modal, 18% Polyester, 9% Nylon



BREATHLESS
5-DR-2593

DRESS: 42" :SKIRT: 26"
UNLINED : A-LINE SHAPE

A	B	C	D	E	F
S	M	L	S	M	L

Black, Ivory

49% Viscose, 30% Polyester, 21% Nylon

SF

SEMI FITTED

Follows the contours of the body, with a little ease at the waist.



OPERA
1-DR-2592

DRESS: 41" :SKIRT: 24"
LINED : SHEATH SHAPE

A	B	C	D	E	F
6	8	10	12	2	4

Black

70% Triacetate, 30% Polyester



CLAIRE
5-DR-2640

DRESS: 44" :SKIRT: 27"
LINED : SHEATH SHAPE

A	B	C	D	E	F
12	2	4	6	8	10

Celandine, Black

67% Viscose, 28% Polyamide, 5% Elastane



TEMPRANILLO
5-DR-3083

DRESS: 50" :SKIRT: 32 5/8"
UNLINED : FIT & FLARE SHAPE

A	B	C	D	E	F
10	12	2	4	6	8

Black

Bodice: 65% Viscose, 30% Polyester, 5% Elastane; Skirt: 97% Cotton, 3% Spandex; Lace Combo: 100% Polyester

C

CLASSIC

Generous fit through bust, waist, and hip.



LUXEMBOURG
5-DR-2600

DRESS: 39 1/2" :SKIRT: 22 1/2"
UNLINED : A-LINE SHAPE

A	B	C	D	E	F
4	6	8	10	12	2

Doeskin, Celandine, Black

94% Polyester, 6% Spandex



RAMBUTAN
1-DR-3056

DRESS: 39 1/2" :SKIRT: 22 3/4"
LINED : SHEATH SHAPE

A	B	C	D	E	F
4	6	8	10	8	2

Pink Yarrow

68% Polyester, 30% Cotton, 2% Elastane



CARBONADO
1-DR-3176

DRESS: 40 3/4" :SKIRT: 24"
UNLINED : A-LINE SHAPE

A	B	C	D	E	F
8	10	12	2	4	6

Black

65% Viscose, 30% Polyamide, 5% Elastane



MUSCADET
1-DR-2713

DRESS: 42" :SKIRT: 25"
LINED : A-LINE SHAPE

A	B	C	D	E	F
10	12	2	4	6	8

Ivory

67% Cotton, 28% Polyester, 5% Elastane



PRINTEMPS
1-DR-2923

DRESS: 43 1/2" :SKIRT: 26 5/8"
LINED : A-LINE SHAPE

A	B	C	D	E	F
4	6	8	10	12	2

Imperial Blue, Blue Bell, Green Ash, White, Parfait Pink, Lilypad, Black

95% Silk, 5% Spandex



SOLARIUM
1-DR-2999

DRESS: 43 3/4" :SKIRT: 27"
LINED : A-LINE SHAPE

A	B	C	D	E	F
2	4	6	8	10	6

Verbena

100% Polyester



C

CLASSIC

Generous fit through bust, waist, and hip.

CONTINUED



GIGI
1-DR-2496
DRESS: 44" :SKIRT: 27"
LINED : A-LINE SHAPE
A B C D E F
4 6 8 10 12 2
Ivory
Self: 67% Cotton, 28% Polyester, 5% Elastane. Combo: 50% Polyester, 44% Cotton, 5% Polyamide, 1% Metallic



TANAGER
1-DR-3109
DRESS: 44" :SKIRT: 28"
LINED : A-LINE SHAPE
A B C D E F
6 8 10 12 2 4
Campanula
66% Linen, 32% Viscose, 2% Elastane



PENELOPE
1-DR-3064
DRESS: 45" :SKIRT: 27 3/4"
LINED : FIT & FLARE SHAPE
A B C D E F
8 10 12 2 4 6
White, Pink Yarrow, Campanula, Navy
97% Cotton, 3% Spandex



EMMANUELLE
5-DR-2591
DRESS: 46" :SKIRT: 28 1/2"
LINED : A-LINE SHAPE
A B C D E F
2 4 6 8 10 12
Dark Doeskin, Ivory, Black
97% Cotton, 3% Spandex



GARDEN PARTY
5-DR-3091
DRESS: 46" :SKIRT: 28 3/4"
NONE : A-LINE SHAPE
A B C D E F
12 2 4 6 8 10 2 4 6 8 10 12
Black, Campanula, Pink Yarrow, Fern Green
100% Polyester



AUDRAN
5-DR-2636
DRESS: 46 1/2" :SKIRT: 29"
LINED : A-LINE SHAPE
A B C D E F
2 4 6 8 10 12
Black
Self: 100% Polyurethane. Combo: 70% Viscose, 25% Polyamide, 5% Spandex



ESMERALDA
1-DR-3077
DRESS: 47" :SKIRT: 30 1/2"
LINED : SHEATH SHAPE
A B C D E F
10 12 2 4 6 8
Fern Green
96% Polyester, 4% Spandex



BAZAAR
1-DR-2536
DRESS: 47 1/2" :SKIRT: 30"
LINED : SHEATH SHAPE
A B C D E F
6 8 10 12 2 4
Blue Bell
52% Recycled Polyester, 40% Polyester, 8% Elastane



CLEO
1-DR-2565
DRESS: 47 1/2" :SKIRT: 30 3/4"
LINED : A-LINE SHAPE
A B C D E F
10 12 2 4 6 8
White, Black
95% Polyester, 5% Spandex



PALAIS ROYAL
5-DR-2495
DRESS: 48" :SKIRT: 31"
SLIP : A-LINE SHAPE
A B C D E F
8 10 12 2 4 6
Bittersweet
Shell & Slip: 100% Polyester. Combo: 75% Silk, 25% Viscose



PICASSO
5-DR-3092
DRESS: 48" :SKIRT: 31"
LINED : A-LINE SHAPE
A B C D E F
2 4 6 8 10 12
Black, Ivory, Golden Spice, Terracotta, Amber Green, Green Eyes
51% Cotton, 40% Silk, 9% Spandex



GIVERNY
1-DR-2580
DRESS: 48 1/2" :SKIRT: 31"
UNLINED : A-LINE SHAPE
A B C D E F
10 12 2 4 6 8
Ivory, Parfait, Pink, Camellia, Green Ash, Green Eyes, Lillypad, Lelandine, Imperial Blue, Blue Bell, Warming Glory
53% Cotton, 42% Viscose, 5% Elastane

E

EASY

Relaxed fit through bust, waist, and hip



LUDIVINE
5-DR-2924
DRESS: 40 1/4" :SKIRT: 22 3/4"
LINED : WEDGE SHAPE
A B C D E F
8 10 12 2 4 6
Black, Green Eyes
Self: 100% Polyurethane. Combo: 59% Lyocell, 38% Cotton, 3% Spandex



HENNA
1-DR-3019
DRESS: 41" :SKIRT: 26"
SLIP : SHIFT SHAPE
A B C D E F
S M L M S L
Terracotta
62% Viscose, 38% Polyester Exclusive of Trims



JARDINIERE
5-DR-2513
DRESS: 45" :SKIRT: 28"
LINED : A-LINE SHAPE
A B C D E F
6 8 10 12 2 4
Lillypad, Camellia, Green Ash, Green Eyes, Black, Ivory, Terracotta
95% Silk, 5% Spandex



FIT

L**LEGGINGS**

Follow body contours from waist through the leg opening.

S**SLIM**

Slimmer through the hip and thigh.

C**CLASSIC**

Straight through the hip and thigh.

E**EASY**

Relaxed through the hip and thigh.

WAIST

N**NATURAL**

Sits at the natural waistline.

R**REGULAR**

Sits 1" below the natural waistline.

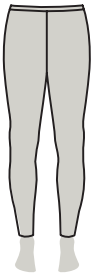
L**LOW**

Sits 2" below the natural waistline.

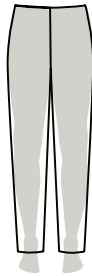
H**HIGH**

Sits above the natural waistline.

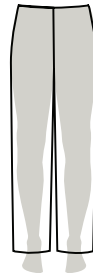
LEG

**SKINNY**

Tighter fit through thigh, knee and leg opening.

**SLIM**

Slim through thigh, knee and leg opening.

**STRAIGHT**

Straight through thigh, knee and leg opening.

**BOOTCUT**

Straight or slim through thigh and knee and wider at leg opening.

**WIDE**

Full fit through thigh, knee and leg opening.

STYLE

EVA

The Eva pants are a pull-on with a leggings fit.

LINDA

Linda pants offer a slim fit through hips and thighs, and sit 1" below the natural waist.

GISELE

Gisele pants offer a slim fit through hips and thighs, and sit 2" below the natural waist.

STEPHANIE

Stephanie pants offer a slim fit through hips and thighs, and sit 3" below the natural waist.

NAOMI

Naomi pants offer a straight fit through hips and thighs, and sit 1" above the natural waist.

BROOKE

Brooke pants offer a straight fit through hips and thighs, and sit 1" below the natural waist.

CHRISTY

Christy pants offer a classic fit, straight through hips and thighs, and sit 1" below the natural waist.

NIKI

Niki is an easy fit pull-on, loose through the hips and thighs, and sits 1" below the natural waist.

ELLE

Elle pants offer an easy fit, loose through hips and thighs, and sits 1/2" above the natural waist.

COCO

Coco pants offer a slim fit, knit, pull on, slim through the hips and thighs, and sits 1" below the natural waist.

EVA

Leggings Fit

Sits at Natural Waist
Tight Through Hip and Thigh

**HORSESHOE****5-PT-734**

INSEAM: 29"
RISE: 10 1/2"
LEG: 10 3/4"

A	B	C	D	E	F
2	4	8	10	12	6

Black
Body: 47% Cotton, 46% Modal, 7% Elastane, Corbax, 100% Genuine Leather

**SOHO-BLK****5-PT-107**

INSEAM: 29"
RISE: 10 1/2"
LEG: 11 1/2"

A	B	C	D	E	F

Black
65% Rayon, 32% Nylon, 3% Spandex

**SOHO-NVY****5-PT-961**

INSEAM: 29"
RISE: 10 1/2"
LEG: 11 1/2"

A	B	C	D	E	F
8	2	12	6	4	10

Navy
65% Rayon, 32% Nylon, 3% Spandex



BROOKE

Classic Fit.

Sits 1" Below Waist.
Straight Through Hip
and Thigh.



CALATRAVA
5-PT-3136

INSEAM: 32" EXTRA-WIDE LEG FLY-FRONT
RISE: 10 1/2" LEG: 24"

A	B	C	D	E	F
12	2	4	6	8	10

White

53% Cotton, 45% Lyocell, 2% Spandex



RAVISHING-BGE
1-PT-2931

INSEAM: 32" TAPERED LEG FLY-FRONT
RISE: 10 1/2" LEG: 13 3/4"

A	B	C	D	E	F
10	12	2	4	6	8

Nomad

96% Cotton, 4% Spandex



RAVISHING-BLK
1-PT-2932

INSEAM: 32" TAPERED LEG FLY-FRONT
RISE: 10 1/2" LEG: 13 3/4"

A	B	C	D	E	F
6	8	10	12	2	4

Black

96% Cotton, 4% Spandex



RAVISHING-WHT
1-PT-2955

INSEAM: 32" TAPERED LEG FLY-FRONT
RISE: 10 1/2" LEG: 13 3/4"

A	B	C	D	E	F
2	4	6	8	10	12

White

75% Cotton, 13% Lyocell, 9% Rayon, 3% Spandex



FLAMENCO
1-PT-3162

INSEAM: 34" STRAIGHT LEG FLY-FRONT
RISE: 10 1/4" LEG: 14 3/4"

A	B	C	D	E	F
4	6	8	10	6	2

Ivory, Blazing Orange, Campella, Parfait Pink, Pink Yarrow, Lefjoe, Campanula, Imperial Blue, Green Ash, Green Eyes.

96% Cotton, 4% Spandex



INSPIRATION
5-PT-3135

INSEAM: 34" STRAIGHT LEG FLY-FRONT
RISE: 10 1/4" LEG: 14 3/4"

A	B	C	D	E	F
8	10	12	2	4	6

Black, Ivory, Golden Spice, Terracotta, Green Eyes, Amber Green

96% Cotton, 4% Spandex



MADELEINE
1-PT-2707

INSEAM: 34" WIDE LEG FLY-FRONT
RISE: 10 1/2" LEG: 22"

A	B	C	D	E	F
4	6	2	8	12	10

White

75% Cotton, 13% Lyocell, 9% Rayon, 3% Spandex



SAINT MICHEL
1-PT-2544

INSEAM: 34" WIDE LEG FLY-FRONT
RISE: 10 1/2" LEG: 19"

A	B	C	D	E	F
8	2	10	12	6	4

Blue Bell

96% Cotton, 4% Spandex



SUNNY
5-PT-2956

INSEAM: 34" BOOTCUT LEG FLY-FRONT
RISE: 10 1/2" LEG: 19"

A	B	C	D	E	F
12	10	6	2	4	8

Celandine

96% Cotton, 4% Spandex

CHRISTY

Classic Fit.

Sits 1" Below Waist.
Straight Through Hip
and Thigh.



MACARON
5-PT-1075

INSEAM: 14" WIDE LEG FLY-FRONT
RISE: 10 3/4" LEG: 24"

A	B	C	D	E	F
4	10	4	10	14	12

Biscotti

70% Polyester, 25% Rayon, 5% Spandex



PARADE
5-PT-3074

INSEAM: 30" WIDE LEG PULL-ON
RISE: 11 1/2" LEG: 23"

A	B	C	D	E	F
2	2	4	6	8	10

Black, White, Golden Spice, Fern Green, Campanula, Pink Yarrow

54% Viscose, 46% Rayon



EL DORADO
1-PT-3024

INSEAM: 32" STRAIGHT LEG FLY-FRONT
RISE: 10 1/4" LEG: 17 1/2"

A	B	C	D	E	F
8	10	2	2	4	6

Golden Spice

66% Linen, 32% Viscose, 2% Elastane



RIGHT BANK
1-PT-2624

INSEAM: 32" SLIM LEG SIDE ZIPPER
RISE: 10 5/8" LEG: 13 1/2"

A	B	C	D	E	F
10	12	2	4	6	8

Doeskin

72% Polyester, 23% Viscose, 5% Elastane



HYACINTH
5-PT-3128

INSEAM: 34" EXTRA-WIDE LEG SIDE ZIPPER
RISE: 10 3/4" LEG: 22"

A	B	C	D	E	F
2	4	6	8	10	10

Campanula

64% Triacetate, 36% Polyester



IMPRESSION
5-PT-2570

INSEAM: 34" BOOTCUT LEG SIDE ZIPPER
RISE: 10 1/2" LEG: 20"

A	B	C	D	E	F
2	4	6	8	10	12

Lilypad

96% Polyester, 4% Spandex



TANAGER
1-PT-3094

INSEAM: 34" WIDE LEG FLY-FRONT
RISE: 10 1/4" LEG: 22"

A	B	C	D	E	F
6	8	10	8	2	4

Campanula

66% Linen, 32% Viscose, 2% Elastane

COCO

Slim Fit.

Sits 1" Below Waist.
Slim Through Hip and
Thigh.



APERITIF
1-PT-2531

INSEAM: 28" SKINNY LEG PULL-ON
RISE: 11" LEG: 9"

A	B	C	D	E	F
M	L	S	M	L	S

Platinum Heather, Terracotta, Ivory

84% Cotton, 10% Nylon, 4% Cashmere, 2% Spandex



AUTEUR
5-PT-2635

INSEAM: 29" STRAIGHT LEG PULL-ON
RISE: 11 1/2" LEG: 26"

A	B	C	D	E	F
S	M	L	S	M	L

Sable

69% Cotton, 21% Nylon, 10% Silk



VIBRATO
5-PT-3097

INSEAM: 29" EXTRA-WIDE LEG PULL-ON
RISE: 9 1/2" LEG: 24"

A	B	C	D	E	F
S	M	L	S	M	L

Black

83% Cotton, 17% Nylon



ELLE

Easy Fit. Sits At The Natural Waist. Loose Through Hip And Thigh.



EXPLORER 5-PT-2516 STRAIGHT LEG FLY-FRONT. INSEAM: 31" RISE: 11 1/2" LEG: 16 1/2". Size chart and fabric: 83% Cotton, 15% Lyocell, 2% Elastane.



FINESSE-BLK 5-PT-2993 STRAIGHT LEG FLY-FRONT. INSEAM: 32" RISE: 11 3/4" LEG: 15". Size chart and fabric: 96% Polyester, 4% Spandex.



FINESSE-WHT 5-PT-3239 STRAIGHT LEG FLY-FRONT. INSEAM: 32" RISE: 11 3/4" LEG: 15". Size chart and fabric: 96% Polyester, 4% Spandex.



MATINEE 1-PT-2502 ULTRA-WIDE LEG PULL-ON. INSEAM: 32" RISE: 11 1/4" LEG: 25". Size chart and fabric: 58% Cotton, 39% Polyester, 3% Spandex.



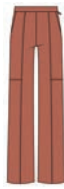
OPERA 1-PT-2766 ULTRA-WIDE LEG PULL-ON. INSEAM: 32" RISE: 11 1/4" LEG: 24". Size chart and fabric: 70% Triacetate, 30% Polyester.



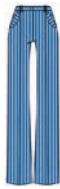
BAZAAR 1-PT-2619 ULTRA-WIDE LEG SIDE ZIPPER. INSEAM: 34" RISE: 11 1/2" LEG: 22". Size chart and fabric: 52% Recycled Polyester, 40% Polyester, 8% Elastane.



GHOST ORCHID 5-PT-1317 WIDE LEG FLY-FRONT. INSEAM: 34" RISE: 11 1/4" LEG: 25". Size chart and fabric: 70% Polyester, 25% Rayon, 5% Spandex.



PATIO 1-PT-3013 WIDE LEG SIDE ZIPPER. INSEAM: 34" RISE: 11 1/4" LEG: 21". Size chart and fabric: 78% Polyester, 22% Rayon.



TISSOT 1-PT-2706 ULTRA-WIDE LEG FLY-FRONT. INSEAM: 34" RISE: 11 1/4" LEG: 22 1/2". Size chart and fabric: 97% Cotton, 3% Spandex.



GISELE

Slim Fit. Sits 2" Below Waist. Slim Through Hip and Thigh.

FANTASY 1-PT-2492 SLIM LEG FLY-FRONT. INSEAM: 32" RISE: 10 1/2" LEG: 13 1/4". Size chart and fabric: 96% Cotton, 4% Spandex.



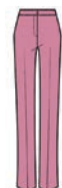
ALCAZAR 1-PT-3105 STRAIGHT LEG FLY-FRONT. INSEAM: 33" RISE: 10" LEG: 15". Size chart and fabric: 98% Cotton, 2% Spandex.



SIGNORET 5-PT-2584 STRAIGHT LEG FLY-FRONT. INSEAM: 32" RISE: 12 1/4" LEG: 14". Size chart and fabric: 95% Polyester, 5% Elastane.



COUTURE 1-PT-2499 ULTRA-WIDE LEG FLY-FRONT. INSEAM: 34" RISE: 12 1/4" LEG: 24". Size chart and fabric: Shell: 72% Polyester, 23% Viscose, 5% Elastane. Lining: 97% Polyester, 3% Spandex.



FAIRFAX-PNK 1-PT-706 WIDE LEG FLY-FRONT. INSEAM: 34" RISE: 12" LEG: 20 1/2". Size chart and fabric: 69% Cotton, 29% Lyocell, 2% Elastane.



ORANGERY 5-PT-2633 SKINNY LEG PULL-ON. INSEAM: 30" RISE: 10 1/2" LEG: 11 1/2". Size chart and fabric: 71% Cotton, 25% Polyester, 4% Spandex.



GRAND PRIX 5-PT-2567 WIDE LEG PULL-ON. INSEAM: 34" RISE: 10 1/2" LEG: 20". Size chart and fabric: 63% Polyester, 34% Viscose, 3% Elastane.



PROMENADE 1-PT-2576 ULTRA-WIDE LEG PULL-ON. INSEAM: 34" RISE: 10 1/2" LEG: 24". Size chart and fabric: 92% Silk, 8% Spandex.

NIKI

Easy Fit. Sits 1" Below Waist. Loose Through Hip and Thigh.



LINDA

Slim Fit.

Sits 1" Below Waist.
Slim Through Hip and Thigh.



JAUNT-BLK
1-PT-3269

INSEAM: 14" RISE: 10 1/2" LEG: 29 1/2" EXTRA-WIDE LEG FLY-FRONT

A	B	C	D	E	F
10	10	2	4	6	8

Black

66% Linen, 32% Viscose, 2% Elastane



JAUNT-WHT
1-PT-2618

INSEAM: 14" RISE: 10 1/2" LEG: 29 1/2" EXTRA-WIDE LEG FLY-FRONT

A	B	C	D	E	F
2	4	6	8	10	10

White

66% Linen, 32% Viscose, 2% Elastane



BOUTIQUE
5-PT-2557

INSEAM: 29" RISE: 10 1/4" LEG: 11 1/2" SKINNY LEG SIDE ZIPPER

A	B	C	D	E	F
6	8	10	12	2	4

Black

97% Cotton, 3% Spandex



DELPHINE
5-PT-2925

INSEAM: 32" RISE: 10 1/4" LEG: 14" SLIM LEG SIDE ZIPPER

A	B	C	D	E	F
12	2	4	6	8	10

Black

92% Polyester, 8% Spandex



MYSTIC AURA
1-PT-3006

INSEAM: 32" RISE: 10 1/2" LEG: 13 1/2" SLIM LEG FLY-FRONT

A	B	C	D	E	F
4	6	8	10	6	2

Verbena

51% Cotton, 44% Polyamide, 5% Elastane



SWIFT-GRN
1-PT-3003

INSEAM: 32" RISE: 10 1/2" LEG: 12 3/4" SLIM LEG FLY-FRONT

A	B	C	D	E	F
8	10	8	2	4	6

Fern Green

96% Polyester, 4% Spandex



TARTINE
5-PT-2555

INSEAM: 32" RISE: 10 1/2" LEG: 18 1/2" STRAIGHT LEG SIDE ZIPPER

A	B	C	D	E	F
10	12	2	4	6	8

Bittersweet

98% Cotton, 2% Spandex



BASTILLE
1-PT-2889

INSEAM: 34" RISE: 10 1/8" LEG: 16 1/2" STRAIGHT LEG SIDE ZIPPER

A	B	C	D	E	F
10	12	2	4	6	8

Camellia, Bittersweet, Terracotta, Celandine

97% Cotton, 3% Spandex



BEAUX-ARTS
1-PT-2511

INSEAM: 34" RISE: 10 1/2" LEG: 18" STRAIGHT LEG FLY-FRONT

A	B	C	D	E	F
2	4	6	8	10	12

Imperial Blue

52% Recycled Polyester, 40% Polyester, 8% Elastane



FOLIE
5-PT-2603

INSEAM: 34" RISE: 10 3/8" LEG: 17 1/2" STRAIGHT LEG NONE

A	B	C	D	E	F
4	6	8	10	12	2

Sable

91% Polyester, 9% Elastane



NIKITA-BLK
5-PT-852

INSEAM: 34" RISE: 10 1/4" LEG: 17 1/2" STRAIGHT LEG PULL-ON

A	B	C	D	E	F
6	8	4	0	6	8

Black

70% Viscose, 26% Polyamide, 4% Spandex



NIKITA-CML
1-PT-2389

INSEAM: 34" RISE: 10 1/4" LEG: 17 1/2" STRAIGHT LEG PULL-ON

A	B	C	D	E	F
4	6	10	12	14	0

Warm Camel

71% Viscose, 24% Polyamide, 5% Elastane



NIKITA-MEL
5-PT-769

INSEAM: 34" RISE: 10 1/4" LEG: 17 1/2" STRAIGHT LEG PULL-ON

A	B	C	D	E	F
10	0	2	4	2	12

Charcoal

70% Viscose, 25% Polyamide, 5% Elastane



NIKITA-NVY
5-PT-1244

INSEAM: 34" RISE: 10 1/4" LEG: 17 1/2" STRAIGHT LEG PULL-ON

A	B	C	D	E	F
0	14	6	8	10	4

Navy

71% Viscose, 24% Polyamide, 5% Elastane



PATISSERIE
1-PT-2705

INSEAM: 34" RISE: 10 1/8" LEG: 17 1/2" STRAIGHT LEG SIDE ZIPPER

A	B	C	D	E	F
2	4	6	8	10	12

Terracotta

61% Cotton, 36% Nylon, 3% Elastane



PIAF
5-PT-2595

INSEAM: 34" RISE: 10 1/2" LEG: 19 1/2" WIDE LEG FLY-FRONT

A	B	C	D	E	F
8	10	12	2	4	6

Doeskin, Sable, Black

Shell: 91% Polyester, 9% Elastane. Waistband: 70% Viscose, 25% Polyamide, 5% Spandex. Lining: 100% Polyester



SASHA-IVR
5-PT-917

INSEAM: 31" RISE: 9 1/4" LEG: 12 3/4" SLIM LEG FLY-FRONT

A	B	C	D	E	F
12	8	10	6	4	2

Biscotti

75% Cotton, 13% Lyocell, 9% Rayon, 3% Spandex

STEPHANIE

Slim Fit.

Sits 3" Below Waist.
Slim Through Hip and Thigh.



FIT

F

FITTED

Slim fit through hip and thigh.

C

CLASSIC

Generous fit through hip and thigh.

E

EASY

Relaxed fit through hip and thigh.

WAIST

N

NATURAL

Sits at the natural waistline.

R

REGULAR

Sits 1" below the natural waistline.

L

LOW

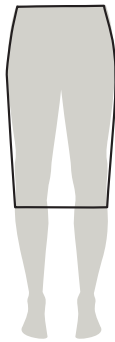
Sits 2" below the natural waistline.

H

HIGH

Sits above the natural waistline.

SILHOUETTE



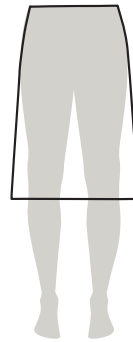
PENCIL

Skirt has a narrow fit through hip and thigh. Hem opening is narrower than thigh.



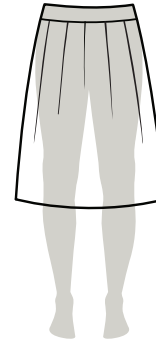
STRAIGHT

Skirt follows contours from waist to hipline, then hangs straight to the hem.



A-LINE

Skirt follows contours from waist to hipline, then gradually widens towards the hem.



FIT & FLARE

Skirt has a generous fit through low hip and thigh. Hem opening is wider than thigh.

The location of the top of the skirt (waist) affects where the bottom of the skirt hits the leg. Most of our skirts are Regular Waist, hitting 1" below the natural waist, but some seasons we offer some skirts at the natural waist or above that are listed as High-Waisted. It is important to note that skirt lengths are always given from the top of the waistband—thus a skirt that is 22" Regular Waist and a skirt that is 23"-24" High-Waisted could possibly end at the same point on the leg.

C

CLASSIC

Generous fit through hip and thigh.



IBERIA
1-SK-3088

LENGTH: 21" **R**

A-LINE SHAPE

A	B	C	D	E	F
10	12	2	4	6	8

White, Bittersweet, Pink, Yarrow, Camellia, Celandine, Campanula, Blue Bell, Fern Green, Summer Green, Antique Gold
100% Cotton



MARAIS
1-SK-2704

LENGTH: 22" **N**

A-LINE SHAPE

A	B	C	D	E	F
6	8	10	12	2	4

Camellia, Bittersweet, Terracotta, Celandine
58% Cotton, 23% Polyester, 19% Acrylic



TANAGER
1-SK-2984

LENGTH: 23" **R**

A-LINE SHAPE

A	B	C	D	E	F
6	8	10	8	2	4

Campanula
66% Linen, 32% Viscose, 2% Elastane



EL DORADO
1-SK-2988

LENGTH: 26" **R**

A-LINE SHAPE

A	B	C	D	E	F
8	10	10	2	4	6

Golden Spice
66% Linen, 32% Viscose, 2% Elastane



GOYA
5-SK-3163

LENGTH: 26" **N**

PENCIL SHAPE

A	B	C	D	E	F
4	6	8	10	4	2

Black
75% Acetate, 22% Polyamide, 3% Elastane



TUILERIES
1-SK-2538

LENGTH: 26 1/2" **R**

PENCIL SHAPE

A	B	C	D	E	F
8	10	12	2	4	6

Imperial Blue, Ivory, Doeskin, Sable, Camellia, Blue Bell, Lilyrad, Green Ash, Green Eyes, Terracotta
51% Viscose, 36% Polyester, 11% Polyamide, 2% Elastane



MENORCA
1-SK-3066

LENGTH: 27" **R**

A-LINE SHAPE

A	B	C	D	E	F
6	2	4	6	8	10

White, Campanula
100% Polyester



ANNA KARINA
5-SK-2598

LENGTH: 28" **N**

A-LINE SHAPE

A	B	C	D	E	F
S	M	L	S	M	L

Black, White
62% Viscose, 38% Polyester



TROPICAL
5-SK-3071

LENGTH: 28" **N**

FIT & FLARE SHAPE

A	B	C	D	E	F
4	6	8	10	2	2

Fern Green, Irish Green, Honeydew, Black, Camellia, Campanula
100% Polyester



PONT NEUF
5-SK-2579

LENGTH: 30 1/2" **N**

A-LINE SHAPE

A	B	C	D	E	F
10	12	2	4	6	8

Doeskin, Lilyrad, Sable, Green Ash, Smoke
78% Polyester, 17% Rayon, 5% Spandex



PICTURESQUE
1-SK-2508

LENGTH: 32" **N**

FIT & FLARE SHAPE

A	B	C	D	E	F
12	2	4	6	8	10

Ivory, Lilyrad, Imperial Blue, Terracotta, Bittersweet, Camellia, Celandine
98% Cotton, 2% Spandex



VERANDA
1-SK-3010

LENGTH: 36" **N**

A-LINE SHAPE

A	B	C	D	E	F
2	4	6	8	10	2

Ivory, Absinthe Green, Verbena, Light Campanula, Imperial Blue, Fern Green
92% Silk, 8% Spandex

