



etcetera

SUMMER 2024 LOOKBOOK

TABLE OF CONTENTS

DRESSES				PANTS			
4-DR-3114	BEACHCOMBER	\$325	26	4-PT-3145	ANTIBES	\$235	27
2-DR-3037	BLACK LOTUS	\$450	6	2-PT-2872	ARECA	\$250	15
2-DR-2702	CARAVAN	\$325	14	2-PT-2883	BASKERVILLE	\$295	6
2-DR-3031	CELESTIAL	\$395	11	2-PT-4362	BERBER	\$195	14
2-DR-3029	LUCIDITY	\$325	10	4-PT-3141	CAPITOLA	\$295	22
4-DR-3154	MONTENEGRO	\$395	23	2-PT-2975	CASABLANCA	\$325	14
2-DR-3051	MOORISH	\$395	10	2-PT-3580	CATAMARAN	\$250	7
4-DR-3117	SANDPIPER	\$275	26	4-PT-3153	GULF STREAM	\$250	27
2-DR-3033	SENSATION	\$395	18	2-PT-3044	HIGHLIGHT	\$275	15
2-DR-3045	SOUK	\$450	14	2-PT-2831	IDYLL	\$250	7
4-DR-3142	SURFSIDE	\$375	26	2-PT-3167	MODISH	\$295	6
JACKETS				2-PT-3638	PASSAGE-BLK	\$165	7
2-JK-2882	BASKERVILLE	\$495	6	2-PT-3641	PASSAGE-BLU	\$165	10
2-JK-3036	CALLIOPE	\$335	6	2-PT-3640	PASSAGE-NVY	\$165	11
2-JK-3047	LALLA	\$395	11	2-PT-2977	RODEO DRIVE	\$295	14
4-JK-3115	MONACO	\$360	26	4-PT-3100	SAND DOLLAR	\$275	26
4-JK-2976	SAND DOLLAR	\$495	26	2-PT-3103	SPICE	\$275	15
KNITS				4-PT-3151	TRIESTE	\$250	23
2-KN-2690	ANDROS	\$250	14	2-PT-3028	VALIANT	\$295	18
2-KN-2768	ATLAS	\$250	15	SKIRTS			
4-KN-3317	CORSICAN	\$250	23	2-SK-3050	BERBER	\$235	18
2-KN-2680	FREEPORT	\$275	7	2-SK-3039	FROND	\$225	10
2-KN-2674	GRANDIFLORA	\$275	10	2-SK-3046	OASIS	\$250	18
4-KN-2826	GULF STREAM	\$235	27	4-SK-3139	TAHITI	\$295	22
4-KN-3152	GULF STREAM	\$325	27	2-SK-4386	TRACERY	\$325	10
2-KN-2681	INFLUENCER	\$275	10	TOPS			
4-KN-3156	MALIBU	\$195	22	4-TP-3144	ANTIBES	\$250	27
2-KN-2665	MEDINA	\$250	15	2-TP-2869	ARECA	\$235	15
2-KN-2770	PAGEENTRY	\$350	18	2-TP-2871	ARECA	\$195	15
2-KN-2691	PALM BEACH	\$350	18	2-TP-3168	CABO	\$225	7
2-KN-2666	POLARIS	\$235	7	4-TP-3116	CANNES	\$235	27
4-KN-2725	PRESIDIO	\$250	22	2-TP-3041	COURTLY	\$325	14
4-KN-2896	RIPPLES	\$275	23	2-TP-3738	DOYENNE	\$250	7
4-KN-2903	RIVIERA	\$295	27	2-TP-2979	FREE TIME	\$295	18
2-KN-2701	SABRINA	\$250	15	2-TP-3049	FRONTIER	\$195	18
2-KN-2697	SAN MARCO	\$265	15	4-TP-3415	LAGUNA-BGE	\$85	23
4-KN-2824	SEA CHAMPION	\$295	23	4-TP-3413	LAGUNA-BLK	\$85	6
2-KN-2978	TAJINE	\$295	14	4-TP-3417	LAGUNA-BLU	\$85	10
4-KN-2747	TROUVILLE	\$225	22	4-TP-3412	LAGUNA-NVY	\$85	11
				4-TP-3416	LAGUNA-ORN	\$85	22
				4-TP-3155	LAGUNA-WHT	\$85	18
				4-TP-3140	LONG BEACH	\$225	26
				2-TP-2981	LUAU	\$250	7
				2-TP-3043	MINARET	\$295	14
				2-TP-3038	SOIREE	\$265	6
				2-TP-3027	SOUTH BEACH	\$275	6
				4-TP-3147	SUMMER PLACE	\$325	23
				4-TP-3138	TAHITI	\$250	22
				2-TP-2855	TANGIER	\$250	11
				2-TP-3431	TUSCANY-DKBL	\$110	27
				2-TP-3429	TUSCANY-RED	\$110	22

ESSENTIALS

2-TP-1439	AEGIS-BLK	\$229	32
2-TP-149	CASPIAN-WHT	\$119	33
2-TP-2303	CLEVER-BLK	\$129	32
2-TP-2304	CLEVER-NVY	\$129	32
2-TP-2305	CLEVER-WHT	\$129	32
2-TP-864	ESSENCE-BLK	\$99	32
2-TP-865	ESSENCE-NVY	\$99	32
2-TP-148	ESSENCE-WHT	\$99	32
2-TP-103	NORA	\$229	32
2-TP-867	ZOOM-IVR	\$129	32

2-PT-854	HOLLYWOOD-BLK	\$229	33
2-PT-1432	HOLLYWOOD-GRY	\$229	33
2-PT-853	HOLLYWOOD-NVY	\$229	33
2-PT-850	HOLLYWOOD-WHT	\$229	33
2-PT-872	WANDERLUST-BLK	\$199	33
2-PT-306	WANDERLUST-IVR	\$199	33
2-PT-874	WANDERLUST-WHT	\$199	33

etcetera



1 BASKERVILLE \$495
2-JK-2882 00-16
CLASSIC FIT

Brilliant White, Black



Jacket in a stretch houndstooth jacquard with black multi-width grosgrain ribbon stripes at hem, slit sleeves, and sleeve facing. Jewel neck with wide self facing. Kissing front with shiny nickel hook and eye closures. Modesty placket. Patch pockets. Shoulder pads. Front and back princess seams. Lined. Length: 23".

A	B	C	D	E	F
2	4	6	8	10	12

98% Cotton, 2% Spandex

4 SOIREE \$265
2-TP-3038 00-16
CLASSIC FIT

Black



Silk gazar swing cami with empire waist seam, plus front and back knife pleats. Sweetheart neck. Hidden side zipper. Spaghetti straps with shiny black adjusters. Lined through top bodice. 61 1/2" sweep. Length: 23 1/2".

A	B	C	D	E	F
4	6	8	4	6	8

100% Silk

7 CALLIOPE \$335
2-JK-3036 00-16
CLASSIC FIT

Black



Tulle jacket with tulle ribbon embroidery in allover floral swirls. Stretch satin chiffon jewel neck binding and spaghetti ties. Kissing front and hem with power mesh edges. Raglan dolman elbow sleeves. Power mesh lined. Length: 20".

A	B	C	D	E	F
4	6	8	4	6	8

Self: 100% Nylon. Combo: 97% Polyester, 3% Spandex

2 LAGUNA-BLK \$85
4-TP-3413 XS-XL
FITTED

Black



Tank top in premium stretch cotton jersey knit. Portrait neck and armholes have self tubular trim and single-needle finish. Lingerie loops. Self bend-back hem with double-needle cover stitch. Unlined. Length: 23 1/2".

A	B	C	D	E	F
M	S	XS	M	XL	L

95% Cotton, 5% Elastane

5 SOUTH BEACH \$275
2-TP-3027 00-16
EASY FIT

Black, White



Stretch silk satin camisole blouse in shiny black and matte white pieced stripes. Straight neck with wide self facing has fixed shirring in back and front. Back-adjusting straps with shiny nickel sliders. Side slits. Self bend-back hem. Power mesh lining. Length: 22".

A	B	C	D	E	F
6	2	4	6	8	10

Self: 92% Silk, 8% Spandex. Lining: 95% Polyester, 5% Spandex

8 BLACK LOTUS \$450
2-DR-3037 00-16
A-LINE SHAPE CLASSIC FIT

Black



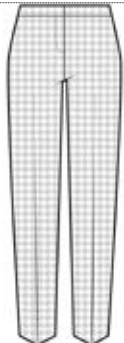
Cotton gauze three-tiered empire maxi dress. Exploded-scale floral applique at empire bodice. Hidden back zipper. Back-adjustable spaghetti straps. 98" sweep. Self bend-back hem. Lined bodice and half of skirt. Dress length: 46". Skirt length: 41".

A	B	C	D	E	F
10	4	2	4	6	8

100% Cotton

3 BASKERVILLE \$295
2-PT-2883 00-16
STRAIGHT LEG AUDREY SEMI FITTED

Brilliant White



Full-length pants in a stretch-cotton houndstooth jacquard. Applied waistband with self facing is pitched 1" lower in front than in back. Fly-front. Back shaping darts and besom faux pockets. Self bend-back hem. Unlined. Front rise: 9 1/2". Inseam: 34". Leg opening: 15 1/2".

A	B	C	D	E	F
2	4	6	8	10	12

98% Cotton, 2% Spandex

6 MODISH \$295
2-PT-3167 00-16
STRAIGHT LEG KATE CLASSIC FIT

Black



Full-length cigarette pants in sparkling coated Italian stretch-cotton plain weave. Elegant, no-waistband style with elastic facing. Hidden side zipper. Front welt pockets with shiny black bar rivets. Back shaping seams. 10" cuffs with slits. Bend-back hem. Unlined. Front rise: 10 1/2". Inseam: 34". Leg opening: 18".

A	B	C	D	E	F
10	10	2	4	6	8

98% Cotton, 2% Elastane

9 FREEPORT \$275
2-KN-2680 XS-XL
SEMI FITTED

White, Black



Pullover moss stitch knit cotton top with black Ottoman stripes that align the body with the slight blouson sleeves. Linked-on Ottoman-rib scoop neck and ribbed cuffs. Tubular jersey raglan seams. Tubular jersey start hem. Fully fashioned. Unlined. Length: 23 1/2".

A	B	C	D	E	F
L	S	M	L	S	M

93% Cotton, 4% Viscose, 3% Nylon

11 CABO \$225
2-TP-3168 OO-16
CLASSIC FIT

White



Sleeveless shirt in stretch cotton sateen with triangular back shoulder cutouts. Shirt collar. Placket with hidden white troca shell buttons. Lingerie loops. Armholes and back pointed yoke with self facing. Center-back faux placket. Side slits. Baby hem. Unlined. Length: 25 1/2".

A	B	C	D	E	F
2	4	6	8	10	12

98% Cotton, 2% Spandex

14 LUAU \$250
2-TP-2981 OO-16
EASY FIT

Black, White, Serenity Blue



Pullover blouse in stretch linen plain weave in a placed hollyhock print with high-low cuffs. Solid jewel neck, notch, and faux placket. 3/4 sleeves are Shirred at the two-ply cuffs. Bust darts. Side slits. Self bend-back hem. Unlined. Length: 26".

A	B	C	D	E	F
2	4	6	8	10	4

Self: 52% Linen, 46% Cotton, 2% Spandex. Combo: 97% Cotton, 3% Spandex

10 PASSAGE-BLK \$165
2-PT-3638 XS-XL
WIDE LEG GRACE EASY FIT

Black



Full-length, pull-on lounge pants in stretch cotton jersey knit. Applied two-ply waistband with encased elastic. Angled front pockets. Self bend-back hem. Cut and sew. Unlined. Front rise: 10 1/8". Inseam: 34". Leg opening: 20 1/2".

A	B	C	D	E	F
S	M	S	M	S	M

95% Cotton, 5% Elastane

12 DOYENNE \$250
2-TP-3738 OO-16
EASY FIT

Black



Pullover blouse in stretch cotton shirting with high-low cuffs. Banded jewel neck, notch, and faux placket. 3/4 sleeves are Shirred at the two-ply cuffs. Two-ply back yoke with inverted box pleat. Side slits. Unlined. Length: 25 1/2".

A	B	C	D	E	F
4	6	8	10	2	2

97% Cotton, 3% Spandex

15 POLARIS \$235
2-KN-2666 XS-XL
FITTED

Black



Jersey knit pullover top in an Italian cotton blend. Applied rib-stitch crew neck, armholes, and side-slits, and shirttail hem. Fully fashioned. Unlined. Length: 23 1/4".

A	B	C	D	E	F
M	L	S	M	L	S

85% Cotton, 15% Polyester

13 IDYLL \$250
2-PT-2831 OO-16
A-LINE SHAPE FARRAH CLASSIC FIT

Black



Wrap-look skort in cotton floral eyelet embroidery with front flap and back shorts legs. No-waistband style faced with satin elastic sits 1" below the natural waist. Hidden side zipper. Side front shiny black metal flower button with gem-cut onyx. Back shaping darts. Cotton voile lined. Front rise: 10 3/4". Inseam: 6". Leg opening: 27 1/2".

A	B	C	D	E	F
10	4	2	4	6	8

100% Cotton

16 CATAMARAN \$250
2-PT-3580 OO-16
STRAIGHT LEG KATE CLASSIC FIT

White



Yachting shorts in stretch cotton shirting. Applied waistband. Fly-front. White enameled buttons, one functioning and one trim. Front slash pockets with hidden zippers. Front pintucks. Back shaping darts and welt faux pockets. Bend-back hem. Unlined. Front rise: 10 1/2". Inseam: 11". Leg opening: 20".

A	B	C	D	E	F
8	10	8	2	4	6

97% Cotton, 3% Spandex



A



B

A
 2-JK-2882 BASKERVILLE \$495
 2-TP-3168 CABO \$225
 2-PT-2883 BASKERVILLE \$295

B
 2-KN-2666 POLARIS \$235
 2-PT-2831 IDYLL \$250

C
 2-TP-3027 SOUTH BEACH \$275
 2-PT-2865 LOGGIA \$325

D
 2-DR-3037 BLACK LOTUS \$450



C



D



E



F

E
 2-JK-3036 CALLIOPE \$335
 2-TP-3038 SOIREE \$265
 2-PT-3167 MODISH \$295

F
 2-TP-3738 DOYENNE \$250
 2-PT-2831 IDYLL \$250

G
 2-KN-2680 FREEPORT \$275
 2-PT-3638 PASSAGE-BLK \$165

H
 2-TP-2981 LUAU \$250
 2-PT-3641 PASSAGE-BLU \$165



G



H

17 INFLUENCER **\$275**
2-KN-2681 XS-XL
EASY FIT

Strong Blue Heathered



Racking rib-stitch boat neck pullover in an organic cotton blend features a deep V-neck in back with a functional button placket. Shiny nickel buttons with strong blue enamel. Linked-on Ottoman-trimmed, full-Milano neck. Ribbed hem with tubular jersey link-on. Bracelet sleeves. Rib-start cuffs. Lingerie loops. Fully fashioned. Unlined. Length: 22".

A	B	C	D	E	F
M	S	M	S	M	S

52% Organic Cotton, 33% Lyocell, 9% Cotton, 5% Nylon, 1% Spandex

19 LAGUNA-BLU **\$85**
4-TP-3417 XS-XL
FITTED

Serenity Blue



Tank top in premium stretch cotton jersey knit. Portrait neck and armholes have self tubular trim and single-needle finish. Lingerie loops. Self bend-back hem with double-needle cover stitch. Unlined. Length: 23 1/2".

A	B	C	D	E	F
S	XL	L	M	S	XS

95% Cotton, 5% Elastane

22 GRANDIFLORA **\$275**
2-KN-2674 XS-XL
CLASSIC FIT

Serenity Blue, White



Linen-cooled, heathered jersey knit cardigan with an exploded-scale, white stylized floral ribbed intarsia at front and bracelet sleeves. Linked-on rib-knit crew neck, full-needle placket, and tubular jersey hem. Shiny nickel buttons with serenity blue enamel. Rib-start cuffs. Fully fashioned. Unlined. Length: 20 3/4".

A	B	C	D	E	F
M	XL	S	M	XL	S

44% Cotton, 36% Linen, 20% Recycled Polyester

18 FROND **\$225**
2-SK-3039 XS-XL
PENCIL SHAPE **CLASSIC FIT**

Persian Blue, Brilliant White, Navy, Strong Blue Heathered



Tubular birdseye knit jacquard pull-on skirt with a placed oversized fern motif in four colors that wraps from front to back. Linked-on plaited rib-knit waistband with encased elastic sits at the natural waist. Full-Milano back seam. Center-back slit. Unlined. Length: 25".

A	B	C	D	E	F
M	L	S	M	L	S

30% Organic Cotton, 28% Cotton, 19% Lyocell, 13% Recycled Nylon, 5% Linen, 3% Recycled Polyester, 2% Other Fibers

20 TRACERY **\$325**
2-SK-4386 XS-XL
FIT & FLARE SHAPE **FITTED**

Brilliant White



Lace-look, pull-on knit maxi skirt, in four different links-links patterns, alternating with jersey, is shirred below the 18" fitted waist yoke. Linked-on tubular jersey waistband sits at the natural waist. Lined. Front length: 35 1/2". Back length: 36 1/2".

A	B	C	D	E	F
L	M	S	M	L	S

Self: 60% Cotton, 40% Polyester. Lining: 100% Polyester

23 LUCIDITY **\$325**
2-DR-3029
SHEATH SHAPE **CLASSIC FIT**

Serenity Blue, Navy, White



Dress in stretch Portuguese double weave with navy and white tipping at the open crew neck and armholes. Hidden back zipper. Front and back princess seams. Front darts and waist seam. On-seam side pockets. Lingerie loops. Self bend-back hem. Lined. Dress length: 41". Skirt length: 23 1/2".

A	B	C	D	E	F
8	10	12	2	4	6

63% Polyester, 27% Viscose, 7% Cotton, 3% Elastane

21 PASSAGE-BLU **\$165**
2-PT-3641 XS-XL
WIDE LEG **GRACE EASY FIT**

Serenity Blue



Full-length, pull-on lounge pants in stretch cotton jersey knit. Applied two-ply waistband with encased elastic. Angled front pockets. Self bend-back hem. Cut and sew. Unlined. Front rise: 10 1/8". Inseam: 34". Leg opening: 20 1/2".

A	B	C	D	E	F
M	XS	L	S	L	XS

95% Cotton, 5% Elastane

24 MOORISH **\$395**
2-DR-3051 00-16
A-LINE SHAPE **CLASSIC FIT**

Brilliant White, Persian Blue



Stretch cotton poplin empire dress in three Moorish floral tile prints with 37" back ties. Curved neck. Back-adjusting straps with shiny nickel sliders. Encased back elastic. Front princess seams. Shirring at empire waist and skirt. Side on-seam pockets. 100" sweep. Cotton-voile-lined bodice. Dress length: 44". Skirt length: 28".

A	B	C	D	E	F
8	10	8	2	4	6

97% Cotton, 3% Spandex

25 LALLA

\$395

2-JK-3047

00-16

CLASSIC FIT

Washed Indigo, Gold



Tailored jacket in washed stretch cotton denim with gold topstitching on both sides of the front and back styling seams. Stand collar and back hem with inverted pleats. V-neck. Self-faced front edges, slit sleeves, and hem. Gunmetal hook and eye. Back center seam and princess seams. Unlined. Length: 23".

A	B	C	D	E	F
8	4	6	8	4	6

99% Cotton, 1% Spandex

27 TANGIER

\$250

2-TP-2855

00-16

SEMI FITTED

Navy, Sugar Swizzle Ivory, Brilliant White



Moroccan screen-print blouse in stretch knit jersey. Shirt collar. Placket with white troca shell buttons. Short sleeves. Two-button cuffs. Front and back princess seams. Two-ply back yoke. Coverstitched shirttail hem. Cut and sew. Unlined. Length: 26".

A	B	C	D	E	F
6	8	10	8	2	4

87% Nylon, 13% Spandex

26 CELESTIAL

\$395

2-DR-3031

00-16

A-LINE SHAPE

EASY FIT

Navy, Serenity Blue, White, Persian Blue



Painterly cotton voile halter maxi dress in a placed, exploded-scale floral print. Two-ply banded halter neck. V-slit and armholes with self facing. Hidden back zipper. Self bend-back hem. Unlined. Dress length: 56 1/2". Skirt length: 39".

A	B	C	D	E	F
2	2	4	6	8	10

100% Cotton

28 LAGUNA-NVY

\$85

4-TP-3412

XS-XL

FITTED

Navy



Tank top in premium stretch cotton jersey knit. Portrait neck and armholes have self tubular trim and single-needle finish. Lingerie loops. Self bend-back hem with double-needle cover stitch. Unlined. Length: 23 1/2".

A	B	C	D	E	F
S	XS	S	XL	L	M

95% Cotton, 5% Elastane

29 PASSAGE-NVY

\$165

2-PT-3640

XS-XL

WIDE LEG

GRACE EASY FIT

Navy



Full-length, pull-on lounge pants in stretch cotton jersey knit. Applied two-ply waistband with encased elastic. Angled front pockets. Self bend-back hem. Cut and sew. Unlined. Front rise: 10 1/8". Inseam: 34". Leg opening: 20 1/2".

A	B	C	D	E	F
XS	S	M	XS	M	S

95% Cotton, 5% Elastane



A



B

A
 2-TP-2979 FREE TIME \$295
 4-TP-3412 LAGUNA-NVY \$85
 2-SK-3039 FROND \$225

B
 2-KN-2674 GRANDIFLORA \$275
 4-TP-3417 LAGUNA-BLU \$85
 2-PT-3641 PASSAGE-BLU \$165

C
 2-DR-3029 LUCIDITY \$325

D
 2-DR-3051 MOORISH \$395



C



D



E



F

E
 2-JK-3047 LALLA \$395
 4-TP-3155 LAGUNA-WHT \$85
 2-SK-4386 TRACERY \$325

F
 2-JK-3047 LALLA \$395
 2-TP-2855 TANGIER \$250
 2-PT-3028 VALIANT \$295

G
 2-DR-3031 CELESTIAL \$395

H
 2-KN-2674 GRANDIFLORA \$275
 2-TP-3168 CABO \$225
 2-PT-3580 CATAMARAN \$250



G



H

30 MINARET

\$295

2-TP-3043

00-16

CLASSIC FIT



Sugar Swizzle Ivory, Gold, Pink Flambe

Cotton voile blouse with sequined floral embroidery in metallic gold and pink flambe. Solid stretch cotton sateen facing at shirt collar, placket, cuffs, and back yoke. White troca shell buttons. Button-cuff sleeves convert to 3/4 length with button tabs. Back pleat. Side slits. Bend-back hem. Unlined. Length: 26 1/2".

A	B	C	D	E	F
2	4	6	8	10	6

Self: 100% Cotton, Combo: 98% Cotton, 2% Spandex

33 SOUK

\$450

2-DR-3045

00-16

A-LINE SHAPE

CLASSIC FIT



Sugar Swizzle Ivory, Mayfly Olive, Limelight, Pink Flambe, Powder Pink

French cotton voile maxi dress in a Moroccan paisley print with a two-ply, 75" self tie belt. Deep V-neck with self facing in front and back. Hidden back zipper. Flared elbow sleeves. Crochet belt loops. Front and back princess seams. Self bend-back hem. 100" sweep. Unlined. Dress length: 60". Skirt length: 42 1/2".

A	B	C	D	E	F
2	4	6	8	10	6

100% Cotton

36 TAJINE

\$295

2-KN-2978

XS-XL

SEMI FITTED



Cashew

Transfer stitch knit cardigan with rib trim details in a chic cropped length features a linen-blend tape yarn. Linked-on flat back ribbed crew neck. Cashew zipper front. Bracelet sleeves. Jersey and reverse jersey ribbed cuffs and hem. Fully fashioned. Unlined. Length: 17 1/2".

A	B	C	D	E	F
S	M	S	XL	S	M

37% Linen, 34% Cotton, 29% Nylon

31 COURTLY

\$325

2-TP-3041

00-16

CLASSIC FIT



Powder Pink, Ivory, Washed Poppy, Barbados Cherry, Light Pink Flambe, Pink Flambe, Persian Blue, Strong Blue, Lettuce Green, Mayfly Olive, Light Golden Poppy, Golden Poppy, Light Cashew, Cashew, Mulch, Shiny Gold, Shiny Silver

Silk blouse in a silver and gold metallic fil coupé jacquard with multi-size Moroccan paisley. Stand collar with V-notch. Placket with hidden white troca shell buttons. Cap sleeves. 72" self tie belt. Crochet thread loops. Two-ply back yoke with box pleat. Side slits. Bend-back hem. Georgette facing. Unlined. Length: 26 1/4".

A	B	C	D	E	F
10	4	2	4	6	8

77% Silk, 23% Metallic

34 ANDROS

\$250

2-KN-2690

XS-XL

EASY FIT



Cashew, Sugar Swizzle Ivory

Linen-blend jersey pullover knit top with asymmetrical intarsia stripes placed in front and back. Linked-on tubular jersey boat neck. 3/4 sleeves. Linked-on full-Milano cuffs and hem. Side slits. Fully fashioned. Unlined. Length: 26".

A	B	C	D	E	F
S	M	L	S	M	L

62% Linen, 38% Viscose

37 CARAVAN

\$325

2-DR-2702

XS-XL

SHEATH SHAPE

FITTED



Cashew

This transfer-stitch knit tank dress in a linen-blend tape yarn features rib details and open pointelle at the side godets. Full-Milano V-neck, straps, and hem. Rib-knit back wraps to front. Fully fashioned. Back adjustable straps with matching sliders. Lingerie loops. Jersey lined. Dress length: 39". Skirt length: 20".

A	B	C	D	E	F
S	M	S	M	S	M

Shell: 36% Linen, 34% Cotton, 30% Nylon. Lining: 90% Modal, 10% Spandex

32 CASABLANCA

\$325

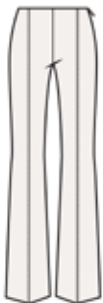
2-PT-2975

00-16

WIDE BOOTCUT LEG

KATE CLASSIC FIT

Sugar Swizzle Ivory



Full-length pants in a linen-cooled cotton Japanese plain weave. Clean, no-waistband style with elastic facing. Hidden side zipper. Front pintucks. Back shaping darts. Self bend-back hem. Unlined. Front rise: 10 3/4". Inseam: 34". Leg opening: 20".

A	B	C	D	E	F
2	4	6	8	10	2

90% Cotton, 7% Linen, 3% Polyurethane

35 RODEO DRIVE

\$295

2-PT-2977

00-16

SLIGHT BOOTCUT LEG

KATE CLASSIC FIT

Cashew



Ankle-length excursion pants in a linen-cooled, Japanese plain weave. Elegant, no-waistband style with elastic facing. Hidden side zipper. Front pintucks. Back waist darts. Unlined. Front rise: 10 3/4". Inseam: 28". Leg opening: 19".

A	B	C	D	E	F
4	6	8	10	4	2

90% Cotton, 7% Linen, 3% Polyethylene

38 BERBER

\$195

2-PT-4362

00-16

WIDE LEG

FARRAH CLASSIC FIT

Mulch



Safari shorts in stretch cotton double weave. Applied waistband with decorative snap tabs. Fly-front. Jeans patch pockets in front and back with rivets. Shiny gunmetal hardware. Back shaping darts. Self bend-back hem. Unlined. Front rise: 10 3/4". Inseam: 5". Leg opening: 27".

A	B	C	D	E	F
6	8	10	12	2	4

96% Cotton, 4% Spandex

39 ARECA **\$235**
 2-TP-2869 XS-XL
EASY FIT

Mayfly Olive



Tunic in a flat-back stretch rib knit. Shirt collar. Placket has shiny gunmetal buttons with mayfly olive faux horn. Elbow sleeves with self turnback hems. Drop shoulders. Side slits. Cut and sew. Self turn-back hem. Unlined. Length: 28".

A	B	C	D	E	F
L	S	M	L	S	M

93% Polyester, 7% Spandex

42 ATLAS **\$250**
 2-KN-2768 XS-XL
EASY FIT

Sugar Swizzle Ivory, Metallic Gold, Mayfly Olive



Pullover knit top features sunburst intarsia stripes in jersey and reverse jersey, including metallic gold. Linked-on tubular jersey boat neck, shoulder seams, and dolman cap-sleeves with tubular finish. Linked-on flat back rib hem. Lingerie loops. Unlined. Length: 23".

A	B	C	D	E	F
S	M	L	S	M	L

43% Cotton, 35% Recycled Nylon, 12% Rayon, 6% Nylon, 4% Polyester

45 SABRINA **\$250**
 2-KN-2701 XS-XL
CLASSIC FIT

Powder Pink, Sugar Swizzle Ivory, Cashew



Organic cotton, jersey knit pullover top with front and back Ottoman ribs in sugar swizzle ivory and cashew. Rib-knit V-neck and hem with tubular jersey link-ons. Elbow sleeves. Rib-start cuffs. Lingerie loops. Fully fashioned. Unlined. Length: 22 3/4".

A	B	C	D	E	F
M	XS	S	M	L	S

50% Organic Cotton, 31% Lyocell, 11% Cotton, 5% Nylon, 3% Other Fibers

40 ARECA **\$195**
 2-TP-2871 XS-XL
CLASSIC FIT

Mayfly Olive, White




Sleeveless tank top in a flat-back, stretch rib knit with woven white stretch organic cotton shirting insets at the front neck, and front and back hems. Banded scoop neck. Turnback armholes. Lingerie loops. Side slits. Cut and sew. Self bend-back hem with coverstitching. Unlined. Front length: 26 3/4". Back length: 25".

A	B	C	D	E	F
L	S	M	L	S	M

Self: 93% Polyester, 7% Spandex. Combo: 54% Organic Cotton, 45% Lyocell, 1% Spandex

43 MEDINA **\$250**
 2-KN-2665 XS-XL
FITTED

Sugar Swizzle Ivory, Pink Flambe, Powder Pink



Pullover jersey knit top with asymmetrical jersey and reverse jersey ombré intarsia at the front body, and front and back right sleeve. Self-start boat neck, cuffs, and hem. 3/4 sleeves. Fully fashioned. Unlined. Length: 24".

A	B	C	D	E	F
S	M	L	S	M	L

51% Cotton, 42% Recycled Nylon, 4% Organic Cotton, 3% Lyocell

46 SAN MARCO **\$265**
 2-KN-2697 XS-XL
FITTED

Sugar Swizzle Ivory




Pullover rib-knit top in a cotton-blend chain yarn with a linked-on moss-stitch polo collar and placket. Elbow sleeves. Rib-start cuffs and hem. Fully fashioned. Unlined. Length: 24 1/4".

A	B	C	D	E	F
L	S	M	L	S	M

55% Cotton, 45% Recycled Nylon

41 ARECA **\$250**
 2-PT-2872 XS-XL
TAPERED LEG **DIANA CLASSIC FIT**

Mayfly Olive




Ankle-length, pull-on lounge pants in a flat-back stretch rib knit. Applied waistband with self facing, back encased elastic, and self drawcord. Faux fly-front. Angled front pockets with self facing. Front pintucks. Cut and sew. Self bend-back hem. Unlined. Front rise: 10 1/4". Inseam: 30 1/2". Leg opening: 15 1/2".

A	B	C	D	E	F
L	M	XS	M	XS	L

93% Polyester, 7% Spandex

44 HIGHLIGHT **\$275**
 2-PT-3044 OO-16
STRAIGHT LEG **GRETA SEMI FITTED**

Sugar Swizzle Ivory




Full-length, pull-on pants in crêpe-backed stretch ponte knit. Applied waistband with self facing and back satin elastic. Front pintucks. Back shaping darts. Unlined. Front rise: 10 1/4". Inseam: 34". Leg opening: 16".

A	B	C	D	E	F
4	6	8	10	8	14

96% Polyester, 4% Spandex

47 SPICE **\$275**
 2-PT-3103 OO-16
BOOTCUT LEG **SALMA SLIM FIT**

Pink Flambe, Powder Pink, Persian Blue, Brilliant White, Sugar Swizzle Ivory



Full-length stretch cotton twill jeans in a placed multicolor Moroccan tile print. Applied waistband with belt loops. Fly-front with tack button. Five-pocket styling with rivets. Shiny light gold hardware. Back shaping yoke. Unlined. Front rise: 10 1/2". Inseam: 34". Leg opening: 19 1/2".

A	B	C	D	E	F
6	8	10	10	2	4

97% Cotton, 3% Spandex



A



B

A
 2-KN-2690 ANDROS \$250
 2-PT-2977 RODEO DRIVE \$295

B
 2-DR-3045 SOUK \$450

C
 2-TP-3041 COURTLY \$325
 2-PT-3044 HIGHLIGHT \$275

D
 2-KN-2978 TAJINE \$295
 2-DR-2702 CARAVAN \$325



C



D



E



F

E
 2-TP-2869 ARECA \$235
 2-TP-2871 ARECA \$195
 2-PT-2872 ARECA \$250

F
 2-KN-2768 ATLAS \$250
 2-PT-2872 ARECA \$250

G
 2-KN-2665 MEDINA \$250
 2-PT-2975 CASABLANCA \$325

H
 2-TP-2979 FREE TIME \$295
 4-KN-3156 MALIBU \$195
 2-PT-3103 SPICE \$275



G



H

48 SENSATION \$395

2-DR-3033 XS-XL
A-LINE SHAPE EASY FIT



Vibrant Green, Lettuce Green, Pink Flambe, Mulch, Antique Moss

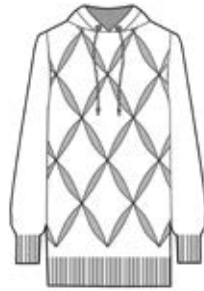
Stretch sateen maxi dress in an oversized placed flower and leaf print. Shirred peasant neck to wear above or below shoulders. Encased-elastic elbow sleeves. 75" two-ply self belt is 2" in center and 3 1/2" at ends. On-seam side pockets. Crochet loops. Bend-back hem. Unlined. Dress length: 55". Skirt length: 42 1/2".

A	B	C	D	E	F
S	M	S	M	S	M

97% Cotton, 3% Spandex

51 PALM BEACH \$350

2-KN-2691 XS-XL
EASY FIT



Brilliant White

Jersey knit hoodie has a full-needle rib front with stylized petal cutouts and full-Milano panel frames. Hood with linked-on tubular jersey edge, a knotted self tubular drawcord, and embroidered eyelets. Rib-start cuffs and hem. Fully fashioned. Unlined. Length: 24 1/2".

A	B	C	D	E	F
M	L	S	M	L	S

44% Cotton, 36% Linen, 20% Recycled Polyester

54 PAGEENTRY \$350

2-KN-2770 XS-XL
EASY FIT



Sugar Swizzle Ivory, Mulch, Powder Pink

Jersey knit pullover top with multi-color, full-Milano-faced Ottoman side stripes, and hidden mulch brown shoulder zippers. Linked-on tubular jersey crew neck, cuffs, and hem. Raglan sleeves. Side slits. Fully fashioned. Unlined. Length: 23 1/2".

A	B	C	D	E	F
L	S	M	L	XL	M

44% Cotton, 35% Recycled Nylon, 9% Viscose, 6% Organic Cotton, 4% Lyocell, 2% Nylon

49 FREE TIME \$295

2-TP-2979 00-16
EASY FIT



White

Tunic blouse in a stretch linen-blend plain weave with applied white grosgrain ribbon at the shoulders, cuffs, patch pockets, and back yoke. Shirred collar. Placket with white troca shell buttons. Dolman elbow sleeves. Curved hem with side slits and double bend back. Unlined. Length: 29".

A	B	C	D	E	F
4	6	8	10	12	2

52% Linen, 46% Cotton, 2% Spandex

52 LAGUNA-WHT \$85

4-TP-3155 XS-XL
FITTED



White

Tank top in premium stretch cotton jersey knit. Portrait neck and armholes have self tubular trim and single-needle finish. Lingerie loops. Self bend-back hem with double-needle cover stitch. Unlined. Length: 23 1/2".

A	B	C	D	E	F
XS	S	XL	L	M	S

95% Cotton, 5% Elastane

55 FRONTIER \$195

2-TP-3049 00-16
EASY FIT



Mulch, White

Plain weave linen shirt in placed, multi-directional yarn-dyed stripes. Stand collar. White troca shell button front. Cuffed cap sleeves. Side slits. Self bend-back hem. Unlined. Length: 26".

A	B	C	D	E	F
2	4	6	8	10	8

100% Linen

50 OASIS \$250

2-SK-3046 00-16
SLIGHT A-LINE SHAPE CLASSIC FIT



Sugar Swizzle Ivory, Limelight, Golden Poppy, Pink Flambe, Barbados Cherry, Powder Pink, Vibrant Green, Persian Blue, Strong Blue, Mulch

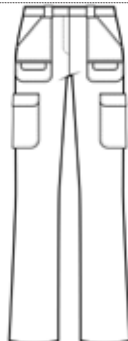
Stretch cotton twill skirt in a Moroccan foliage print. Clean, no-waistband style with satin elastic facing sits 1" below the natural waist. Hidden side zipper. Front knife pleats stitched down to 5 1/2" below top edge. Back center seam and darts for shape. Unlined. Length: 21".

A	B	C	D	E	F
8	10	12	8	10	12

97% Cotton, 3% Spandex

53 VALIANT \$295

2-PT-3028 00-16
STRAIGHT LEG KATE CLASSIC FIT



Brilliant White

Full-length cargo pants in stretch cotton sateen. Applied waistband with belt loops. Fly-front with tack button. Riveted front patch pockets with extra cargo pockets. Flap cargo thigh pockets. Riveted back patch pockets. Shiny nickel hardware. Bend-back hem. Unlined. Front rise: 10 1/2". Inseam: 34". Leg opening: 19".

A	B	C	D	E	F
12	2	4	6	8	10

97% Cotton, 3% Spandex

56 BERBER \$235

2-SK-3050 00-16
PENCIL SHAPE CLASSIC FIT



Mulch

Jeans skirt in stretch cotton twill with a Moroccan tassel hem. Applied waistband with belt loops sits 1" below the natural waist. Fly-front with tack button. Five-pocket styling with rivets. Tassel eyelets at hem. Shiny gunmetal hardware. Back shaping yoke. Self hem band. Unlined. Length: 19". (Not including trim.)

A	B	C	D	E	F
4	6	8	4	6	8

96% Cotton, 4% Spandex



A



B

A
2-DR-3033 SENSATION \$395

B
2-KN-2691 PALM BEACH \$350
4-TP-3155 LAGUNA-WHT \$85
4-PT-3151 TRIESTE \$250

C
4-TP-3417 LAGUNA-BLU \$85
2-SK-3046 OASIS \$250

D
2-KN-2770 PAGEENTRY \$350
2-PT-4362 BERBER \$195



C



D



by etcetera

57 TUSCANY-RED \$110

2-TP-3429 XS-XL CLASSIC FIT

Faded Rose



Banded scoop neck stretch cotton jersey tee shirt. Short sleeves. Curved hem. Bend-back cuffs and hem with double-needle cover stitching. Cut and sew. Unlined. Length: 24".

A	B	C	D	E	F
S	M	L	S	M	L

95% Cotton, 5% Elastane

59 PRESIDIO \$250

4-KN-2725 XS-XL CLASSIC FIT

Faded Rose Heather



Linen-blend, jersey knit top in a breezy tape yarn. Linked-on tubular jersey jewel neck and placket. Placket is framed in a full-Milano stitch. Antique brass ball buttons and loops. Short dolman sleeves with full-Milano trim. Linked-on hem in jersey and reverse-jersey ribs. Fully fashioned. Unlined. Length: 23".

A	B	C	D	E	F
XL	S	M	M	S	M

45% Linen, 35% Cotton, 20% Nylon

62 TAHITI \$250

4-TP-3138 OO-16 CLASSIC FIT

Burnt Sienna, Ancient Scroll, Cashew, Faded Rose



Stretch silk satin halter blouse in a stylized floral woodcut print, with Shirred shoulder straps looped through a faux tortoise shell ring. Neck, back and armholes with wide inside self binding. Hidden back zipper. Side slits. Self bend-back hem. Unlined. Length: 26 1/2".

A	B	C	D	E	F
8	10	6	2	4	6

92% Silk, 8% Spandex

58 TROUVILLE \$225

4-KN-2747 XS-XL FITTED

Faded Rose, Coral Gold



Plaited, two-toned knit pullover shell in multi-width overlapping transfer ribs in a deluxe blend of supima cotton and organic hemp. Linked-on tubular rib crew neck and cutaway armholes. Lingerie loops. Self-start hem. Fully fashioned. Unlined. Length: 22".

A	B	C	D	E	F
S	M	S	M	S	M

52% Supima Cotton, 34% Organic Hemp, 14% Nylon

60 MALIBU \$195

4-KN-3156 XS-XL SEMI FITTED

Faded Rose



Linen-blend, jersey knit tank top in a breezy tape yarn. Front and back scoop neck. Front full-fashion jersey accents. Linked-on rib-knit hem. Lingerie loops. Fully fashioned. Unlined. Length: 22".

A	B	C	D	E	F
L	S	XS	L	S	M

40% Linen, 33% Cotton, 27% Nylon

63 LAGUNA-ORN \$85

4-TP-3416 XS-XL FITTED

Burnt Sienna



Tank top in premium stretch cotton jersey knit. Portrait neck and armholes have self tubular trim and single-needle finish. Lingerie loops. Self bend-back hem with double-needle cover stitch. Unlined. Length: 23 1/2".

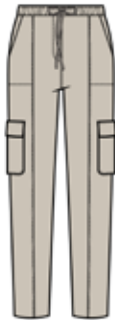
A	B	C	D	E	F
XL	L	M	S	XS	M

95% Cotton, 5% Elastane

61 CAPITOLA \$295

4-PT-3141 OO-16 STRAIGHT LEG GRACE EASY FIT

Ancient Scroll



Pull-on ankle-length cargo pants in ultra-stretch nylon suiting. Applied waistband with self facing, encased elastic, ties, and rubber aglets. Front and back patch pockets. Flap patch thigh pockets. Front and back princess seams. Unlined. Front rise: 11". Inseam: 28". Leg opening: 13 3/8".

A	B	C	D	E	F
4	6	8	10	6	2

90% Nylon, 10% Spandex

64 TAHITI \$295

4-SK-3139 OO-16 PENCIL SHAPE CLASSIC FIT

Burnt Sienna, Ancient Scroll, Cashew, Faded Rose



Stretch silk satin sarong wrap skirt in a stylized floral woodcut print with pleats and side waist tie. Applied waistband sits at the natural waist and extends into a self tie. Angled front pleating merges at the side closure. Inside button and snap closures. Back shaping darts. Baby hem. Lined. Length: 25 1/4".

A	B	C	D	E	F
2	4	6	2	4	6

92% Silk, 8% Spandex

65 RIPPLES

\$275

4-KN-2896

XS-XL

EASY FIT

Ancient Scroll



Linen-blend, open-front knit cardigan in an oversized transfer rib with breezy, drop needle stitch columns in between. Wide linked-on, full-Milano placket, cuffs, and hem. Drop shoulders. Fully fashioned. Unlined. Length: 24 1/4".

A	B	C	D	E	F
M	L	S	M	L	S

62% Linen, 38% Viscose

68 SEA CAMPION

\$295

4-KN-2824

XS-XL

CLASSIC FIT

Ancient Scroll



Pullover knit linen top in an oversized pointelle transfer stitch with seed-stitch floral details. Linked-on full-Milano crew neck, cuffs, and hem. Placed oversized sea campion flowers. Long sleeves. Cami with adjustable straps. Lingerie loops. Fully fashioned. Unlined. Length: 24 1/2".

A	B	C	D	E	F
S	M	L	S	M	L

100% Linen

71 CORSICAN

\$250

4-KN-3317

XS-XL

SEMI FITTED

Ancient Scroll



Pullover knit top in asymmetrical sections of smooth jersey, pointelle, and reverse-jersey drop stitches. Linked-on flat back rib crew neck and cuffs. Tubular jersey hem. Lingerie loops. Fully fashioned. Unlined. Length: 23 1/2".

A	B	C	D	E	F
M	L	S	M	L	S

54% Cotton, 45% Recycled Nylon, 1% Nylon

66 LAGUNA-BGE

\$85

4-TP-3415

XS-XL

FITTED

Ancient Scroll



Tank top in premium stretch cotton jersey knit. Portrait neck and armholes have self tubular trim and single-needle finish. Lingerie loops. Self bend-back hem with double-needle cover stitch. Unlined. Length: 23 1/2".

A	B	C	D	E	F
L	M	S	XS	M	XL

95% Cotton, 5% Elastane

69 SUMMER PLACE

\$325

4-TP-3147

00-16

CLASSIC FIT

Off White, Sunburn, Coral Gold, Grey Green



Linen-blend shirt in an open plain weave with yarn-dyed stripes. Solid white stretch cotton sateen stand collar, placket, and cuffs. Exposed collar button. Placket with hidden troca shell buttons. Two-button cuffs. Lingerie loops. Side slits. Adjustable cotton voile cami. Length: 26 1/2".

A	B	C	D	E	F
10	2	2	4	6	8

Self: 55% Linen, 45% Cotton. Combo: 98 Cotton, 2% Spandex. Lining: 100% Cotton

67 TRIESTE

\$250

4-PT-3151

00-16

STRAIGHT LEG

LINA CLASSIC FIT

Faded Rose



Ankle-length jeans in garment-washed stretch denim. Applied waistband with belt loops sits at the natural waist. Fly-front with tack button. Five-pocket styling with rivets. Antique brass hardware. Back shaping yoke. Unlined. Front rise: 11 1/2". Inseam: 30". Leg opening: 16".

A	B	C	D	E	F
6	8	10	6	2	4

53% Cotton, 45% Lyocell, 2% Spandex

70 MONTENEGRO

\$395

4-DR-3154

00-16

A-LINE SHAPE

CLASSIC FIT

Ivory, Ancient Scroll, Faded Rose, Gold, Coral Almond, Coral Gold, Warm Olive, Sunburn



Striped jacquard halter dress. Stand collar with white and gold shank button, inside placket, and armhole gussets in ivory. Hidden, self-covered snaps. Self bias binding at armholes. 75" natural rope belt with aglets and loops. Shiny soft gold hardware. Side-seam pockets. Unlined. Dress length: 49". Skirt length: 31 1/2".

A	B	C	D	E	F
6	8	10	10	2	4

99% Rayon, 1% Polyester

R CAPITOLA

\$295

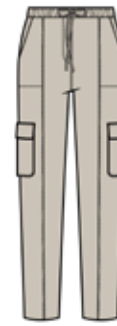
4-PT-3141

00-16

STRAIGHT LEG

GRACE EASY FIT

Ancient Scroll



Pull-on ankle-length cargo pants in ultra-stretch nylon suiting. Applied waistband with self facing, encased elastic, ties, and rubber aglets. Front and back patch pockets. Flap patch thigh pockets. Front and back princess seams. Unlined. Front rise: 11". Inseam: 28". Leg opening: 13 3/8".

A	B	C	D	E	F
4	6	8	10	6	2

90% Nylon, 10% Spandex



A



B

A
 4-TP-3416 LAGUNA-ORN \$85
 4-SK-3139 TAHITI \$295

B
 4-KN-2747 TROUVILLE \$225
 2-PT-4362 BERBER \$195

C
 2-TP-3429 TUSCANY-RED \$110
 2-SK-3050 BERBER \$235

D
 4-TP-3138 TAHITI \$250
 4-SK-3139 TAHITI \$295



C



D



E



F

E
 4-KN-2824 SEA CAMPION \$295
 4-PT-3141 CAPITOLA \$295

F
 4-KN-3317 CORSICAN \$250
 2-PT-3028 VALIANT \$295
 2-SC-2973 CLARITY \$175

G
 4-KN-2896 RIPPLES \$275
 4-TP-3415 LAGUNA-BGE \$85
 4-PT-3100 SAND DOLLAR \$275
 2-SC-2973 CLARITY \$175

H
 2-KN-2697 SAN MARCO \$265
 4-PT-3151 TRIESTE \$250



G



H

72 SAND DOLLAR \$495
4-JK-2976 00-16

CLASSIC FIT

Ancient Scroll



Tailored cutaway blazer in stretch cotton suiting with round sand dollar insets in open crochet. Notched collar, lapels, and front with wide self facing. Ancient scroll corozo buttons at front closure and sleeve vents. Welt pockets. Front and back princess seams. Shoulder pads. Back vent. Lined. Length: 28 3/4".

A	B	C	D	E	F
6	8	4	6	8	4

Self: 97% Cotton, 3% Spandex. Combo: 97% Cotton, 3% Nylon

75 BEACHCOMBER \$325
4-DR-3114 00-16

SHIFT SHAPE

EASY FIT

Ivory, Faded Rose, Ancient Scroll, Hot Sauce



Dress in yarn-dyed striped stretch cotton shirting, with solid white stand collar, placket, and side-slit frames. Natural nautical rope laces up with shiny soft gold ring, D-rings, and aglets. Dolman short sleeves. Drop shoulders. Two-ply back yoke. Self bend-back hem. Unlined. Dress length: 38". Skirt length: 20 1/2".

A	B	C	D	E	F
10	10	2	4	6	8

Self: 63% Cotton, 14% Viscose, 20% Polyester, 3% Spandex. Combo: 97% Cotton, 3% Spandex

76 MONACO \$360
4-JK-3115 XS-XL

EASY FIT

Light Ancient Scroll



Jacket in cotton crochet mesh with all-over cosmos-flower embroidery. Jewel neck, placket, cuffs, center back seam, and hem with top-applied crochet binding. Three shiny light gold hook and eye closures. 3/4 sleeves. Unlined. Length: 21 1/2".

A	B	C	D	E	F
M	S	L	S	M	S

Self: 100% Cotton. Combo: 97% Cotton, 3% Nylon

73 LONG BEACH \$225
4-TP-3140 00-16

CLASSIC FIT

Ancient Scroll, White



Cotton tank blouse in a micro-stripe, fil coupé jacquard features nautical ship's wheel, anchor, chain, and rigging motifs. Seed-stitch knit ring collar in linen-cooled cotton with a matching back crochet button and elastic loop. Back kissing slit. Side slits. Self baby hem. Cotton voile lined. Length: 24".

A	B	C	D	E	F
4	6	8	10	2	2

Shell: 100% Cotton. Combo: 39% Linen, 31% Cotton, 30% Nylon. Lining: 100% Cotton

R LAGUNA-BLK \$85
4-TP-3413 XS-XL

FITTED

Black



Tank top in premium stretch cotton jersey knit. Portrait neck and armholes have self tubular trim and single-needle finish. Lingerie loops. Self bend-back hem with double-needle cover stitch. Unlined. Length: 23 1/2".

A	B	C	D	E	F
M	S	XS	M	XL	L

95% Cotton, 5% Elastane

77 SURFSIDE \$375
4-DR-3142 00-16

SHIFT SHAPE

CLASSIC FIT

Ancient Scroll, Teak



Linen-cooled cotton shift dress in a rose damask jacquard. Straight neck with self facing. Hidden back zipper. Adjustable straps with shiny, light gold rings and sliders. Front and back princess seams. On-seam side pockets. Lingerie loops. Self bend-back hem. Cotton voile lined. Dress length: 37 1/2". Skirt length: 21 1/2".

A	B	C	D	E	F
4	2	8	6	6	10

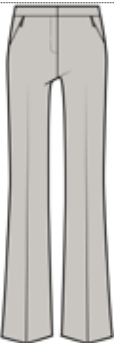
60% Cotton, 40% Linen. Lining: 100% Cotton

74 SAND DOLLAR \$275
4-PT-3100 00-16

BOOTCUT LEG

RITA CLASSIC FIT

Ancient Scroll



Full-length pants in stretch cotton suiting. Applied waistband with self facing. Fly-front. Front angled hidden-zipper pockets. Back welt faux pockets. Back shaping darts. Self bend-back hem. Unlined. Front rise: 11 1/4". Inseam: 34". Leg opening: 21".

A	B	C	D	E	F
4	6	8	10	8	2

97% Cotton, 3% Spandex

R PASSAGE-BLK \$165
2-PT-3638 XS-XL

WIDE LEG

GRACE EASY FIT

Black



Full-length, pull-on lounge pants in stretch cotton jersey knit. Applied two-ply waistband with encased elastic. Angled front pockets. Self bend-back hem. Cut and sew. Unlined. Front rise: 10 1/8". Inseam: 34". Leg opening: 20 1/2".

A	B	C	D	E	F
S	M	S	M	S	M

95% Cotton, 5% Elastane

78 SANDPIPER \$275
4-DR-3117 XS-XL

SHEATH SHAPE

SEMI FITTED

Black, Ancient Scroll



This two-color jacquard knit dress features stripes in pointelle, transfer, reverse jersey, racking, and tuck stitches in a linen-blend tape yarn. Linked-on crew neck and armholes. Rib-knit hem. Lingerie loops. Fully fashioned. Unlined. Dress length: 36". Skirt length: 20".

A	B	C	D	E	F
M	S	M	S	M	S

39% Linen, 31% Cotton, 30% Nylon

79 GULF STREAM **\$325**

4-KN-3152 XS-XL **CLASSIC FIT**

English Blue, Nightshadow Blue, Navy



Linen-blend, open-front knit cardigan in an ombré intarsia of jersey and reverse-jersey ribs. Linked-on full-Milano V-front and back necks, front edge, and cuffs. Self-start hem. Bracelet sleeves. Fully fashioned. Unlined. Length: 30".

A	B	C	D	E	F
XS	S	M	XS	S	M

90% Linen, 10% Nylon

82 ANTIBES **\$250**

4-TP-3144 OO-16 **EASY FIT**

Nightshadow Blue



Cotton gauze pullover getaway blouse. Slit jewel neck with wide self facing is laced with a black satin cord. Shiny light gold aglets. Dolman elbow sleeves with chic tapered cuffs. Self bend-back hem. Unlined. Length: 25".


A	B	C	D	E	F
6	8	10	10	2	4

100% Cotton

85 RIVIERA **\$295**

4-KN-2903 XS-XL **EASY FIT**

English Blue



Crochet-look cotton-blend knit pullover in a corded yarn in mixed open transfer stitches with rows of open miss stitches. Linked-on ribbed crew neck. Raglan bracelet sleeves. Wide scalloped pointelle-stitch cuffs and hem. Fully fashioned. Unlined. Length: 22 1/4".

A	B	C	D	E	F
S	M	XL	S	M	XS

74% Cotton, 26% Nylon

80 GULF STREAM **\$235**

4-KN-2826 XS-XL **FITTED**

English Blue, Nightshadow Blue, Navy



Linen-blend pullover knit shell in an ombré intarsia of jersey and reverse-jersey ribs. Linked-on tubular jersey scoop neck and cutaway armholes. Self-start hem. Fully fashioned. Unlined. Length: 23 1/4".

A	B	C	D	E	F
XS	S	M	XS	S	M

90% Linen, 10% Nylon

83 CANNES **\$235**

4-TP-3116 OO-16 **CLASSIC FIT**

White, Nightshadow Blue



White cotton plain weave pullover blouse with all-over nightshadow blue-embroidered dahlia, hibiscus, lily, peony, and primrose flowers. Banded split neck, framed with nightshadow oval lace insets. Bracelet sleeves are Shirred at the white trocassell button cuffs. Unlined. Length: 27 3/4".

A	B	C	D	E	F
8	10	12	2	4	6

100% Cotton

86 TUSCANY-DKBL **\$110**

2-TP-3431 XS-XL **CLASSIC FIT**

Nightshadow Blue



Banded scoop neck stretch cotton jersey tee shirt. Short sleeves. Curved hem. Bend-back cuffs and hem with double-needle cover stitching. Cut and sew. Unlined. Length: 24".

A	B	C	D	E	F
M	L	S	M	L	S

95% Cotton, 5% Elastane

81 GULF STREAM **\$250**

4-PT-3153 XS-XL **WIDE LEG** **GLORIA CLASSIC FIT**

Nightshadow Blue



Cropped-length, pull-on knit lounge pants in a jersey and reverse jersey rib texture. Applied full-Milano tubular waistband with encased elastic. Unlined. Front rise: 10 3/4". Inseam: 26 3/4". Leg opening: 19".

A	B	C	D	E	F
S	M	S	M	S	M

51% Cotton, 34% Viscose, 15% Nylon

84 ANTIBES **\$235**

4-PT-3145 OO-16 **WIDE LEG** **FARRAH CLASSIC FIT**

Nightshadow Blue



Cotton gauze getaway shorts. Applied waistband. Fly-front. Angled front pockets with self facing. Back shaping darts. Self bend-back hem. Unlined. Front rise: 10 1/2". Inseam: 7". Leg opening: 27".

A	B	C	D	E	F
2	4	6	8	10	2

100% Cotton



A
 4-JK-2976 SAND DOLLAR \$495
 2-TP-3043 MINARET \$295
 4-PT-3100 SAND DOLLAR \$275

B
 4-JK-3115 MONACO \$360
 4-DR-3142 SURFSIDE \$375

C
 4-TP-3413 LAGUNA-BLK \$85
 2-PT-2831 IDYLL \$250
 2-SC-2971 DAISIES \$175

D
 4-DR-3117 SANDPIPER \$275





E



F

E
 4-KN-3152 GULF STREAM \$325
 2-TP-3431 TUSCANY-DKBL \$110
 4-PT-3153 GULF STREAM \$250
 2-SC-2973 CLARITY \$175

F
 4-TP-3144 ANTIBES \$250
 4-PT-3145 ANTIBES \$235

G
 4-KN-3152 GULF STREAM \$325
 4-KN-2826 GULF STREAM \$235
 2-PT-3640 PASSAGE-NVY \$165

H
 4-KN-2903 RIVIERA \$295
 4-PT-2963 FIRST MATE \$250



G



H



etcetera

ETC - ESSENTIALS

87 AEGIS-BLK

\$229

2-TP-1439

00-16

CLASSIC FIT

Black



Two-layer georgette camisole with adjustable straps and open mesh insets in front and back. V-neck. Back adjustable camisole straps. Side slits at underlayer. Unlined. Underlayer length: 21".

A	B	C	D	E	F
L	S	M	S	M	XS

100% Polyester

90 ESSENCE-WHT

\$99

2-TP-148

XS-XL

FITTED

White



Stretch cotton tee shirt. Crew neck with jersey curl trim. Cap sleeves with jersey curl cuffs. Raw edged center back seam with double needle topstitching. Cover-stitched hem. Unlined. Length: 25".

A	B	C	D	E	F
M	L	S	M	L	S

95% Cotton, 5% Elastane

93 CLEVER-BLK

\$129

2-TP-2303

XS-XL

SEMI FITTED

Black



Jersey knit tee shirt in stretch cotton. Banded crew neck with coverstitching and inside self binding. Long sleeves. Cut and sew. Topstitched side slits. Unlined. Length: 24 1/2".

A	B	C	D	E	F
M	L	S	M	M	XS

95% Cotton, 5% Spandex

88 ZOOM-IVR

\$129

2-TP-867

XS-XL

FITTED

Ivory



Tank top in silky stretch jersey. Clean-finished V-neck, cutaway armholes and front hem. Back stand collar with shirring. Encased elastic at back shoulder seam and armholes. Pullover. Cut and sew. Lined in front. Length: 24".

A	B	C	D	E	F
M	L	M	S	S	S

97% Rayon, 3% Spandex

91 ESSENCE-BLK

\$99

2-TP-864

XS-XL

FITTED

Black



Stretch cotton tee shirt. Crew neck with jersey curl trim. Cap sleeves with jersey curl cuffs. Raw edged center back seam with double needle topstitching. Cover-stitched hem. Unlined. Length: 25".

A	B	C	D	E	F
S	M	L	S	M	L

95% Cotton, 5% Elastane

94 CLEVER-WHT

\$129

2-TP-2305

XS-XL

SEMI FITTED

White



Jersey knit tee shirt in stretch cotton. Banded crew neck with coverstitching and inside self binding. Long sleeves. Cut and sew. Topstitched side slits. Unlined. Length: 24 1/2".

A	B	C	D	E	F
S	M	L	XS	XS	M

95% Cotton, 5% Spandex

89 NORA

\$229

2-TP-103

00-16

CLASSIC FIT

White



White high-low shirt in stretch sateen. Shirt collar. Placket with white pearlized buttons. Set-in sleeves. Two-button cuffs. Topstitching. Side slits. Unlined. Front length: 25". Back length: 28".

A	B	C	D	E	F
4	6	12	2	4	6

98% Cotton, 2% Spandex

92 ESSENCE-NVY

\$99

2-TP-865

XS-XL

FITTED

Navy



Stretch cotton tee shirt. Crew neck with jersey curl trim. Cap sleeves with jersey curl cuffs. Raw edged center back seam with double needle topstitching. Cover-stitched hem. Unlined. Length: 25".

A	B	C	D	E	F
L	S	M	L	S	M

95% Cotton, 5% Elastane

95 CLEVER-NVY

\$129

2-TP-2304

XS-XL

SEMI FITTED

Navy



Jersey knit tee shirt in stretch cotton. Banded crew neck with coverstitching and inside self binding. Long sleeves. Cut and sew. Topstitched side slits. Unlined. Length: 24 1/2".

A	B	C	D	E	F
L	S	M	L	L	XL

95% Cotton, 5% Spandex

96 WANDERLUST-WHT \$199

2-PT-874 00-16

SLIM LEG TWIGGY SLIM FIT



White

Ankle-length jeans in combed cotton with a soft peached finish. Applied waistband with belt loops sits 2" below the natural waist. Fly-front with polished nickel tack button. Five pocket styling with polished nickel rivets. Unlined. Front Rise: 10 1/2". Inseam: 31"; Leg opening: 11".

A	B	C	D	E	F
12	4	10	8	6	2

98% Cotton, 2% Spandex

99 HOLLYWOOD-WHT \$229

2-PT-850 00-16

SLIM LEG AUDREY SEMI FITTED



White

Cropped-length pants in soft, peached, two-way stretch cotton. Sleek, no-waistband style is pitched 2" below the natural waist in front and 1" in back. Hidden side zipper. Ankle slits. Unlined. Front Rise: 9 3/4". Inseam: 27"; Leg opening: 13".

A	B	C	D	E	F
		8	12	2	2

57% Cotton, 37% Viscose, 6% Spandex

102 HOLLYWOOD-NVY \$229

2-PT-853 00-16

SLIM LEG AUDREY SEMI FITTED



Navy

Cropped-length pants in soft, peached, two-way stretch cotton. Sleek, no-waistband style is pitched 2" below the natural waist in front and 1" in back. Hidden side zipper. Ankle slits. Unlined. Front Rise: 9 3/4". Inseam: 27"; Leg opening: 13".

A	B	C	D	E	F

57% Cotton, 37% Viscose, 6% Elastane

97 WANDERLUST-BLK \$199

2-PT-872 00-16

SLIM LEG TWIGGY SLIM FIT



Black

Ankle-length jeans in combed cotton with a soft peached finish. Applied waistband with belt loops sits 2" below the natural waist. Fly-front with polished nickel tack button. Five pocket styling with polished nickel rivets. Unlined. Front Rise: 10 1/2". Inseam: 31"; Leg opening: 11".

A	B	C	D	E	F
			4		12

98% Cotton, 2% Spandex

100 HOLLYWOOD-BLK \$229

2-PT-854 00-16

SLIM LEG AUDREY SEMI FITTED



Black

Cropped-length pants in soft, peached, two-way stretch cotton. Sleek, no-waistband style is pitched 2" below the natural waist in front and 1" in back. Hidden side zipper. Ankle slits. Unlined. Front Rise: 9 3/4". Inseam: 27"; Leg opening: 13".

A	B	C	D	E	F
2	12				

57% Cotton, 37% Viscose, 6% Spandex

103 CASPIAN-WHT \$179

2-TP-149 XS-XL

FITTED



White

Sleeveless cut-and-sew jersey tank top. Fitted. Pullover. Round neck. Keyhole at back neck with 1 button closure. Clean finish at front armhole, self binding at back armhole. Turnover 1/8" double-needle topstitch detailing at hemline. Length: 25". Also in navy and black.

A	B	C	D	E	F
S	M	L	S	M	L

95% Cotton, 5% Elastane

98 WANDERLUST-IVR \$199

2-PT-306 00-16

SLIM LEG TWIGGY SLIM FIT



Ivory

Ankle-length jeans in combed cotton with a soft peached finish. Applied waistband with belt loops sits 2" below the natural waist. Fly-front with tack button. Five pocket styling with rivets. Polished nickel hardware. Unlined. Front Rise: 10 1/2". Inseam: 31"; Leg opening: 11".

A	B	C	D	E	F
6	10	4		12	

98% Cotton, 2% Spandex

101 HOLLYWOOD-GRY \$229

2-PT-1432 00-16

SLIM LEG AUDREY SEMI FITTED



Oyster Mushroom

Cropped-length pants in soft, peached, two-way stretch cotton twill. Sleek, no-waistband style is pitched 2" below the natural waist in front and 1" in back. Hidden side zipper. Ankle slits. Unlined. Front Rise: 9 3/4". Inseam: 27"; Leg opening: 13".

A	B	C	D	E	F
8	4	4	6	8	10

57% Cotton, 37% Viscose, 6% Elastane



etcetera

GUIDES

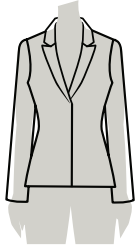
JACKETS GUIDE

FIT

F

FITTED

Slim fit through bust, waist, and hip.



FITTED

C

CLASSIC

Generous fit through bust, waist, and hip.

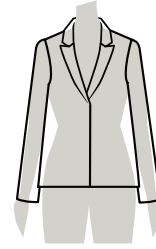


CLASSIC

E

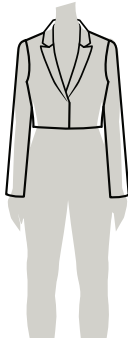
EASY

Relaxed fit through bust, waist, and hip.



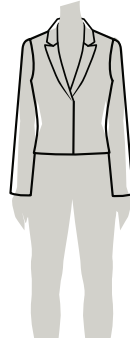
EASY

LENGTH



CROPPED

Hits above the hip bone.
20"



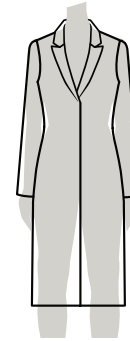
SHORT

Hits at high hip.
21" - 23"



HIP LENGTH

Hits at low hip.
24" - 26"



TOPPER

Hits below hip.
29" and up

SF

SEMI FITTED

Follows the contours of the body, with a little ease at the waist.



DREAMSCAPE

2-JK-2791

LENGTH: 41"

A	B	C	D	E	F
12	2	4	6	8	10

Metallic Gold, Ivory

Self: 65% Rayon, 20% Nylon, 10% Polyester, 5% Spandex. Combo: 55% Rayon, 45% Viscose

C

CLASSIC

Generous fit through bust, waist, and hip.



CALLIOPE

2-JK-3036

LENGTH: 20"

A	B	C	D	E	F
4	6	8	4	6	8

Black

Self: 100% Nylon, Combo: 97% Polyester, 3% Spandex



JULIA

2-JK-2974

LENGTH: 21"

A	B	C	D	E	F
XS-S	M-L	XS-S	M-L	XS-S	M-L

Ivory

100% Acrylic



ODYSSEY

2-JK-2867

LENGTH: 21 1/2"

A	B	C	D	E	F
2	4	6	8	10	12

White

98% Cotton, 2% Spandex



BASKERVILLE

2-JK-2882

LENGTH: 23"

A	B	C	D	E	F
2	4	6	8	10	12

Brilliant White, Black

98% Cotton, 2% Spandex



LALLA

2-JK-3047

LENGTH: 23"

A	B	C	D	E	F
8	4	6	8	4	6

Washed Indigo, Gold

99% Cotton, 1% Spandex



BRANDY HALL

2-JK-2782

LENGTH: 23 1/4"

A	B	C	D	E	F
6	8	10	12	2	4

Cashew

69% Polyester, 30% Viscose, 1% Elastane

C

CLASSIC

Generous fit through bust, waist, and hip.

CONTINUED



ASTILBE
2-JK-2803

LENGTH: 24"

A	B	C	D	E	F
10	12	2	4	6	8

Pink Flambe

Self: 97% Cotton, 3% Elastane. Knit Insert: 100% Cotton



RANUNCULUS
2-JK-2836

LENGTH: 24"

A	B	C	D	E	F
12	2	4	6	8	10

Black, Nude

Self: 100% Polyester. Lining: 100% Polyester



SAINT-TROPEZ
4-JK-2721

LENGTH: 24"

A	B	C	D	E	F
4	6	8	10	12	2

Navy, Ivory

65% Viscose, 17% Polyester, 15% Nylon



PSYCHE
2-JK-2856

LENGTH: 24 1/4"

A	B	C	D	E	F
8	10	12	2	4	6

White

100% Genuine Leather



CRETE
2-JK-2851

LENGTH: 25"

A	B	C	D	E	F
6	8	10	12	2	4

Strong Blue

60% Cotton, 30% Polyamide, 10% Metallic



NIGHT ROSE
2-JK-2819

LENGTH: 25"

A	B	C	D	E	F
10	12	2	4	6	8

Black

100% Genuine Leather



RHAPSODIC
2-JK-2548

LENGTH: 25"

A	B	C	D	E	F
12	2	4	6	8	10

Golden Poppy

Self: 100% Polyester. Lining: 93% Nylon, 7% Spandex



CONVERSATION
2-JK-2798

LENGTH: 26 1/2"

A	B	C	D	E	F
10	12	2	4	6	8

Black, Pink Flambe, Vibrant Green, Golden Poppy, Blue Atoll

48% Recycled Polyester, 48% Viscose, 4% Elastane



AGORA
2-JK-2861

LENGTH: 28"

A	B	C	D	E	F
8	10	12	2	4	6

White, Navy, Serenity Blue

Self: 69% Polyester, 22% Rayon, 9% Spandex. Combo: 63% Polyester, 27% Viscose, 7% Cotton, 3% Elastane



PEMBERLEY
2-JK-2545

LENGTH: 28 1/2"

A	B	C	D	E	F
4	6	8	10	12	2

Mayfly Olive

Self: 100% Polyester. Combo: 70% Polyester, 30% Rayon



SAND DOLLAR
4-JK-2976

LENGTH: 28 3/4"

A	B	C	D	E	F
6	8	4	6	8	4

Ancient Scroll

Self: 97% Cotton, 3% Spandex. Combo: 97% Cotton, 3% Nylon



MARSEILLE
4-JK-2718

LENGTH: 30"

A	B	C	D	E	F
4	6	8	10	12	2

Indigo, Ivory

90% Cotton, 10% Polyester. Exclusive of Trim



MYTHICAL
2-JK-2853

LENGTH: 30"

A	B	C	D	E	F
8	10	12	2	4	6

Navy, White

Self: 97% Cotton, 3% Spandex. Combo: 85% Nylon, 15% Spandex



CHATTERLEY
2-JK-2767

LENGTH: 30 1/4"

A	B	C	D	E	F
2	4	6	8	10	12

Mayfly Olive

75% Rayon, 25% Polyester

E

EASY

Relaxed fit through bust, waist, and hip.



MONACO
4-JK-3115

LENGTH: 21 1/2"

A	B	C	D	E	F
M	S	L	S	M	S

Light Ancient Scroll

Self: 100% Cotton. Combo: 97% Cotton, 3% Nylon



BAR HARBOR
4-OW-2729

LENGTH: 25"

A	B	C	D	E	F
12	2	4	6	8	10

Navy

100% Polyester



WAVE HILL
2-OW-3642

LENGTH: 40"

A	B	C	D	E	F
S	M	L	S	M	L

Navy

53% Silk, 47% Cotton

FIT

F

FITTED

Hugs the contours of the body; styles with sleeves have a smaller shoulder and higher armhole.

SF

SEMI FITTED

Follows the contours of the body, with a little ease at the waist. Sits on the shoulder.

C

CLASSIC

Not too slim, nor too loose. Fits the bust comfortably and the waist is not too shaped. Sits on the shoulder.

E

EASY

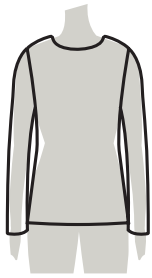
Relaxed fit through bust, waist, and hips. Some styles may even have a lot of gathers and fullness.

O

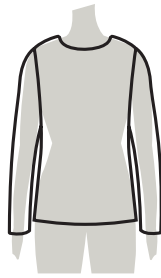
OVERSIZED

It is a very roomy, cozy style that is big overall.

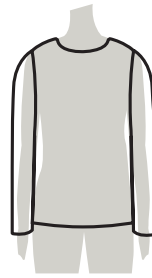
SILHOUETTES



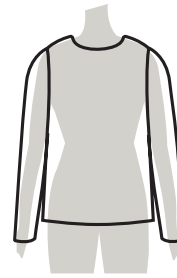
FITTED



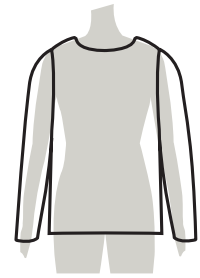
SEMI FITTED



CLASSIC



EASY



OVERSIZED

ALL LENGTHS ARE MEASURED FROM THE HIGH POINT SHOULDER

F

FITTED

Hugs the contours of the body; styles with sleeves have a smaller shoulder and higher armhole.



TROUVILLE

4-KN-2747

LENGTH: 22"

A	B	C	D	E	F
S	M	S	M	S	M

Faded Rose, Coral Gold

52% Supima Cotton, 34% Organic Hemp, 14% Nylon



POLARIS

2-KN-2666

LENGTH: 23 1/4"

A	B	C	D	E	F
M	L	S	M	L	S

Black

85% Cotton, 15% Polyester



GULF STREAM

4-KN-2826

LENGTH: 23 1/4"

A	B	C	D	E	F
XS	S	M	XS	S	M

English Blue, Nightshadow Blue, Navy

90% Linen, 10% Nylon



MEDINA

2-KN-2665

LENGTH: 24"

A	B	C	D	E	F
S	M	L	S	M	L

Sugar Swizzle Ivory, Pink Flambe, Powder Pink

51% Cotton, 42% Recycled Nylon, 4% Organic Cotton, 3% Lyocell



SAN MARCO

2-KN-2697

LENGTH: 24 1/4"

A	B	C	D	E	F
L	S	M	L	S	M

Sugar Swizzle Ivory

55% Cotton, 45% Recycled Nylon

SF

SEMI FITTED

Follows the contours of the body, with a little ease at the waist. Sits on the shoulder.



CONVERGE-IVR

2-KN-2972

LENGTH: 16 3/8"

A	B	C	D	E	F
L	S	M	L	S	M

Ivory

51% Cotton, 40% Nylon, 6% Spandex, 3% Cashmere



TAJINE

2-KN-2978

LENGTH: 17 1/2"

A	B	C	D	E	F
S	M	S	XL	S	M

Cashew

37% Linen, 34% Cotton, 29% Nylon



CORINTHIAN

2-KN-2699

LENGTH: 21 1/2"

A	B	C	D	E	F
M	L	S	M	L	S

White

43% Cotton, 35% Linen, 19% Recycled Polyester, 3% Nylon



MALIBU

4-KN-3156

LENGTH: 22"

A	B	C	D	E	F
L	S	XS	L	S	M

Faded Rose Heather

40% Linen, 33% Cotton, 27% Nylon



SURGING

4-KN-2719

LENGTH: 22"

A	B	C	D	E	F
M	L	S	M	L	S

Navy, Ivory

98% Cotton, 2% Nylon



CORSICAN

4-KN-3317

LENGTH: 23 1/2"

A	B	C	D	E	F
M	L	S	M	L	S

Ancient Scroll

54% Cotton, 45% Recycled Nylon, 1% Nylon



FREEPORT

2-KN-2680

LENGTH: 23 1/2"

A	B	C	D	E	F
L	S	M	L	S	M

White, Black

93% Cotton, 4% Viscose, 3% Nylon



DIANTHUS

2-KN-2672

LENGTH: 23 5/8"

A	B	C	D	E	F
S	M	L	S	M	L

Pink Flambe

64% Viscose, 33% Nylon, 3% Spandex

C

CLASSIC

Not too slim, nor too loose. Fits the bust comfortably and the waist is not too shaped. Sits on the shoulder.



EXUBERANCE

2-KN-2683

LENGTH: 10"

A	B	C	D	E	F
L	S	M	L	S	M

Jelly Bean, Biscotti, Mayfly Olive, Blue Atoll, Golden Poppy, Coral Rose, Teaberry
56% Cotton, 39% Recycled Nylon, 3% Recycled Polyester, 2% Nylon



SANTORINI-CARDI

2-KN-2664

LENGTH: 17"

A	B	C	D	E	F
L	S	M	L	S	M

Persian Blue
55% Cotton, 45% Recycled Nylon



SANTORINI-SHELL

2-KN-2688

LENGTH: 18 1/2"

A	B	C	D	E	F
L	S	M	L	S	M

Persian Blue
52% Cotton, 43% Recycled Nylon, 4% Nylon, 1% Spandex



RHODES-SHELL

2-KN-2912

LENGTH: 19"

A	B	C	D	E	F
S	M	L	S	M	L

Navy
54% Cotton, 44% Recycled Nylon, 2% Nylon



SHIMMER

2-KN-2679

LENGTH: 19 1/2"

A	B	C	D	E	F
XL	S	M	L	XL	S

Black
97% Silk, 3% Nylon



GRANDIFLORA

2-KN-2674

LENGTH: 20 3/4"

A	B	C	D	E	F
M	XL	S	M	XL	S

Serenity Blue, White
44% Cotton, 36% Linen, 20% Recycled Polyester



NICE

4-KN-2730

LENGTH: 21 1/4"

A	B	C	D	E	F
M	L	S	M	L	S

Navy, Ivory
79% Viscose, 21% Nylon



STARDRIFT

2-KN-2673

LENGTH: 21 5/8"

A	B	C	D	E	F
M	L	S	M	L	S

Blue Atoll
90% Cotton, 9% Nylon, 1% Spandex



NOTEBOOK

2-KN-2549

LENGTH: 22"

A	B	C	D	E	F
L	S	M	L	S	M

Persian Blue, Ivory, Cashew
53% Cotton, 44% Recycled Nylon, 3% Nylon



SABRINA

2-KN-2701

LENGTH: 23 3/4"

A	B	C	D	E	F
M	XS	S	M	L	S

Powder Pink, Sugar Swizzle Ivory, Cashew
50% Organic Cotton, 31% Lyocell, 11% Cotton, 5% Nylon, 3% Other Fibers



WINDWARD

4-KN-2754

LENGTH: 22 3/4"

A	B	C	D	E	F
M	L	S	M	L	S

English Blue Heathered
55% Cotton, 45% Lyocell



DRAGON FRUIT

2-KN-2930

LENGTH: 23"

A	B	C	D	E	F
L	S	M	L	S	M

Barbados Cherry
Knit Shell: 53% Cotton, 29% Nylon, 18% Modal, 5% Cashmere, 1% Spandex. Woven Collar: Outer Layer: 100% Polyester. Woven Collar Inner Layer: 92% Silk, 8% Spandex



PRESIDIO

4-KN-2725

LENGTH: 23"

A	B	C	D	E	F
XL	S	M	M	S	M

Faded Rose Heather
45% Linen, 35% Cotton, 20% Nylon



RHODES-CARDI

2-KN-2689

LENGTH: 23"

A	B	C	D	E	F
S	M	L	S	M	L

Navy
53% Cotton, 44% Recycled Nylon, 3% Nylon



STRAWFLOWER

2-KN-2695

LENGTH: 23"

A	B	C	D	E	F
S	M	L	S	M	L

White
93% Cotton, 4% Polyester, 3% Nylon



BARRYMORE

2-KN-2661

LENGTH: 23 1/4"

A	B	C	D	E	F
S	M	L	S	M	L

Black
65% Viscose, 32% Nylon, 3% Spandex



TAMARINDO

2-KN-2663

LENGTH: 23 1/2"

A	B	C	D	E	F
M	L	S	M	L	S

Mayfly Olive, Ivory
95% Silk, 4% Nylon, 1% Spandex



FLUTED

2-KN-2698

LENGTH: 24"

A	B	C	D	E	F
S	M	L	S	M	L

White
66% Viscose, 32% Nylon, 2% Spandex



MONTAUK

4-KN-2827

LENGTH: 24"

A	B	C	D	E	F
L	S	M	L	S	M

Ivory, Indigo Heather
92% Cotton, 7% Nylon, 1% Modal



TANDEM

2-KN-2675

LENGTH: 24"

A	B	C	D	E	F
M	L	S	M	L	S

Mayfly Olive, Ivory
55% Cotton, 45% Recycled Nylon



ASPHODEL

2-KN-2692

LENGTH: 24 1/2"

A	B	C	D	E	F
S	M	XL	XL	M	L

Navy
55% Cotton, 45% Recycled Nylon



CRESTING

4-KN-2744

LENGTH: 24 1/2"

A	B	C	D	E	F
S	M	L	S	M	L

Navy, Sugar Swizzle
55% Cotton, 45% Recycled Nylon



BREEZY

4-KN-2737

LENGTH: 26"

A	B	C	D	E	F
M	L	S	M	L	S

Ivory
40% Linen, 33% Cotton, 27% Nylon



ON DECK

4-KN-2736

LENGTH: 26"

A	B	C	D	E	F
S	M	L	S	M	L

Ivory, Navy
55% Cotton, 45% Recycled Nylon



TESS

2-KN-2660

LENGTH: 26"

A	B	C	D	E	F
L	S	M	L	S	M

Blue Atoll
Self: 98% Linen, 2% Nylon. Camisole: 95% Rayon, 5% Spandex



TIDAL

4-KN-2722

LENGTH: 26"

A	B	C	D	E	F
M	L	S	M	L	S

Ivory, English Blue, Nightshadow Blue, Navy
85% Cotton, 11% Nylon, 2% Polyester, 2% Recycled Nylon



AEOLIAN

2-KN-2670

LENGTH: 27"

A	B	C	D	E	F
L	S	M	L	S	M

Cashew
54% Cotton, 46% Recycled Nylon



CATALINA

2-KN-2667

LENGTH: 27"

A	B	C	D	E	F
S	M	L	S	M	L

Persian Blue, Golden Poppy, Ivory
40% Linen, 33% Cotton, 27% Nylon



REGATTA

4-KN-2743

LENGTH: 27"

A	B	C	D	E	F
M	XL	L	S	M	XL

Ivory, Navy
60% Cotton, 40% Viscose



GULF STREAM

4-KN-3152

LENGTH: 30"

A	B	C	D	E	F
XS	S	M	XS	S	M

English Blue, Nightshadow Blue, Navy
90% Linen, 10% Nylon

KNITS GUIDE

E

EASY

Relaxed fit through bust, waist, and hips. Some styles may even have a lot of gathers and fullness.



MARINA
4-KN-2825

LENGTH: 21 1/2"

A	B	C	D	E	F
S	M	L	S	M	L

Wytke Blue, Oatmeal Heather, Parchment, Marona, Cardamom, Navy, Black

38% Cotton, 28% Nylon, 15% Modal, 8% Wool, 4% Acrylic, 4% Linen, 1% Cashmere, 1% Silk, 1% Spandex



INFLUENCER
2-KN-2681

LENGTH: 22"

A	B	C	D	E	F
M	S	M	S	M	S

Strong Blue Heathered

52% Organic Cotton, 33% Lyocell, 9% Cotton, 3% Nylon, 1% Spandex



RIVIERA
4-KN-2903

LENGTH: 22 1/4"

A	B	C	D	E	F
S	M	XL	S	M	XS

English Blue

74% Cotton, 26% Nylon



ATLAS
2-KN-2768

LENGTH: 23"

A	B	C	D	E	F
S	M	L	S	M	L

Sugar Swizzle Ivory, Metallic Gold, Mayfly Olive

43% Cotton, 35% Recycled Nylon, 12% Rayon, 6% Nylon, 4% Polyester



PAGEANTRY
2-KN-2770

LENGTH: 23 1/2"

A	B	C	D	E	F
L	S	M	L	XL	M

Sugar Swizzle Ivory, Mulch, Powder Pink

44% Cotton, 35% Recycled Nylon, 9% Viscose, 6% Organic Cotton, 4% Lyocell, 2% Nylon



RIPPLES
4-KN-2896

LENGTH: 24 1/4"

A	B	C	D	E	F
M	L	S	M	L	S

Ancient Scroll

62% Linen, 38% Viscose



PALM BEACH
2-KN-2691

LENGTH: 24 1/2"

A	B	C	D	E	F
M	L	S	M	L	S

Brilliant White

44% Cotton, 36% Linen, 20% Recycled Polyester



SEA CAMPION
4-KN-2824

LENGTH: 24 1/2"

A	B	C	D	E	F
S	M	L	S	M	L

Ancient Scroll

100% Linen



ANDROS
2-KN-2690

LENGTH: 26"

A	B	C	D	E	F
S	M	L	S	M	L

Cashew, Sugar Swizzle Ivory

62% Linen, 38% Viscose

FIT

F

FITTED

Slim fit through bust, waist, and hip.

C

CLASSIC

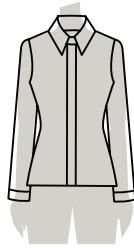
Generous fit through bust, waist, and hip.

E

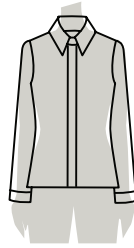
EASY

Relaxed fit through bust, waist, and hip.

SILHOUETTES



FITTED



CLASSIC



EASY

FIT

F

FITTED

Hugs the contours of the body; styles with sleeves have a smaller shoulder and higher armhole.

SF

SEMI FITTED

Follows the contours of the body, with a little ease at the waist. Sits on the shoulder.

C

CLASSIC

Not too slim, nor too loose. Fits the bust comfortably and the waist is not too shaped. Sits on the shoulder.

E

EASY

Relaxed fit through bust, waist, and hips. Some styles may even have a lot of gathers and fullness.

O

OVERSIZED

It is a very roomy, cozy style that is big overall.

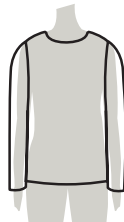
SILHOUETTES



FITTED



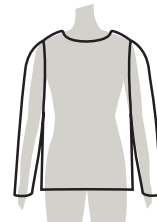
SEMI FITTED



CLASSIC



EASY



OVERSIZED

ALL LENGTHS ARE MEASURED FROM THE HIGH POINT SHOULDER

F

FITTED

Slim fit through bust, waist, and hip. Hugs the contours of the body; styles with sleeves have a smaller shoulder and higher armhole.



MYKONOS
2-TP-2913
LENGTH: 11"
A B C D E F
2 4 6 8 10 12
Strong Blue, White, Navy, Antique Moss
97% Cotton, 3% Spandex



LAGUNA-BGE
4-TP-3415
LENGTH: 23 1/2"
A B C D E F
L M S XS M XL
Ancient Scroll
95% Cotton, 5% Elastane



LAGUNA-BLK
4-TP-3413
LENGTH: 23 1/2"
A B C D E F
M S XS M XL L
Black
95% Cotton, 5% Elastane



LAGUNA-BLU
4-TP-3417
LENGTH: 23 1/2"
A B C D E F
S XL L M S XS
Serenity Blue
95% Cotton, 5% Elastane



LAGUNA-NVY
4-TP-3412
LENGTH: 23 1/2"
A B C D E F
S XS S XL L M
Navy
95% Cotton, 5% Elastane



LAGUNA-ORN
4-TP-3416
LENGTH: 23 1/2"
A B C D E F
XL L M S XS M
Burnt Sienna
95% Cotton, 5% Elastane



LAGUNA-WHT
4-TP-3155
LENGTH: 23 1/2"
A B C D E F
XS S XL L M S
White
95% Cotton, 5% Elastane



ZOOM-IVR
2-TP-867
LENGTH: 24"
A B C D E F
M L M S S S
Ivory
97% Rayon, 3% Spandex



CASPIAN-WHT
2-TP-149
LENGTH: 25"
A B C D E F
S M L S M L
White
95% Cotton, 5% Elastane



ESSENCE-BLK
2-TP-864
LENGTH: 25"
A B C D E F
S M L S M L
Black
95% Cotton, 5% Elastane



ESSENCE-NVY
2-TP-865
LENGTH: 25"
A B C D E F
L S M L S M
Navy
95% Cotton, 5% Elastane



ESSENCE-WHT
2-TP-148
LENGTH: 25"
A B C D E F
M L S M L S
White
95% Cotton, 5% Elastane

SF

SEMI FITTED

Follows the contours of the body, with a little ease at the waist. Sits on the shoulder.



CLEVER-BLK
2-TP-2303
LENGTH: 24 1/2"
A B C D E F
M L S M M XS
Black
95% Cotton, 5% Spandex



CLEVER-NVY
2-TP-2304
LENGTH: 24 1/2"
A B C D E F
L S M L L XL
Navy
95% Cotton, 5% Spandex



CLEVER-WHT
2-TP-2305
LENGTH: 24 1/2"
A B C D E F
S M L XS XS M
White
95% Cotton, 5% Spandex



TANGIER
2-TP-2855
LENGTH: 26"
A B C D E F
6 8 10 8 2 4
Navy, Sugar Swizzle Ivory, Brilliant White
87% Nylon, 13% Spandex

C

CLASSIC

Generous fit through bust, waist, and hip. Hugs the contours of the body; styles with sleeves have a smaller shoulder and higher armhole.



HALYARD
4-TP-2908
LENGTH: 19"
A B C D E F
12 2 4 6 8 10
Navy, Ivory
92% Polyester, 8% Spandex



CHAMOMILE
2-TP-2815
LENGTH: 20"
A B C D E F
6 8 10 12 2 4
Blue Atoll, Serenity Blue, Muted Navy, Muted Vibrant Green, Ivory, Navy
78% Rayon, 22% Polyester



PERGOLA
2-TP-2801
LENGTH: 23 1/2"
A B C D E F
S M L S M L
Black, Ivory
50% Rayon, 45% Polyester, 5% Spandex



SOIREE
2-TP-3038
LENGTH: 23 1/2"
A B C D E F
4 6 8 4 6 8
Black
100% Silk



APIARY
2-TP-2546
LENGTH: 24"
A B C D E F
4 6 8 10 12 2
Mayfly Olive, Golden Poppy, Persian Blue, Ivory, Black, Barbados Cherry
Self: 92% Silk, 8% Spandex. Combo: 44% Cotton, 36% Recycled Nylon, 14% Viscose, 6% Polyester



LONG BEACH
4-TP-3140
LENGTH: 24"
A B C D E F
4 6 8 10 2 2
Ancient Scroll, White
Shell: 100% Cotton. Combo: 39% Linen, 31% Cotton, 30% Nylon. Lining: 100% Cotton



TUSCANY-BLU
2-TP-2857
LENGTH: 24"
A B C D E F
M L S M L S
Strong Blue
95% Cotton, 5% Elastane



TUSCANY-DKBL
2-TP-3431
LENGTH: 24"
A B C D E F
M L S M L S
Nightshadow Blue
95% Cotton, 5% Elastane



TUSCANY-GRN
2-TP-3040
LENGTH: 24"
A B C D E F
XS XL S M XS XL
Mayfly Olive
95% Cotton, 5% Elastane



TUSCANY-ORG
2-TP-2773
LENGTH: 24"
A B C D E F
S M L S M L
Golden Poppy
95% Cotton, 5% Elastane



TUSCANY-PNK
2-TP-2821
LENGTH: 24"
A B C D E F
L S M L S M
Pink Flambe
95% Cotton, 5% Elastane



TUSCANY-RED
2-TP-3429
LENGTH: 24"
A B C D E F
S M L S M L
Faded Rose
95% Cotton, 5% Elastane



ISLANDER
2-TP-2917
LENGTH: 24 1/2"
A B C D E F
10 12 2 4 6 8
Barbados Cherry
92% Silk, 8% Spandex

C

CLASSIC

Generous fit through bust, waist, and hip. Hugs the contours of the body; styles with sleeves have a smaller shoulder and higher armhole.



SKY LOUNGE
4-TP-2752

LENGTH: 25"

A	B	C	D	E	F
6	8	10	12	2	4

Navy

Self: 100% Cotton, Camisole: 100% Cotton, Combo: 100% Cotton



CABO
2-TP-3168

LENGTH: 25 1/2"

A	B	C	D	E	F
2	4	6	8	10	12

White

98% Cotton, 2% Spandex



PASSERELLE
4-TP-2739

LENGTH: 25 1/2"

A	B	C	D	E	F
4	6	8	10	12	2

Navy, Ivory

51% Silk, 49% Viscose



KALAMATA
2-TP-2847

LENGTH: 26"

A	B	C	D	E	F
10	12	2	4	6	8

Serenity Blue, Strong Blue, Muted Barbados Cherry, Muted Mayfly Olive, Mayfly Olive, Antique Moss, Limesight, Mignon Yellow

94% Viscose, 6% Spandex



KAUAI
4-TP-2726

LENGTH: 26"

A	B	C	D	E	F
4	6	8	10	12	2

Navy, Ivory

42% Polyester, 42% Rayon, 16% Nylon



COURTLY
2-TP-3041

LENGTH: 26 1/4"

A	B	C	D	E	F
10	4	2	4	6	8

Powder Pink, Ivory, Washed Poppy, Barbados Cherry, Light Pink Flambe, Pink Flambe, Persian Blue, Strong Blue, Lettuce

77% Silk, 23% Metallic



SENSIBILITY
2-TP-2783

LENGTH: 26 1/4"

A	B	C	D	E	F
4	6	8	10	12	2

Light Ivory, Gold

100% Polyester



AEGIS-BLK
2-TP-1439

LENGTH: 26 1/2"

A	B	C	D	E	F
6	8	12	2	4	4

Black

100% Polyester



MINARET
2-TP-3043

LENGTH: 26 1/2"

A	B	C	D	E	F
2	4	6	8	10	6

Sugar Swizzle Ivory, Gold, Pink Flambe

Self: 100% Cotton, Combo: 98% Cotton, 2% Spandex



NORA
2-TP-103

LENGTH: 26 1/2"

A	B	C	D	E	F
4	6	12	2	4	6

White

98% Cotton, 2% Spandex



SUMMER PLACE
4-TP-3147

LENGTH: 26 1/2"

A	B	C	D	E	F
10	2	2	4	6	8

Off White, Sunburn, Coral Gold, Grey Green

Self: 55% Linen, 45% Cotton, Combo: 98 Cotton, 2% Spandex, Lining: 100% Cotton



TAHITI
4-TP-3138

LENGTH: 26 3/4"

A	B	C	D	E	F
8	10	6	2	4	6

Burnt Sienna, Ancient Scroll, Cashew, Faded Rose

92% Silk, 8% Spandex



ARECA
2-TP-2871

LENGTH: 26 3/4"

A	B	C	D	E	F
L	S	M	L	S	M

Mayfly Olive, White

Self: 93% Polyester, 7% Spandex, Combo: 54% Organic Cotton, 45% Lyocell, 1% Spandex



DEBUSSY
4-TP-2753

LENGTH: 27"

A	B	C	D	E	F
8	10	12	2	4	6

Navy, Cold Grey, Ivory

100% Cotton



TOPIARY
2-TP-2789

LENGTH: 27"

A	B	C	D	E	F
2	4	6	8	10	12

Ivory, Mayfly Olive, Golden Poppy, Cashew

97% Cotton, 3% Spandex



MAINSAIL
4-TP-2746

LENGTH: 27 1/2"

A	B	C	D	E	F
10	12	2	4	6	8

Ivory

Self: 51% Cotton, 49% Polyester, Combo: 100% Cotton



CANNES
4-TP-3116

LENGTH: 27 3/4"

A	B	C	D	E	F
8	10	12	2	4	6

White, Nightshadow Blue

100% Cotton



LOGANBERRY
2-TP-2806

LENGTH: 33"

A	B	C	D	E	F
2	4	6	8	10	12

Pink Flambe

92% Silk, 8% Spandex



POETESS
2-TP-2793

LENGTH: 33 1/2"

A	B	C	D	E	F
12	2	4	6	8	10

Ivory

Self: 100% Polyester, Combo: 97% Cotton, 3% Spandex

E

EASY

Relaxed fit through bust, waist, and hip. Some styles may even have a lot of gathers and fullness.



ANTIBES
4-TP-3144

LENGTH: 25"

A	B	C	D	E	F
6	8	10	12	2	4

Nightshadow Blue

100% Cotton



FOREVER
2-TP-2787

LENGTH: 25"

A	B	C	D	E	F
S	M	L	XS	S	M

White

Self: 48% Polyester, 25% Cotton, 27% Recycled Polyester, 2% Elastane, Combo: 60% Cotton, 40% Viscose



DOYENNE
2-TP-3738

LENGTH: 25 1/2"

A	B	C	D	E	F
4	6	8	10	2	2

Black

97% Cotton, 3% Spandex



CALLA LILY
2-TP-2840

LENGTH: 26"

A	B	C	D	E	F
10	12	2	4	6	8

Ivory

100% Lyocell



FRONTIER
2-TP-3049

LENGTH: 26"

A	B	C	D	E	F
2	4	6	8	10	4

Mulch, White

100% Linen



LUAU
2-TP-2981

LENGTH: 26"

A	B	C	D	E	F
2	4	6	8	10	4

Black, White, Serenity Blue

Self: 52% Linen, 46% Cotton, 2% Spandex, Combo: 97% Cotton, 3% Spandex



STRAIT
4-TP-2749

LENGTH: 26"

A	B	C	D	E	F
8	10	12	2	4	6

Indigo Washed

100% Lyocell



LOVE NOTE
2-TP-2794

LENGTH: 26 1/2"

A	B	C	D	E	F
6	8	10	12	2	4

Ivory

Self and Belt: 100% Silk



SOUTH BEACH
2-TP-3027

LENGTH: 26 1/2"

A	B	C	D	E	F
6	2	4	6	8	10

Black, White

Self: 92% Silk, 8% Spandex, Lining: 95% Polyester, 5% Spandex



GRENADINES
4-TP-2733

LENGTH: 27 1/2"

A	B	C	D	E	F
L	S	S	M	M	L

English Blue, Nightshadow Blue, Desert Rose, Ivory, Navy, Powder Pink, Burnt Sienna

51% Silk, 49% Viscose



ARECA
2-TP-2869

LENGTH: 28"

A	B	C	D	E	F
L	S	M	L	S	M

Mayfly Olive

93% Polyester, 7% Spandex



RED THISTLE
2-

E

EASY

Relaxed fit through bust, waist, and hip. Some styles may even have a lot of gathers and fullness.



FATHOM
4-TP-2741

LENGTH: 29 1/2"

A	B	C	D	E	F
4	6	8	10	12	2

Ivory, Navy

94% Polyester, 6% Spandex

CONTINUED

O

OVERSIZED

It is a very roomy, cozy style that is big overall.



NEPHELE
2-TP-2774

LENGTH: 31"

A	B	C	D	E	F
8	10	12	2	4	6

White

82% Cotton, 18% Silk

FIT

F

FITTED

Slim through bust, waist, and hip.

C

CLASSIC

Generous fit through bust, waist, and hip.

E

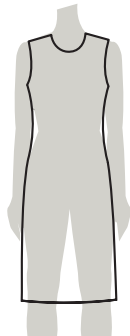
EASY

Relaxed fit through bust, waist, and hip.

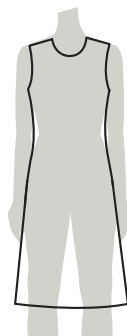
SILHOUETTES



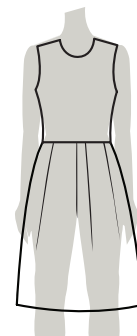
SHEATH



SHIFT



A-LINE



FIT & FLARE

ALL LENGTHS ARE MEASURED FROM THE HIGH POINT SHOULDER

F

FITTED

Slim through bust, waist, and hip.



WINDFLOWER
2-DR-2687

DRESS: 36" :SKIRT: 20"

UNLINED : A-LINE SHAPE

A	B	C	D	E	F

L	S	M	L	S	M

Barbados Cherry

52% Cotton, 43% Recycled Nylon, 4% Recycled Viscose, 1% Nylon



EXUBERANCE
2-DR-2685

DRESS: 40 1/2" :SKIRT: 24"

UNLINED : SHEATH SHAPE

A	B	C	D	E	F

S	M	L	S	M	L

Persian Blue, Mayfly Olive, Blue Atoll, Jelly Bean, Coral Bloss, Raspberry, Biscotti, Bamboo, Orchid, Golden Poppy

57% Cotton, 35% Recycled Nylon, 4% Recycled Polyester, 2% Viscose, 1% Modal, 1% Nylon



CARAVAN
2-DR-2702

DRESS: 42 1/2" :SKIRT: 26"

LINED : SHEATH SHAPE

A	B	C	D	E	F

S	M	S	M	S	M

Cashew

Shell: 36% Linen, 34% Cotton, 30% Nylon, Lining: 90% Modal, 10% Spandex

SF

SEMI FITTED

Follows the contours of the body through bust, waist, and hip.



SANDPIPER
4-DR-3117

DRESS: 36" :SKIRT: 19 1/2"

UNLINED : SHEATH SHAPE

A	B	C	D	E	F

M	S	M	S	M	S

Black, Ancient Scroll

39% Linen, 31% Cotton, 30% Nylon



WHITECAP
4-DR-2900

DRESS: 36 1/2" :SKIRT: 20 1/2"

UNLINED : SHEATH SHAPE

A	B	C	D	E	F

M	L	S	M	L	S

Navy, Ivory

79% Viscose, 21% Nylon



OLYMPIA
2-DR-2886

DRESS: 41" :SKIRT: 25"

LINED : SHEATH SHAPE

A	B	C	D	E	F

6	8	10	12	2	4
---	---	----	----	---	---

Ivory, Navy, Silver

100% Polyester



PERSUASION
2-DR-2772

DRESS: 53" :SKIRT: 37"

LINED : A-LINE SHAPE

A	B	C	D	E	F

12	2	4	6	8	10
----	---	---	---	---	----

Golden Poppy, Mayfly Olive, Mulch, Barbados Cherry, Red

97% Cotton, 3% Spandex

C

CLASSIC

Generous fit through bust, waist, and hip.



ESPALIER
2-DR-2842

DRESS: 34 1/2" :SKIRT: 22"

LINED : SHEATH SHAPE

A	B	C	D	E	F

12	2	4	6	8	10
----	---	---	---	---	----

Black

Self: 100% Polyester, Combo: 50% Nylon, 50% Polyurethane



EAST SEA
4-DR-2842

DRESS: 37" :SKIRT: 21"

UNLINED : SHIFT SHAPE

A	B	C	D	E	F

2	4	6	8	10	12
---	---	---	---	----	----

Indigo

85% Cotton, 15% Polyester



HAPPY PLACE
2-DR-2910

DRESS: 37" :SKIRT: 21"

UNLINED : SHIFT SHAPE

A	B	C	D	E	F

4	6	8	10	12	2
---	---	---	----	----	---

Marshmallow, Mayfly Olive, Black, Chocolate Plum, Barbados Cherry, Golden Poppy, Dark Purple, Light Navy

97% Cotton, 3% Spandex



ARIADNE
2-DR-2880

DRESS: 37 1/2" :SKIRT: 21 1/2"

LINED : SHIFT SHAPE

A	B	C	D	E	F

8	10	12	2	4	6
---	----	----	---	---	---

Strong Blue, Muted Yellow, Black, Ivory, Navy, Muted Red Orange, Muted Lush Meadow

Self: 100% Polyester, Combo: 98% Cotton, 2% Spandex



SURFSIDE
4-DR-3142

DRESS: 37 1/2" :SKIRT: 21 1/2"

UNLINED : SHIFT SHAPE

A	B	C	D	E	F

4	2	8	6	6	10
---	---	---	---	---	----

Ancient Scroll, Teak

60% Cotton, 40% Linen, Lining: 100% Cotton



AL FRESCO
2-DR-2817

DRESS: 38" :SKIRT: 21 1/2"

LINED : A-LINE SHAPE

A	B	C	D	E	F

8	10	12	2	4	6
---	----	----	---	---	---

Powder Pink, Marine Blue, White, Ivory, Pink Flame, Vibrant Green, Blue Atoll, Aqua Splash

Self: 100% Cotton, Lining: 100% Cotton, Belt Combo: 100% Polyester

DRESS GUIDE

C

CLASSIC

Generous fit through bust, waist, and hip.



BOXWOOD
2-DR-2813
DRESS: 38 1/2" :SKIRT: 20 1/2"
UNLINED : FIT & FLARE SHAPE
A B C D E F
10 12 2 4 6 8
Vibrant Green



DREAMSCAPE
2-DR-2792
DRESS: 39" :SKIRT: 22"
LINED : SHEATH SHAPE
A B C D E F
12 2 4 6 8 10
Metallic Gold, Ivory



SEA BREEZE
4-DR-2732
DRESS: 39" :SKIRT: 22"
SLIP : A-LINE SHAPE
A B C D E F
4 6 8 10 12 2
Navy
Self: 100% Polyester, Slip: 100% Cotton, Combo: 100% Cotton



ORACLE
2-DR-2909
DRESS: 39 1/2" :SKIRT: 22 1/2"
UNLINED : SHIFT SHAPE
A B C D E F
2 4 6 8 10 12
Twilight Navy, White
Self: 51% Cotton, 49% Lyocell, Lining: 100% Cotton



NEW MOON
2-DR-2822
DRESS: 40" :SKIRT: 24"
LINED : FIT & FLARE SHAPE
A B C D E F
10 12 2 4 6 8
Black, Ivory
Self: 55% Modal, 40% Polyester, 5% Spandex, Combo: 48% Cotton, 47% Polyester, 5% Spandex, Belt: 100% Genuine Leather



CONVERSATION
2-DR-2802
DRESS: 41" :SKIRT: 24 1/2"
LINED : SHEATH SHAPE
A B C D E F
10 12 2 4 6 8
Black, Pink Flambe, Vibrant Green, Golden Poppy, Blue Atoll
48% Recycled Polyester, 48% Viscose, 4% Elastane

CONTINUED



LUCIDITY
2-DR-3029
DRESS: 41" :SKIRT: 23"
LINED : SHEATH SHAPE
A B C D E F
8 10 12 2 4 6
Serenity Blue, Navy, White
63% Polyester, 27% Viscose, 7% Cotton, 3% Elastane



COSMOS
2-DR-2916
DRESS: 43" :SKIRT: 27"
LINED : SHEATH SHAPE
A B C D E F
6 8 10 12 2 4
Pink Flambe
96% Polyester, 4% Spandex



GODDESS
2-DR-2866
DRESS: 44" :SKIRT: 27"
LINED : A-LINE SHAPE
A B C D E F
2 4 6 8 10 12
White
97% Cotton, 3% Spandex



MEDEA
2-DR-2887
DRESS: 45" :SKIRT: 29"
LINED : FIT & FLARE SHAPE
A B C D E F
4 6 8 10 12 2
Black, White
Self: 92% Silk, 8% Spandex, Lining: 96% Polyester, 4% Spandex



MONTENEGRO
4-DR-3154
DRESS: 49" :SKIRT: 32 1/2"
UNLINED : A-LINE SHAPE
A B C D E F
6 8 10 10 2 4
Ivory, Ancient Scroll, Faded Rose, Gold, Coral Almond, Coral Gold, Warm Olive, Sunburn
99% Rayon, 1% Polyester



MOORISH
2-DR-3051
DRESS: 52" :SKIRT: 35 1/2"
LINED : A-LINE SHAPE
A B C D E F
8 10 8 2 4 6
Brilliant White, Persian Blue
97% Cotton, 3% Spandex



AUSTEN
2-DR-2550
DRESS: 53" :SKIRT: 37"
UNLINED : SHIFT SHAPE
A B C D E F
8 10 12 2 4 6
Ivory, Mayfly Olive, Golden Poppy, Antique Moss, Black, Vibrant Green
97% Cotton, 3% Spandex



BLACK LOTUS
2-DR-3037
DRESS: 57" :SKIRT: 37 1/2"
LINED : A-LINE SHAPE
A B C D E F
10 4 2 4 6 8
Black
100% Cotton



SOUK
2-DR-3045
DRESS: 60" :SKIRT: 43 1/2"
UNLINED : A-LINE SHAPE
A B C D E F
2 4 6 8 10 6
Sugar Swizzle Ivory, Mayfly Olive, Limelight, Pink Flambe, Powder Pink
100% Cotton

E

EASY

Relaxed fit through bust, waist, and hip.



NAUTICAL
4-DR-2724
DRESS: 36" :SKIRT: 19"
UNLINED : SHIFT SHAPE
A B C D E F
6 8 10 12 2 4
Navy
98% Nylon, 2% Spandex



BEACHCOMBER
4-DR-3114
DRESS: 38" :SKIRT: 21 1/2"
UNLINED : SHIFT SHAPE
A B C D E F
10 10 2 4 6 8
Ivory, Faded Rose, Ancient Scroll, Hot Sauce
Self: 63% Cotton, 14% Viscose, 20% Polyester, 3% Spandex, Combo: 97% Cotton, 3% Spandex



MALTESE
4-DR-2904
DRESS: 49" :SKIRT: 33"
SLIP : A-LINE SHAPE
A B C D E F
4 6 8 10 12 2
Egghell Blue, Blue Surf, Golden Palm, Persian Red, Sassafras, Paprika, Blazing Red, Ivory, Burnt Coral, Aqua Haze
100% Cotton



CHLORIS
2-DR-2868
DRESS: 52" :SKIRT: 35 1/2"
UNLINED : A-LINE SHAPE
A B C D E F
M M L S S M
Black, Muted Vibrant Green, Muted Golden Poppy, White, Muted Barbados Cherry, Muted Pink Flambe
100% Cotton



SENSATION
2-DR-3033
DRESS: 55" :SKIRT: 38 1/2"
UNLINED : A-LINE SHAPE
A B C D E F
S M S M S M
Vibrant Green, Lettuce Green, Pink Flambe, Mulch, Antique Moss
97% Cotton, 3% Spandex



CELESTIAL
2-DR-3031
DRESS: 60 1/2" :SKIRT: 42 1/2"
UNLINED : A-LINE SHAPE
A B C D E F
2 2 4 6 8 10
Navy, Serenity Blue, White, Persian Blue
100% Cotton

FIT

L

LEGGINGS

Follow body contours from waist through the leg opening.

S

SLIM

Slimmer through the hip and thigh.

SF

SEMI FITTED

Slightly slimmer through the hip and thigh.

C

CLASSIC

Straight through the hip and thigh.

E

EASY

Relaxed through the hip and thigh.

WAIST

N

NATURAL

Sits at the natural waistline.

R

REGULAR

Sits 1" below the natural waistline.

P

PITCHED

Sits 1-2" below the natural waistline.

L

LOW

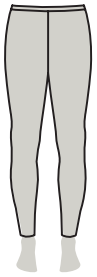
Sits 2" below the natural waistline.

H

HIGH

Sits above the natural waistline.

LEG



SKINNY

Tighter fit through thigh, knee, and leg opening.



SLIM

Slim through thigh, knee, and leg opening.



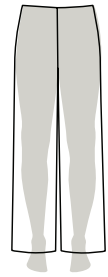
STRAIGHT

Straight through thigh, knee, and leg opening.



BOOTCUT

Straight or slim through thigh and knee, and wider at leg opening.



WIDE

Full fit through thigh, knee, and leg opening.

STYLE

EDIE LEGGINGS REGULAR WAIST

ALI SLIM FIT NATURAL WAIST

TWIGGY SLIM FIT LOW-RISE WAIST

AUDREY SEMI FITTED PITCHED WAIST

KATE CLASSIC FIT REGULAR WAIST

GRACE EASY FIT REGULAR WAIST

GRETA SEMI FITTED REGULAR WAIST

RITA CLASSIC FIT NATURAL WAIST

FARRAH EASY FIT REGULAR WAIST

PERFECT SLIM FIT LOW-RISE WAIST

BOYFRIEND EASY FIT LOW WAIST

GIRLFRIEND EASY FIT NATURAL WAIST

FLAWLESS FITTED REGULAR WAIST

FF fly front F flat SZ side zip PO pull-on LL lined UL unlined

ALI

Slim fit through waist & hips
Sits at natural waist.



SWIRL-IVR 4-PT-1223

INSEAM: 34" WIDE LEG
RISE: 10 1/2" FLY-FRONT
LEG: 22"

A	B	C	D	E	F
10	8	12	2	4	8

Sugar
97% Cotton, 3% Spandex

DIANA



ARECA 2-PT-2872

INSEAM: 30 1/2" TAPERED LEG
RISE: 10 1/4" FLY-FRONT
LEG: 15 1/2"

A	B	C	D	E	F
L	M	XS	M	XS	L

Mayfly Olive
93% Polyester, 7% Spandex

GLORIA



GULF STREAM 4-PT-3153

INSEAM: 26 3/4" WIDE LEG
RISE: 10 3/4" PULL-ON
LEG: 19"

A	B	C	D	E	F
S	M	S	M	S	M

Nightshadow Blue
51% Cotton, 34% Viscose,
15% Nylon

PANTS GUIDE

EDIE

Leggings Fit
Sits 1" below the natural waistline.



DRESSAGE-BLK

2-PT-650

INSEAM: 30"
RISE: 10"
LEG: 10"
SKINNY LEG FLY-FRONT

A	B	C	D	E	F
4	10	6	10	2	4

Black

70% Viscose, 26% Polyamide, 4% Spandex

DRESSAGE-NVY

2-PT-902

INSEAM: 30"
RISE: 10"
LEG: 10"
SKINNY LEG FLY-FRONT

A	B	C	D	E	F
6	10	8	2	4	6

Navy

70% Polyester, 26% Polyamide, 4% Spandex

GLAM-NVY

2-PT-2338

INSEAM: 30"
RISE: 11"
LEG: 11"
SKINNY LEG PULL-ON

A	B	C	D	E	F
6	6	6	10	12	2

Navy

100% Genuine Leather

FARRAH

Easy fit through waist & hips
Sits at natural waist.



IDYLL

2-PT-2831

INSEAM: 6"
RISE: 10 3/4"
LEG: 27 1/2"
A-LINE SHAPE SIDE ZIPPER

A	B	C	D	E	F
10	4	2	4	6	8

Black

100% Cotton

ANTIBES

4-PT-3145

INSEAM: 7"
RISE: 10 1/2"
LEG: 27"
WIDE LEG FLY-FRONT

A	B	C	D	E	F
2	4	6	8	10	2

Nightshadow Blue

100% Cotton

AUDREY

Semi fitted
Slim through hips & thigh
Pitched waist in front
Typically sits 2" below waist.



FRANKIE

2-PT-659

INSEAM: 27"
RISE: 9 3/4"
LEG: 13"
SLIM LEG SIDE ZIPPER

A	B	C	D	E	F
4	2	6	10	6	8

Punch

57% Cotton, 37% Viscose, 6% Spandex

HOLLYWOOD-BLK

2-PT-854

INSEAM: 27"
RISE: 9 3/4"
LEG: 13"
SLIM LEG SIDE ZIPPER

A	B	C	D	E	F
2	12				

Black

57% Cotton, 37% Viscose, 6% Spandex

HOLLYWOOD-GRY

2-PT-1432

INSEAM: 27"
RISE: 9 3/4"
LEG: 13"
SLIM LEG SIDE ZIPPER

A	B	C	D	E	F
8	4	4	6	8	10

Oyster Mushroom

57% Cotton, 37% Viscose, 6% Elastane

HOLLYWOOD-NVY

2-PT-853

INSEAM: 27"
RISE: 9 3/4"
LEG: 13"
SLIM LEG SIDE ZIPPER

A	B	C	D	E	F

Navy

57% Cotton, 37% Viscose, 6% Elastane

HOLLYWOOD-WHT

2-PT-850

INSEAM: 27"
RISE: 9 3/4"
LEG: 13"
SLIM LEG SIDE ZIPPER

A	B	C	D	E	F
		8	12	2	2

White

57% Cotton, 37% Viscose, 6% Spandex

LABYRINTH

2-PT-2870

INSEAM: 28"
RISE: 9 1/2"
LEG: 14"
SLIM LEG FLY-FRONT

A	B	C	D	E	F
10	12	2	4	6	8

Ivory, Black, Pink Flambe

97% Cotton, 3% Spandex

DREAMSCAPE

2-PT-2796

INSEAM: 30"
RISE: 9 1/2"
LEG: 13"
SLIM LEG SIDE ZIPPER

A	B	C	D	E	F
12	2	4	6	8	10

Metallic Gold, Ivory

65% Rayon, 20% Nylon, 10% Polyester, 5% Spandex

MYTHICAL

2-PT-2852

INSEAM: 30"
RISE: 9 1/2"
LEG: 13"
SLIM LEG FLY-FRONT

A	B	C	D	E	F
8	10	12	2	4	6

Navy, White

97% Cotton, 3% Spandex

CHATTERLEY

2-PT-2769

INSEAM: 33"
RISE: 9 1/2"
LEG: 16 1/4"
STRAIGHT LEG FLY-FRONT

A	B	C	D	E	F
2	4	6	8	10	12

Mayfly Olive

75% Rayon, 25% Polyester

CONVERSATION

2-PT-2800

INSEAM: 34"
RISE: 9 1/2"
LEG: 15"
STRAIGHT LEG FLY-FRONT

A	B	C	D	E	F
10	12	2	4	6	8

Black, Pink Flambe, Vibrant Green, Golden Poppy, Blue Atoll

48% Recycled Polyester, 48% Viscose, 4% Elastane

BASKERVILLE

2-PT-2883

INSEAM: 34"
RISE: 9 1/2"
LEG: 15"
STRAIGHT LEG FLY-FRONT

A	B	C	D	E	F
2	4	6	8	10	12

Brilliant White

98% Cotton, 2% Spandex

GRACE

Easy fit
Not pitched at waist
Sits 1" below waist.



CAPITOLA

4-PT-3141

INSEAM: 28"
RISE: 11"
LEG: 13 3/8"
STRAIGHT LEG PULL-ON

A	B	C	D	E	F
4	6	8	10	6	2

Ancient Scroll

90% Nylon, 10% Spandex

PASSAGE-BLK

2-PT-3638

INSEAM: 34"
RISE: 10 1/8"
LEG: 20 1/2"
WIDE LEG PULL-ON

A	B	C	D	E	F
S	M	S	M	S	M

Black

95% Cotton, 5% Elastane

PASSAGE-BLU

2-PT-3641

INSEAM: 34"
RISE: 10 1/8"
LEG: 20 1/2"
WIDE LEG PULL-ON

A	B	C	D	E	F
M	XS	L	S	L	XS

Serenity Blue

95% Cotton, 5% Elastane

PASSAGE-NVY

2-PT-3640

INSEAM: 34"
RISE: 10 1/8"
LEG: 20 1/2"
WIDE LEG PULL-ON

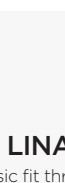
A	B	C	D	E	F
XS	S	M	XS	M	S

Navy

95% Cotton, 5% Elastane

RITA

Classic fit
Sits at the natural waist.



ARION

2-PT-2877

INSEAM: 34"
RISE: 10 1/4"
LEG: 17 1/2"
STRAIGHT LEG PULL-ON

A	B	C	D	E	F
10	12	2	4	6	8

Indigo, Black, Cava

66% Polyester, 33% Cotton, 1% Elastane

HIGHLIGHT

2-PT-3044

INSEAM: 34"
RISE: 10 1/4"
LEG: 16"
STRAIGHT LEG PULL-ON

A	B	C	D	E	F
4	6	8	10	8	14

Sugar Swizzle Ivory

96% Polyester, 4% Spandex

LINA

Classic fit through hip & thigh
Sits at the natural waist.

TRIESTE

4-PT-3151

INSEAM: 30"
RISE: 11 1/2"
LEG: 16"
STRAIGHT LEG FLY-FRONT

A	B	C	D	E	F
6	8	10	6	2	4

Faded Rose

53% Cotton, 45% Lyocell, 2% Spandex

SAND DOLLAR

4-PT-3100

INSEAM: 34"
RISE: 11"
LEG: 21"
BOOTCUT LEG FLY-FRONT

A	B	C	D	E	F
4	6	8	10	8	2

Ancient Scroll

97% Cotton, 3% Spandex

PANTS GUIDE

KATE

Classic fit
Regular waist
Typically sits 1" below waist.



CATAMARAN 2-PT-2780

INSEAM: 11"
RISE: 10 1/2"
LEG: 20"

STRAIGHT LEG
FLY-FRONT

A	B	C	D	E	F
8	10	8	2	4	6

White

97% Cotton, 3% Spandex



WESTBURY 2-PT-2804

INSEAM: 26"
RISE: 10 1/2"
LEG: 20"

WIDE LEG
FLY-FRONT

A	B	C	D	E	F
6	8	10	12	2	4

Black, Pink Flambe, Tobacco, Ivory

Self: 95% Cotton, 5% Elastane. Combo: 55% Cotton, 33% Polyester, 12% Elastane



RODEO DRIVE 2-PT-2977

INSEAM: 28"
RISE: 10 3/4"
LEG: 19"

SLIGHT BOOTCUT
SIDE ZIPPER

A	B	C	D	E	F
4	6	8	10	4	2

Cashew

90% Cotton, 7% Linen, 3% Polyurethane



CUNARD 4-PT-2734

INSEAM: 30"
RISE: 10 1/2"
LEG: 13"

SLIM LEG
SIDE ZIPPER

A	B	C	D	E	F
2	4	6	8	10	12

English Blue, Nightshade Blue, Ivory, Navy, Powder Pink, Faded Rose, Burnt Senna

94% Polyester, 6% Spandex



MARITIME 2-PT-2850

INSEAM: 30"
RISE: 10 1/2"
LEG: 15"

STRAIGHT LEG
SIDE ZIPPER

A	B	C	D	E	F
6	8	10	12	2	4

Navy

Self: 69% Polyester, 27 Rayon, 9% Spandex. Lining: 100% Polyester



AGORA 2-PT-2848

INSEAM: 34"
RISE: 10 1/2"
LEG: 19 1/2"

BOOTCUT LEG
SIDE ZIPPER

A	B	C	D	E	F
8	10	12	2	4	6

White

69% Polyester, 22% Rayon, 9% Spandex



ARBORETUM 2-PT-2816

INSEAM: 34"
RISE: 10 1/2"
LEG: 18"

STRAIGHT LEG
SIDE ZIPPER

A	B	C	D	E	F
8	10	12	2	4	6

Blue Atoll, Serenity Blue, Muted Navy, Muted Vibrant Green

78% Rayon, 22% Polyester



BRANDY HALL 2-PT-2784

INSEAM: 34"
RISE: 10 3/4"
LEG: 18"

STRAIGHT LEG
FLY-FRONT

A	B	C	D	E	F
6	8	10	12	2	4

Cashew

69% Polyester, 30% Viscose, 1% Elastane



CASABLANCA 2-PT-2975

INSEAM: 34"
RISE: 10 3/4"
LEG: 20"

WIDE BOOTCUT
SIDE ZIPPER

A	B	C	D	E	F
2	4	6	8	10	2

Sugar Swizzle Ivory

90% Cotton, 7% Linen, 3% Polyurethane



CROQUET 2-PT-2547

INSEAM: 34"
RISE: 10 1/2"
LEG: 20"

WIDE LEG
FLY-FRONT

A	B	C	D	E	F
8	10	12	2	4	6

Ivory, Mayfly Olive, Golden Pospay, Antique Moss, Black, Vibrant Green

23% Cotton, 26% Linen, 1% Spandex



FATHOM 4-PT-2742

INSEAM: 34"
RISE: 10 1/2"
LEG: 27 1/4"

ULTRA-WIDE LEG
SIDE ZIPPER

A	B	C	D	E	F
8	10	12	2	4	6

Ivory, Navy

94% Polyester, 6% Spandex



KAUI 2-PT-2954

INSEAM: 34"
RISE: 10 3/4"
LEG: 25 1/2"

ULTRA-WIDE LEG
SIDE ZIPPER

A	B	C	D	E	F
4	6	8	10	12	2

Navy, Ivory

42% Polyester, 42% Rayon, 16% Nylon



LOGGIA 2-PT-2865

INSEAM: 34"
RISE: 10 1/2"
LEG: 19 1/2"

WIDE LEG
FLY-FRONT

A	B	C	D	E	F
4	6	8	10	12	2

Black

Self: 71% Polyester, 21% Viscose, 8% Spandex. Lining: 100% Polyester



MANDERLEY 2-PT-2777

INSEAM: 34"
RISE: 10 1/2"
LEG: 19"

WIDE LEG
FLY-FRONT

A	B	C	D	E	F
2	4	6	8	10	12

Mayfly Olive

Self: 98% Cotton, 2% Spandex. Combo: 100% Polyester. Lining: 100% Polyester



MODISH 2-PT-3167

INSEAM: 34"
RISE: 10 1/2"
LEG: 18"

STRAIGHT LEG
SIDE ZIPPER

A	B	C	D	E	F
10	10	2	4	6	8

Black

98% Cotton, 2% Elastane



QUEEN'S CUP 2-PT-994

INSEAM: 34"
RISE: 10 1/2"
LEG: 20"

WIDE LEG
FLY-FRONT

A	B	C	D	E	F
4	6	2	8	8	4

Sugar

97% Cotton, 3% Spandex



RANUNCULUS 2-PT-2838

INSEAM: 34"
RISE: 10 1/2"
LEG: 17"

STRAIGHT LEG
SIDE ZIPPER

A	B	C	D	E	F
12	2	4	6	8	10

Black, Nude

Self: 100% Polyester. Lining: 100% Polyester



VALIANT 2-PT-3028

INSEAM: 34"
RISE: 10 1/2"
LEG: 19"

STRAIGHT LEG
FLY-FRONT

A	B	C	D	E	F
12	2	4	6	8	10

Brilliant White

97% Cotton, 3% Spandex

SALMA

Slim fit
Regular waist
Sits at the natural waist.



DASHWOOD-BLU 2-PT-2779

INSEAM: 30"
RISE: 10 1/2"
LEG: 18"

SKINNY LEG
FLY-FRONT

A	B	C	D	E	F
4	6	8	10	12	2

Persian Blue

Shell: 78% Cotton, 20% Polyester, 2% Spandex. Lining: 100% Polyester



DASHWOOD-IVR 2-PT-2788

INSEAM: 30"
RISE: 10 1/2"
LEG: 11"

SKINNY LEG
FLY-FRONT

A	B	C	D	E	F
2	4	6	8	10	12

Ivory

Shell: 78% Cotton, 20% Polyester, 2% Spandex. Lining: 100% Polyester



HESPERIDES 2-PT-2858

INSEAM: 34"
RISE: 10 1/2"
LEG: 19 1/2"

BOOTCUT LEG
FLY-FRONT

A	B	C	D	E	F
10	12	2	4	6	8

Strong Blue, White, Navy

Shell: 97% Cotton, 3% Spandex. Lining: 100% Polyester



SPICE 2-PT-3103

INSEAM: 34"
RISE: 10 1/2"
LEG: 19 1/2"

BOOTCUT LEG
FLY-FRONT

A	B	C	D	E	F
6	8	10	10	2	4

Pink Flambe, Powder Pink, Persian Blue, Brilliant White, Sugar Swizzle Ivory

97% Cotton, 3% Spandex

TWIGGY

Slim fit through hip & thigh
Sits 2" below natural waist.



SOUTHAMPTON 4-PT-2728

INSEAM: 30"
RISE: 9 1/2"
LEG: 11"

SKINNY LEG
FLY-FRONT

A	B	C	D	E	F
12	2	4	6	8	10

Indigo, Ivory

74% Rayon, 22% Nylon, 4% Spandex



WANDERLUST-BLK 2-PT-872

INSEAM: 30"
RISE: 10 1/2"
LEG: 11"

SLIM LEG
FLY-FRONT

A	B	C	D	E	F
			4		12

Black

98% Cotton, 2% Spandex



WANDERLUST-IVR 2-PT-306

INSEAM: 31"
RISE: 10 1/2"
LEG: 11"

SLIM LEG
FLY-FRONT

A	B	C	D	E	F
6	10	4		12	

Ivory

98% Cotton, 2% Spandex



WANDERLUST-WHT 2-PT-874

INSEAM: 31"
RISE: 10 1/2"
LEG: 11"

SLIM LEG
FLY-FRONT

A	B	C	D	E	F
12	4	10	8	6	2

White

98% Cotton, 2% Spandex

SKIRTS GUIDE

FIT

F

FITTED

Slim fit through hip and thigh.

C

CLASSIC

Generous fit through hip and thigh.

E

EASY

Relaxed fit through hip and thigh.

WAIST

N

NATURAL

Sits at the natural waistline.

R

REGULAR

Sits 1" below the natural waistline.

L

LOW

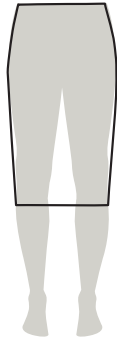
Sits 2" below the natural waistline.

H

HIGH

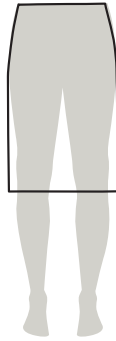
Sits above the natural waistline.

SILHOUETTE



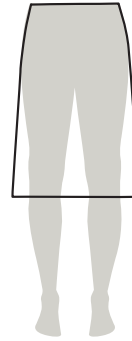
PENCIL

Skirt has a narrow fit through hip and thigh. Hem opening is narrower than thigh.



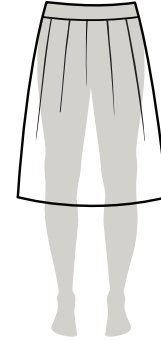
STRAIGHT

Skirt follows contours from waist to hipline, then hangs straight to the hem.



A-LINE

Skirt follows contours from waist to hipline, then gradually widens towards the hem.



FIT & FLARE

Skirt has a generous fit through low hip and thigh. Hem opening is wider than thigh.

The location of the top of the skirt (waist) affects where the bottom of the skirt hits the leg. Most of our skirts are Regular Waist, hitting 1" below the natural waist, but some seasons we offer some skirts at the natural waist or above that are listed as High-Waisted. It is important to note that skirt lengths are always given from the top of the waistband—thus a skirt that is 22" Regular Waist and a skirt that is 23"-24" High-Waisted could possibly end at the same point on the leg.

F

FITTED

Slim fit through hip and thigh.



SURGING

4-SK-2902

LENGTH: 22 1/4" **N**

STRAIGHT SHAPE

A B C D E F

S M L S M L

Navy, Ivory

88% Cotton, 12% Nylon



TRACERY

2-SK-4386

LENGTH: 35 1/2" **N**

FIT & FLARE SHAPE

A B C D E F

L M S M L S

Brilliant White

Self: 60% Cotton, 40% Polyester. Lining: 100% Polyester

C
CLASSIC
 Generous fit
 through hip and
 thigh.



BERBER
 2-SK-3050
 LENGTH: 19"
 PENCIL SHAPE (R)

A	B	C	D	E	F
4	6	8	4	6	8

 Mulch
 96% Cotton, 4% Spandex



MARSEILLE
 4-SK-2720
 LENGTH: 19"
 A-LINE SHAPE (R)

A	B	C	D	E	F
4	6	8	10	12	2

 Indigo, Ivory
 90% Cotton, 10% Polyester



CHATSWORTH
 2-SK-2781
 LENGTH: 20"
 A-LINE SHAPE (R)

A	B	C	D	E	F
12	2	4	6	8	10

 Persian Blue, Golden Poppy, Mayfly Olive,
 Vibrant Green, White, Læranium, Cashew,
 Pink Flambe
 95% Polyester, 5% Spandex



TENTURA
 2-SK-2879
 LENGTH: 20"
 A-LINE SHAPE (R)

A	B	C	D	E	F
8	10	12	2	4	6

 Barbados Cherry
 Self: 100% Polyester, Combo:
 92% Silk, 8% Spandex



OASIS
 2-SK-3046
 LENGTH: 21"
 SLIGHT A-LINE SHAPE (R)

A	B	C	D	E	F
8	10	12	8	10	12

 Sugar Swizzle Ivory, LimeLight, Golden
 Poppy, Pink Flambe, Barbados Cherry,
 Powder Pink, Vibrant Green, Persian Blue
 97% Cotton, 3% Spandex



BAYBERRY
 2-SK-2809
 LENGTH: 24"
 PENCIL SHAPE (N)

A	B	C	D	E	F
6	8	10	12	2	4

 Pink Flambe
 100% Polyester



FRONDE
 2-SK-3039
 LENGTH: 25"
 PENCIL SHAPE (N)

A	B	C	D	E	F
M	L	S	M	L	S

 Persian Blue, Brilliant White, Navy,
 Strong Blue Heathered
 30% Organic Cotton, 28% cotton,
 19% Lyocell, 13% Recycled Nylon,
 5% Linen, 3% Recycled Polyester,
 2% Other Fibers



RANUNCULUS
 2-SK-2837
 LENGTH: 25"
 PENCIL SHAPE (N)

A	B	C	D	E	F
10	12	2	4	6	8

 Black, Nude
 Self: 100% Polyester, Lining:
 100% Polyester



TAHITI
 4-SK-3139
 LENGTH: 25 1/4"
 PENCIL SHAPE (N)

A	B	C	D	E	F
2	4	6	2	4	6

 Burnt Sienna, Ancient Scroll,
 Cashew, Faded Rose
 92% Silk, 8% Spandex



MYKONOS
 2-SK-2914
 LENGTH: 34"
 A-LINE SHAPE (N)

A	B	C	D	E	F
S	M	L	S	M	L

 Strong Blue, White, Navy, Antique
 Moss
 97% Cotton, 3% Spandex



PANSIES
 2-SK-2832
 LENGTH: 34"
 A-LINE SHAPE (N)

A	B	C	D	E	F
L	M	S	L	M	S

 Black, Ivory
 97% Cotton, 3% Spandex

