

LIVING *Large*

2-DR-3037 BLACK LOTUS



2-JK-2882 BASKERVILLE
2-TP-3168 CABO
2-PT-2883 BASKERVILLE

BASKERVILLE

The closer you get, the more incredible these contemporary set gets. It's an unconventional suit, and that's what we like about it. The houndstooth damask jacquard enriches both pieces. The addition of black stripes lends graphic interest to the jacket.

ELEGANT SUMMER



CALLIOPE
SOIREE
MODISH

2-JK-3036
2-TP-3038
2-PT-3167



FREEPORT
PASSAGE-BLK

2-KN-2680
2-PT-3638



CALLIOPE
SOUTH BEACH

2-JK-3036
2-TP-3027

MONO-CHROMATIC GRAPHIC

Nothing transcends the seasons quite like these graphic neutrals. Ultra-flattering black meets pops of crisp white in modern summer stripes. For a dressed up look, pair the silk striped blouse with a dramatic tulle jacket and shimmering coated cotton cigarette pants. For something effortless, pair with our new full-length black lounge pants.



SOUTH BEACH
LOGGIA

2-TP-3027
2-PT-2865

SERENE CHIC



LUAU
PASSAGE-BLU
2-TP-2981
2-PT-3641

PACIFIC BLOOMS

Escape to an idyllic Pacific island in a look that conveys laid back luxury. The placed print of frothy hollyhock blossoms is reminiscent of the quintessential lei. The relaxing shade, aptly named Serenity blue, repeats from the blouse to the lounge pants to create a beautiful column of color.



GRANDIFLORA
LAGUNA-BLU
PASSAGE-BLU
2-KN-2674
4-TP-3417
2-PT-3641



GRANDIFLORA
CABO
CATAMARAN
2-KN-2674
2-TP-3168
2-PT-3580

A calming shade of blue, featuring a floral instarsia, makes this heathered jersey cardigan a go-to, whether you're relaxing or running around town. It's the perfect cozy layer that combines luxe lounging and monochromatic dressing with ease when you style it with our lounge pants and easy tank in the same hue. It completes the preppy-chic look when paired with crisp whites.

REFINED ELEGANCE



LUCIDITY

2-DR-3029



LALLA
LAGUNA-WHT
TRACERY

2-JK-3047
4-TP-3155
2-SK-4386

NEXT LEVEL DENIM

An elevated take on the denim jacket, thoughtful stitching and beautiful tailoring reimagine this wardrobe mainstay. It adds a polish and structure to the easy bohemian vibe of this lace-look knit skirt. It also completes the elevated casual look of a navy and white, Moroccan tile printed blouse and easy white cargo pants.



LALLA
LAGUNA-WHT
TRACERY

2-JK-3047
4-TP-3155
2-SK-4386



LALLA
TANGIER
VALIANT

2-JK-3047
2-TP-2855
2-PT-3028

TIERED FASHION



FREE TIME
LAGUNA-NVY
FROND

2-TP-2979
4-TP-3412
2-SK-3039

PUT A BOW ON IT

Easily one of our favorite summer dresses. The varied scales of this moorish tile print combined with crisp white and Persian blue for what can only be described as the perfect summer dress. Wear it solo and make the tie at the back a big bow for a one-piece wonder. Or, layer on a sweet cropped cardi for chillier summer nights.



MOORISH

2-DR-3051



MOORISH
SANTORINI-CARDI

2-DR-3051
2-KN-2664



DOYENNE
IDYLL

2-TP-3738
2-PT-2831

TRANSCENDENT NEUTRALS



POLARIS
IDYLL

2-KN-2666
2-PT-2831

Looks you'll wear this summer and the next (and the next). These all-black ensembles enjoy the longevity of neutrals, and deliver on the details. The airy cotton eyelet skirt is a darling run around piece that will be on repeat every summer. Opt to pair it with a stretch cotton blouse, a cool knit tank, or any of your favorite statement blouses.

CELESTIAL



CELESTIAL

2-DR-3031



ATLAS
ARECA

2-KN-2768
2-PT-2872

MOROCCAN *Medley*



TEXTURED COMFORT

ARECA
ARECA
ARECA

2-TP-2869
2-TP-2871
2-PT-2872

THINK PINK

From the saturated Pink Flambe to the sun-washed faded rose, these shades of pink lend feminine flair to quintessential summer whites. The faded rose denim jeans are easily dressed up or down. Try an open-work hoodie to add modern edge to a layered summer look. Or, go for a classic preppy vibe with a polo knit. An ombré intarsia technique graduates from pink to white for a seamless summer ensemble.



PRETTY KNITS



TAJINE
CARAVAN

2-KN-2978
2-DR-2702



Unexpectedly alluring linen-blend knits come in a universally flattering cashew beige. Thoughtfully placed stitching accentuates all the right curves, while side godets lend drama to a dress that wows from every angle. The cropped cardigan complements the silhouette with ease.



SABRINA
BRANDY HALL
2-KN-2701
2-PT-2784



ANDROS
RODEO DRIVE
2-KN-2690
2-PT-2977

SUBTLE VS SPARKLE



COURTLY
HIGHLIGHT

2-TP-3041
2-PT-3044

Top off easy trousers with tops that define the attitude of the ensemble. An easy knit top meets classic trousers for a simple yet savvy work wear look. A breezy geometric knit top pairs with cropped trousers in a look that proves elegance is simplicity. Pair crisp white pants with a date night worthy silk blouse that combines bold multi-sized Moroccan paisley with touches of gold and silver for a dose of everyday glamour.



MOROCCAN BREEZE

2-DR-3045



2-TP-3049
2-PT-4362
FRONTIER
BERBER



2-KN-2770
2-PT-4362
PAGEANTRY
BERBER

SUMMER SAFARI

A relaxed pair of sarafi-inspired shorts delivers effortless cool that will have you wearing them all summer long. The earthy brown hue is the season's new neutral that goes with just about everything. Our favorite ways to wear it: a sporty jersey top with stylish side stripes or an easy linen camp shirt boasting multi-directional stripes.

STATEMENT SKIRT



TUSCANY-RED
BERBER

2-TP-3429
2-SK-3050



LAGUNA-BLU
OASIS

4-TP-3417
2-SK-3046

A tale of two run-around skirts. One a solid-hued jean skirt featuring a hem adorned with Moroccan tassels. The other, a whimsical foliage print that features ten colors found in the collection. Best paired with solid hues — let these styles make a statement.

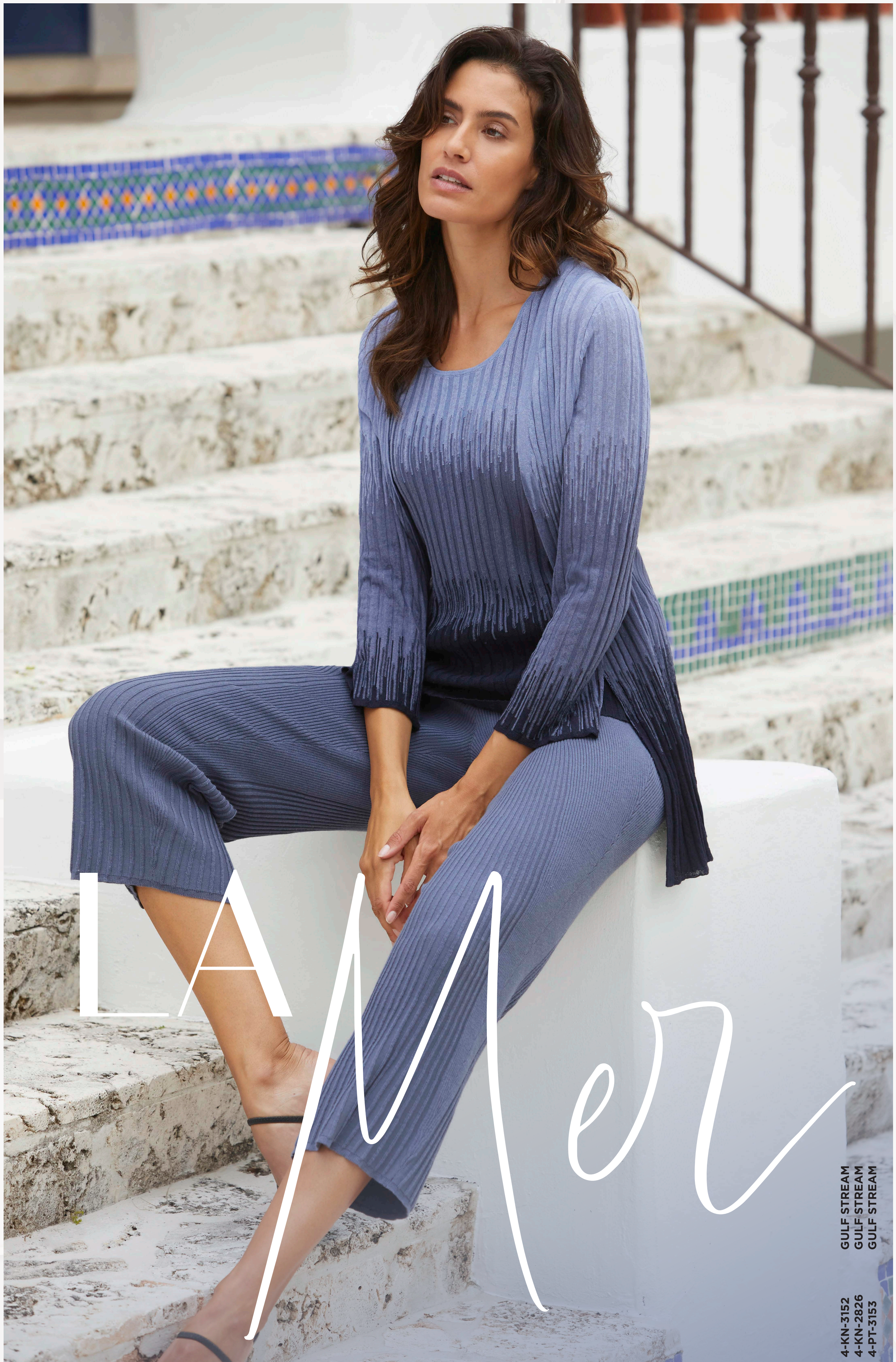


FREE TIME
MALIBU
SPICE

2-TP-2979
4-KN-3156
2-PT-3103

We love a good pair of printed jeans and the stunning Moroccan inspired tile print is enigmatic and cool. Four different patterns make the details of this print a revelation. We love it paired with an easy jersey knit linen-blend tank in a rich rosy shade and a solid white linen tunic styled open.

OASIS OF PINK



4-KN-3152
4-KN-2826
4-PT-3153

GULF STREAM
GULF STREAM
GULF STREAM

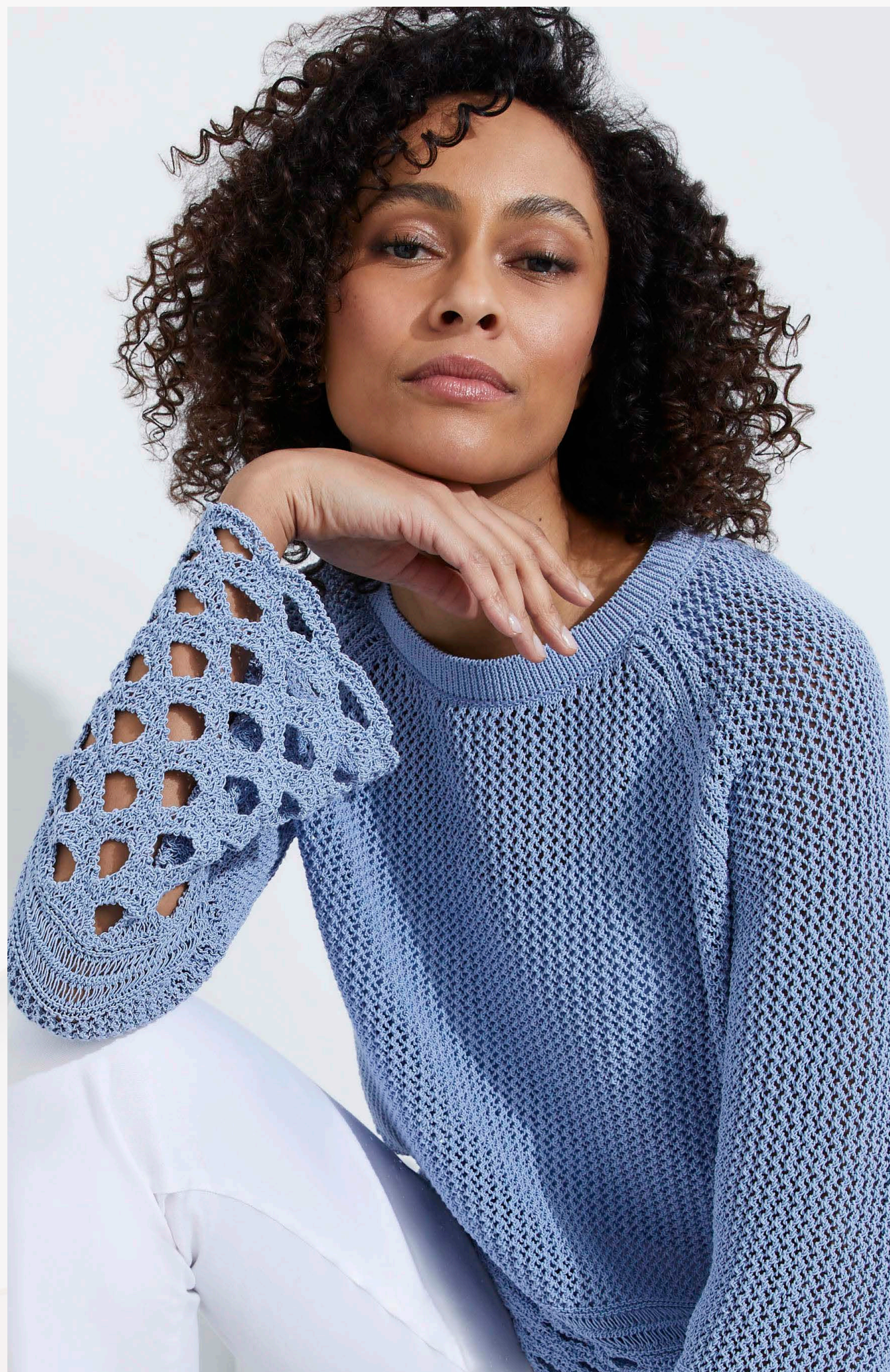
BLUE ESCAPE

Add these two pieces to your summer must-pack list. The cloud-soft cotton gauze fabric, in sophisticated nightshadow blue, channels the relaxed and blissful vibe that comes with a great vacation. The easy silhouettes are perfect for your next seaside escape.



4-TP-3144
4-PT-3145

ANTIBES
ANTIBES



CROCHET ELEGANCE

A glamorous summer statement top that delivers drama in the details. The smooth corded yarn, in a pale English blue hue, mixes stitches thoughtfully. The oversized scalloped mesh evokes a mermaid-core aesthetic we can't get enough of. Complete the look with our straight legged jeans in a lyocell-softened stretch cotton twill.



RIVIERA
FIRST MATE

4-KN-2903
4-PT-2963

GRAPHIC CHARM



SANDPIPER

4-DR-3117



Make a stylish graphic impression in this knit sheath dress with impressive luxury details in black and ancient scroll beige. This complex jacquard features stripes in pointelle, transfer, reverse jersey, racking, and tuck stitches. Its posh, linen-blend tape yarn affords breezy versatile wear in a host of different contexts. It is a fun look for date night and an easy office option.



4-KN-2824
4-PT-3141
SEA CAMPION
CAPITOLA



SEA CAMPION
BERBER
4-KN-2824
2-PT-4362

The season's must-have neutral — Ancient Scroll beige is a sandy, ultra-flattering hue. An intricately stitched knit linen top, in ancient scroll, features oversized florals that elevate any ensemble with ease. Wear the hue from head-to-toe when you pair the top with cool cargo pants. Or, opt to pair it with this summer's pair of wear-with-everything safari-inspired shorts.

SANDS OF STYLE



COASTAL SERENITY

SEA CAMPION
MALIBU
CAPITOLA

4-KN-2824
4-KN-3156
4-PT-3141



MOROCCAN MOSAIC

MINARET
LAGUNA-WHT
TRIESTE

2-TP-3043
4-TP-3155
4-PT-3151



Suiting doesn't have to be simple. This impeccably tailored beige suit gets a touch of artistic attitude with intricate crochet insets on the sides of the jacket. Style them with an enamored cotton voile blouse, featuring stylized floral embroidery in pink flambe and metallic gold sequins.

SAND DOLLAR
MINARET
SAND DOLLAR

4-JK-2976
2-TP-3043
4-PT-3100

MOROCCAN ARTISTRY

ROMANTIC ROSE



MONACO
SURFSIDE

4-JK-3115
4-DR-3142



Delight in the romantic floral trend with this shift dress, boasting a subtle cabbage rose damask in beige and teal. Perfect for weekend brunch or casual dates, the only accessory this flawless little summer dress needs is a fresh summer tan. Complete the look with a cotton crochet mesh jacket featuring cosmos-flower embroidery.



RIPPLES
LAGUNA-BGE
SAND DOLLAR
CLARITY

4-KN-2896
4-TP-3415
4-PT-3100
2-SC-2973



CORSICAN
VALIANT
CLARITY

4-KN-3317
2-PT-3028
2-SC-2973

BEIGE BLISS

Elevate your summer with ancient scroll beige tones. A portrait-neck tank and linen-blend cardi offer deluxe textures, while wide-leg pants delivers a polished look with ease. Mix neutrals with ease when you pair crisp white cargo pants with an ancient scroll beige asymmetrical knit. Finish the looks with pops of color from a silky scarf.



TROUVILLE
CAPITOLA

4-KN-2747
4-PT-3141



LAGUNA-ORN
TAHITI

4-TP-3416
4-SK-3139

COOL CORALS

From burnt sienna to faded rose, rich shades of coral capture the hues from a desert sunset in contemporary designs. Dress them up and down effortlessly — pair them with a silky sarong wrap skirt, cargo pants, and printed jeans.



MALIBU
SPICE

4-KN-3156
2-PT-3103



TAHITI
TAHITI

4-TP-3138
4-SK-3139